

For Research Use Only

ERC1 Monoclonal antibody

Catalog Number: 66681-1-Ig **1 Publications**



Basic Information

| | | |
|--|---|---|
| Catalog Number: 66681-1-Ig | GenBank Accession Number: BC132782 | Purification Method: Protein G purification |
| Size: 150ul , Concentration: 1200 ug/ml by Nanodrop and 1000 ug/ml by Bradford method using BSA as the standard; | GeneID (NCBI): 23085 | CloneNo.: 2A5B9 |
| Source: Mouse | UNIPROT ID: Q8IUD2 | Recommended Dilutions: WB 1:5000-1:50000 |
| Isotype: IgG1 | Full Name: ELKS/RAB6-interacting/CAST family member 1 | |
| Immunogen Catalog Number: AG17665 | Calculated MW: 1116 aa, 128 kDa | |
| | Observed MW: 135 kDa | |

Applications

| | |
|--|---|
| Tested Applications: WB, ELISA | Positive Controls: WB : HeLa cells, HEK-293 cells, HepG2 cells, Jurkat cells, HSC-T6, NIH/3T3 cells |
| Cited Applications: WB | |
| Species Specificity: Human, Mouse, Rat | |
| Cited Species: canine | |

Background Information

ERC is an acronym based on previous separate namings of members of this protein family, ELKS, Rab6IP2 and CAST (PMID: 12391317). They are known to bind RIMs, the active zone proteins that regulate neurotransmitter release. ERC1 (ELKS) is an essential regulatory subunit of the IKK complex and likely functions by recruiting Ikbα to the complex (PMID: 15218148). Multiple isoforms of ERC1 mRNA are generated by alternative splicing (PMID: 12203787). There are two known splice variants of ERC1 protein that differ at their C termini, ERC1a and ERC1b. ERC1a is ubiquitously expressed, whereas ERC1b is brain-specific (PMID: 12391317; 12923177).

Notable Publications

| Author | Pubmed ID | Journal | Application |
|------------|-----------|----------------------------|-------------|
| Yuta Homma | 34023780 | Biochem Biophys Res Commun | WB |

Storage

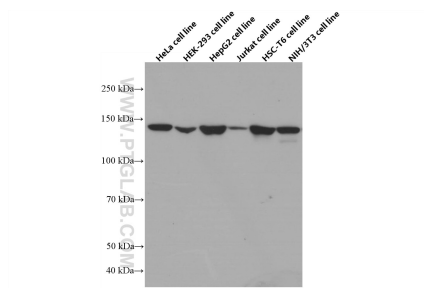
Storage:
Store at -20°C. Stable for one year after shipment.
Storage Buffer:
PBS with 0.02% sodium azide and 50% glycerol pH 7.3.
Aliquoting is unnecessary for -20°C storage

***** 20ul sizes contain 0.1% BSA**

For technical support and original validation data for this product please contact:
T: 1 (888) 4PTGLAB (1-888-478-4522) (toll free in USA), or 1(312) 455-8498 (outside USA)
E: proteintech@ptglab.com
W: ptglab.com

This product is exclusively available under Proteintech Group brand and is not available to purchase from any other manufacturer.

Selected Validation Data



Various lysates were subjected to SDS PAGE followed by western blot with 66681-1-Ig (ERC1 antibody) at dilution of 1:10000 incubated at room temperature for 1.5 hours.