

For Research Use Only

BTC Monoclonal antibody

Catalog Number: 66683-1-Ig **2 Publications**



Basic Information

Catalog Number: 66683-1-Ig	GenBank Accession Number: BC011618	Purification Method: Protein G purification
Size: 150ul , Concentration: 2300 µg/ml by Nanodrop and 1000 µg/ml by Bradford method using BSA as the standard;	GeneID (NCBI): 685	CloneNo.: 2H5E8
Source: Mouse	Full Name: betacellulin	Recommended Dilutions: WB 1:5000-1:10000
Isotype: IgG1	Calculated MW: 20 kDa	
Immunogen Catalog Number: AG26724	Observed MW: 20 kDa	

Applications

Tested Applications: WB, ELISA	Positive Controls: WB : MCF-7 cells, NCCIT cells, A549 cells, MDA-MB-231 cells, T-47D cells, PC-3 cells, BxPC-3 cells, DU 145 cells
Cited Applications: IHC, WB	
Species Specificity: Human	
Cited Species: human	

Background Information

Betacellulin (BTC), a member of the epidermal growth factor (EGF) family, binds and activates ErbB1 and ErbB4 homodimers. BTC is synthesized primarily as a transmembrane precursor, which is then processed to mature molecule by proteolytic events. This protein is a ligand for the EGF receptor. BTC was expressed in tumors and involved in tumor growth progression.

Notable Publications

Author	Pubmed ID	Journal	Application
Ting Shen	35846125	Front Genet	WB,IHC
Yingjian Huang	34358528	J Invest Dermatol	WB

Storage

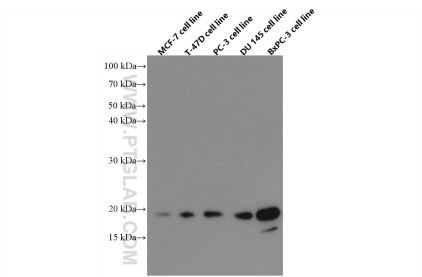
Storage:
Store at -20°C. Stable for one year after shipment.
Storage Buffer:
PBS with 0.02% sodium azide and 50% glycerol pH 7.3.
Aliquoting is unnecessary for -20°C storage

*** 20ul sizes contain 0.1% BSA

For technical support and original validation data for this product please contact:
T: 1 (888) 4PTGLAB (1-888-478-4522) (toll free in USA), or 1(312) 455-8498 (outside USA)
E: proteintech@ptglab.com
W: ptglab.com

This product is exclusively available under Proteintech Group brand and is not available to purchase from any other manufacturer.

Selected Validation Data



Various lysates were subjected to SDS PAGE followed by western blot with 66683-1-Ig (BTC antibody) at dilution of 1:10000 incubated at room temperature for 1.5 hours.