

For Research Use Only

# Cytokeratin 6A Monoclonal antibody



Catalog Number: 66685-1-Ig **2 Publications**

## Basic Information

<b>Catalog Number:</b> 66685-1-Ig	<b>GenBank Accession Number:</b> BC008807	<b>Purification Method:</b> Protein G purification
<b>Size:</b> 150ul , Concentration: 1100 µg/ml by Nanodrop and 1000 µg/ml by Bradford method using BSA as the standard;	<b>GeneID (NCBI):</b> 3853	<b>CloneNo.:</b> 2H6A11
<b>Source:</b> Mouse	<b>Full Name:</b> keratin 6A	<b>Recommended Dilutions:</b> WB 1:20000-1:100000 IHC 1:1000-1:2000
<b>Isotype:</b> IgG1	<b>Calculated MW:</b> 60 kDa	
<b>Immunogen Catalog Number:</b> AG0882	<b>Observed MW:</b> 60 kDa	

## Applications

<b>Tested Applications:</b> IHC, WB, ELISA	<b>Positive Controls:</b> WB : A431 cells, IHC : human cervical cancer tissue,
<b>Cited Applications:</b> IF, IHC	
<b>Species Specificity:</b> Human	
<b>Cited Species:</b> human, mouse	

**Note-IHC: suggested antigen retrieval with TE buffer pH 9.0; (\*) Alternatively, antigen retrieval may be performed with citrate buffer pH 6.0**

## Background Information

Keratins are a large family of proteins that form the intermediate filament cytoskeleton of epithelial cells, which are classified into two major sequence types. Type I keratins are a group of acidic intermediate filament proteins, including K9-K23, and the hair keratins Ha1-Ha8. Type II keratins are the basic or neutral counterparts to the acidic type I keratins, including K1-K8, and the hair keratins, Hb1-Hb6. Keratin 6 is a type II keratin. It is used as marker for epidermal hyperproliferation and differentiation. There are three keratin 6 isoforms: keratin 6A, 6B and 6C. They share more than 99% identical DNA sequence.

## Notable Publications

Author	Pubmed ID	Journal	Application
Junfeng Zhang	33221741	Aging (Albany NY)	IF, IHC
Zhenkun Zhang	33159581	Cell Tissue Res	IF

## Storage

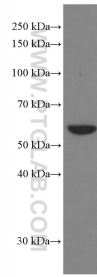
**Storage:**  
Store at -20°C. Stable for one year after shipment.  
**Storage Buffer:**  
PBS with 0.02% sodium azide and 50% glycerol pH 7.3.  
Aliquoting is unnecessary for -20°C storage

\*\*\* 20ul sizes contain 0.1% BSA

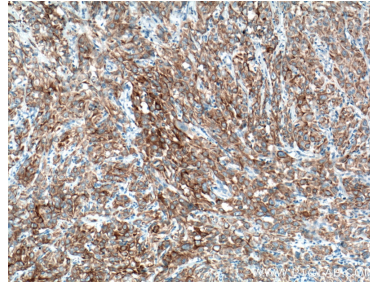
For technical support and original validation data for this product please contact:  
T: 1 (888) 4PTGLAB (1-888-478-4522) (toll free in USA), or 1(312) 455-8498 (outside USA)  
E: proteintech@ptglab.com  
W: ptglab.com

This product is exclusively available under Proteintech Group brand and is not available to purchase from any other manufacturer.

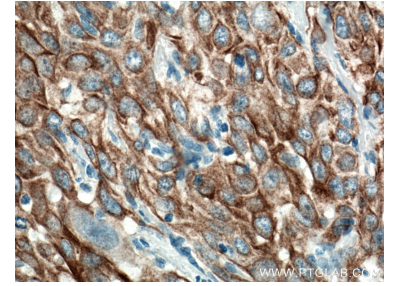
## Selected Validation Data



A431 cells were subjected to SDS PAGE followed by western blot with 66685-1-Ig (KRT6A antibody) at dilution of 1:100000 incubated at room temperature for 1.5 hours.



Immunohistochemical analysis of paraffin-embedded human cervical cancer tissue slide using 66685-1-Ig (KRT6A antibody) at dilution of 1:2000 (under 10x lens. Heat mediated antigen retrieval with Tris-EDTA buffer (pH 9.0).



Immunohistochemical analysis of paraffin-embedded human cervical cancer tissue slide using 66685-1-Ig (KRT6A antibody) at dilution of 1:2000 (under 40x lens. Heat mediated antigen retrieval with Tris-EDTA buffer (pH 9.0).