

For Research Use Only

# CALD1 Monoclonal antibody, PBS Only (Detector)

Catalog Number: 66693-2-PBS



## Basic Information

<b>Catalog Number:</b> 66693-2-PBS	<b>GenBank Accession Number:</b> BC040354	<b>Purification Method:</b> Protein A purification
<b>Size:</b> 100ug , Concentration: 1 mg/ml by Nanodrop;	<b>GeneID (NCBI):</b> 800	<b>CloneNo.:</b> 1B8B3
<b>Source:</b> Mouse	<b>UNIPROT ID:</b> Q05682	
<b>Isotype:</b> IgG2b	<b>Full Name:</b> caldesmon 1	
<b>Immunogen Catalog Number:</b> AG13676	<b>Calculated MW:</b> 538 aa, 63 kDa	

## Applications

**Tested Applications:**  
Cytometric bead array, Indirect ELISA, Sample test

**Species Specificity:**  
human

## Product Information

66693-2-PBS targets CALD1 as part of a matched antibody pair:

MP51351-1: 66693-1-PBS capture and 66693-2-PBS detection (validated in Cytometric bead array)

Unconjugated mouse monoclonal antibody pair in PBS only (BSA and azide free) storage buffer at a concentration of 1 mg/mL, ready for conjugation.

This conjugation ready format makes antibodies ideal for use in many applications including: ELISAs, multiplex assays requiring matched pairs, mass cytometry, and multiplex imaging applications. Antibody use should be optimized by the end user for each application and assay.

## Storage

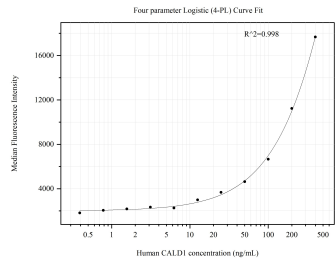
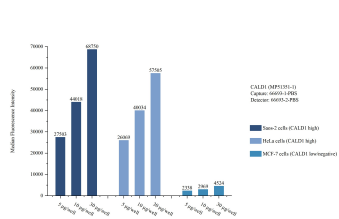
**Storage:**  
Store at -80°C.

**Storage Buffer:**  
PBS only, pH7.3

For technical support and original validation data for this product please contact:  
T: 1 (888) 4PTGLAB (1-888-478-4522) (toll free in USA), or 1(312) 455-8498 (outside USA)  
E: [proteintech@ptglab.com](mailto:proteintech@ptglab.com)  
W: [ptglab.com](http://ptglab.com)

This product is exclusively available under Proteintech Group brand and is not available to purchase from any other manufacturer.

Selected Validation Data



Sample test of MP51351-1, CALD1 Monoclonal Matched Antibody Pair, PBS Only. Capture antibody: 66693-1-PBS. Detection antibody: 66693-2-PBS.

Cytometric bead array standard curve of MP51351-1, CALD1 Monoclonal Matched Antibody Pair, PBS Only. Capture antibody: 66693-1-PBS. Detection antibody: 66693-2-PBS. Standard:Ag13676. Range: 0.391-400 ng/mL.