

CD21 Monoclonal antibody

Catalog Number: 66701-1-Ig

Basic Information

Catalog Number: 66701-1-Ig	GenBank Accession Number: BC136394	Purification Method: Protein A purification
Size: 150ul , Concentration: 1500 ug/ml by 1380 Nanodrop and 1000 ug/ml by Bradford method using BSA as the standard;	GeneID (NCBI): 1380	CloneNo.: 1D9A3
Source: Mouse	ENSEMBL Gene ID: ENSG00000117322	Recommended Dilutions: WB 1:2000-1:10000
Isotype: IgG2a	UNIPROT ID: P20023	
Immunogen Catalog Number: AG18058	Full Name: complement component (3d/Epstein Barr virus) receptor 2	
	Calculated MW: 1092 aa, 119 kDa	
	Observed MW: 150 kDa	

Applications

Tested Applications: WB, ELISA	Positive Controls: WB : human spleen tissue,
Species Specificity: Human	

Background Information

CD21, also known as complement receptor type 2 (CR2), complement C3d receptor, and Epstein-Barr virus receptor, is a transmembrane protein that contains a small cytoplasmic domain, a transmembrane region and an extracellular domain consisting of 15 tandem short consensus repeat sequences (PMID: 6230668; 2551147). It is expressed on B cells, follicular dendritic cells, thymocytes and a subset of peripheral T cells (PMID: 26119182). CD21 binds complement fragments C3d, C3dg and iC3b and acts as a receptor for the Epstein-Barr virus (PMID: 7753047). On B cells, together with CD19 and CD81, CD21 forms a complex that functions as a co-receptor to the BCR (PMID: 7542009). It is involved in B cells activation and functions.

Storage

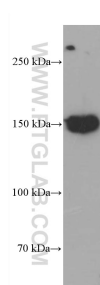
Storage:
Store at -20°C. Stable for one year after shipment.
Storage Buffer:
PBS with 0.02% sodium azide and 50% glycerol pH 7.3.
Aliquoting is unnecessary for -20°C storage

*** 20ul sizes contain 0.1% BSA

For technical support and original validation data for this product please contact:
T: 1 (888) 4PTGLAB (1-888-478-4522) (toll free in USA), or 1(312) 455-8498 (outside USA)
E: proteintech@ptglab.com
W: ptglab.com

This product is exclusively available under Proteintech Group brand and is not available to purchase from any other manufacturer.

Selected Validation Data



human spleen tissue were subjected to SDS PAGE followed by western blot with 66701-1-Ig (CD21 antibody) at dilution of 1:5000 incubated at room temperature for 1.5 hours.