

For Research Use Only

# TRIB3 Monoclonal antibody

Catalog Number: 66702-1-Ig **3 Publications**



## Basic Information

<b>Catalog Number:</b> 66702-1-Ig	<b>GenBank Accession Number:</b> BC027484	<b>Purification Method:</b> Protein G purification
<b>Size:</b> 150ul , Concentration: 1800 ug/ml by Nanodrop and 1000 ug/ml by Bradford method using BSA as the standard;	<b>GeneID (NCBI):</b> 57761	<b>CloneNo.:</b> 2C10C7
<b>Source:</b> Mouse	<b>UNIPROT ID:</b> Q96RU7	<b>Recommended Dilutions:</b> WB 1:2000-1:10000
<b>Isotype:</b> IgG1	<b>Full Name:</b> tribbles homolog 3 (Drosophila)	
<b>Immunogen Catalog Number:</b> AG25776	<b>Calculated MW:</b> 358 aa, 40 kDa	
	<b>Observed MW:</b> 40-45 kDa	

## Applications

<b>Tested Applications:</b> WB, ELISA	<b>Positive Controls:</b> WB : HT-29 cells, MCF-7 cells, rat liver tissue, mouse hepatocytes, DU 145 cells, LNCaP cells, PC-3 cells, HUVEC cells, HepG2 cells, L02 cells
<b>Cited Applications:</b> WB	
<b>Species Specificity:</b> human, mouse, rat	
<b>Cited Species:</b> human, mouse	

## Background Information

TRIB3 is a pseudokinase molecule that affects a number of cellular functions. TRIB3 has been reported to be highly activated in the presence of a variety of stressors, including the deprivation of neurotrophic factors, hypoxia, and ER stress. TRIB3 protein is associated with a good prognosis in human breast cancer patients, possibly due to the fact that TRIB3 is involved in hypoxia tolerance. (PMID: 21704407). TRIB3 protein predicted molecular weights is approximately 39-45 kDa. (PMID: 31191318, PMID: 24414038, PMID: 31578236).

## Notable Publications

Author	Pubmed ID	Journal	Application
Hang Zhao	31118581	Drug Des Devel Ther	WB
Yang-Yang Lu	39454374	Phytomedicine	WB
Jean-David Morel	36752209	JCI Insight	WB

## Storage

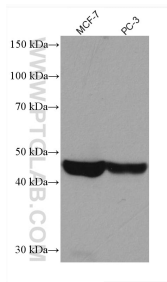
**Storage:**  
Store at -20°C. Stable for one year after shipment.  
**Storage Buffer:**  
PBS with 0.02% sodium azide and 50% glycerol, pH7.3  
Aliquoting is unnecessary for -20°C storage

\*\*\* 20ul sizes contain 0.1% BSA

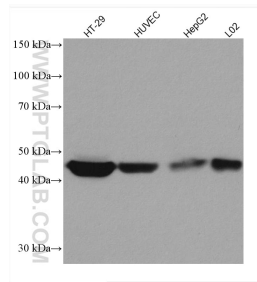
For technical support and original validation data for this product please contact:  
T: 1 (888) 4PTGLAB (1-888-478-4522) (toll free in USA), or 1(312) 455-8498 (outside USA)  
E: [proteintech@ptglab.com](mailto:proteintech@ptglab.com)  
W: [ptglab.com](http://ptglab.com)

This product is exclusively available under Proteintech Group brand and is not available to purchase from any other manufacturer.

## Selected Validation Data



Various lysates were subjected to SDS PAGE followed by western blot with 66702-1-Ig (TRIB3 antibody) at dilution of 1:5000 incubated at room temperature for 1.5 hours.



Various lysates were subjected to SDS PAGE followed by western blot with 66702-1-Ig (TRIB3 antibody) at dilution of 1:5000 incubated at room temperature for 1.5 hours.