

For Research Use Only

# ATG13 Monoclonal antibody, PBS Only



Catalog Number: 66708-1-PBS

## Basic Information

<b>Catalog Number:</b> 66708-1-PBS	<b>GenBank Accession Number:</b> BC001331	<b>Purification Method:</b> Protein G purification
<b>Size:</b> 100ug , Concentration: 1 mg/ml by Nanodrop;	<b>GeneID (NCBI):</b> 9776	<b>CloneNo.:</b> 1C3A7
<b>Source:</b> Mouse	<b>UNIPROT ID:</b> O75143	
<b>Isotype:</b> IgG1	<b>Full Name:</b> KIAA0652	
<b>Immunogen Catalog Number:</b> AG12968	<b>Calculated MW:</b> 57 kDa	
	<b>Observed MW:</b> 57 kDa	

## Applications

**Tested Applications:**  
WB, IF, FC, IHC, Indirect ELISA

**Species Specificity:**  
Human, Mouse, Rat, Pig

## Background Information

ATG13 is one component protein of the ULK1 complex which is required for autophagosome formation and mitophagy. ATG13 has two nutrient regulatory phosphorylation sites and the phosphorylation status of ATG13 affect regulation of autophagy by modulating enzyme activity and cellular localization of ULK1. Besides, it has been reported the nonautophagic function of ATG13 on cardiac development for ATG13-deficient embryos show myocardial growth defects.(PMID:27387056, 26801615, 26644405)

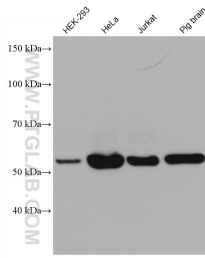
## Storage

**Storage:**  
Store at -80°C.  
**Storage Buffer:**  
PBS Only

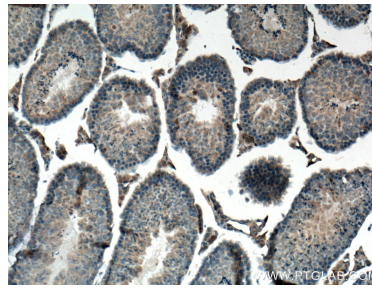
For technical support and original validation data for this product please contact:  
T: 1 (888) 4PTGLAB (1-888-478-4522) (toll free in USA), or 1(312) 455-8498 (outside USA)  
E: [proteintech@ptglab.com](mailto:proteintech@ptglab.com)  
W: [ptglab.com](http://ptglab.com)

This product is exclusively available under Proteintech Group brand and is not available to purchase from any other manufacturer.

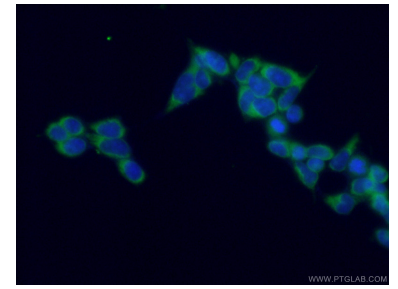
## Selected Validation Data



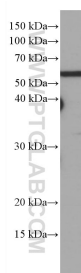
Various lysates were subjected to SDS PAGE followed by western blot with 66708-1-Ig (ATG13 antibody) at dilution of 1:3000 incubated at room temperature for 1.5 hours. This data was developed using the same antibody clone with 66708-1-PBS in a different storage buffer formulation.



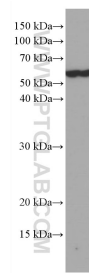
Immunohistochemical analysis of paraffin-embedded mouse testis tissue slide using 66708-1-Ig (KIAA0652 antibody) at dilution of 1:200 (under 10x lens). Heat mediated antigen retrieval with Tris-EDTA buffer (pH 9.0). This data was developed using the same antibody clone with 66708-1-PBS in a different storage buffer formulation.



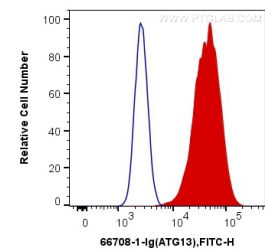
Immunofluorescent analysis of (-20°C Ethanol) fixed HEK-293 cells using 66708-1-Ig (KIAA0652 antibody) at dilution of 1:100 and Alexa Fluor 488-Conjugated AffiniPure Goat Anti-Mouse IgG(H+L). This data was developed using the same antibody clone with 66708-1-PBS in a different storage buffer formulation.



BGC-823 cells were subjected to SDS PAGE followed by western blot with 66708-1-Ig (KIAA0652 antibody) at dilution of 1:2000 incubated at room temperature for 1.5 hours. This data was developed using the same antibody clone with 66708-1-PBS in a different storage buffer formulation.



NIH/3T3 cells were subjected to SDS PAGE followed by western blot with 66708-1-Ig (KIAA0652 antibody) at dilution of 1:2000 incubated at room temperature for 1.5 hours. This data was developed using the same antibody clone with 66708-1-PBS in a different storage buffer formulation.



1X10<sup>6</sup> HeLa cells were intracellularly stained with 0.4 ug Anti-Human ATG13 (66708-1-Ig, Clone:1C3A7) and CoraLite®488-Conjugated AffiniPure Goat Anti-Mouse IgG(H+L) at dilution 1:1000 (red), or 0.4 ug Control Antibody. Cells were fixed with 4% PFA and permeabilized with Flow Cytometry Perm Buffer (PF00011-C). This data was developed using the same antibody clone with 66708-1-PBS in a different storage buffer formulation.