

For Research Use Only

RHEB Monoclonal antibody

Catalog Number: 66714-1-Ig



Basic Information

Catalog Number: 66714-1-Ig	GenBank Accession Number: BC016155	Purification Method: Protein G purification
Size: 150ul , Concentration: 1500 ug/ml by Nanodrop and 1000 ug/ml by Bradford method using BSA as the standard;	GeneID (NCBI): 6009	CloneNo.: 2F9H8
Source: Mouse	UNIPROT ID: Q15382	Recommended Dilutions: WB 1:1000-1:3000 IHC 1:200-1:800 IF-P 1:50-1:500
Isotype: IgG1	Full Name: Ras homolog enriched in brain	
Immunogen Catalog Number: AG8887	Calculated MW: 184 aa, 20 kDa	
	Observed MW: 18 kDa	

Applications

Tested Applications: WB, IHC, IF-P, ELISA	Positive Controls:
Species Specificity: human, mouse	WB : fetal human brain tissue, HeLa cells, DU 145 cells, mouse brain tissue
Note-IHC: suggested antigen retrieval with TE buffer pH 9.0; (*) Alternatively, antigen retrieval may be performed with citrate buffer pH 6.0	IHC : human skin cancer tissue, IF-P : human pancreas cancer tissue, mouse pancreas tissue

Background Information

Rheb is a member of the Ras superfamily small GTPases that plays important roles in the regulation of protein synthesis and growth in response to nutrient and growth factors. It is well known to bind and activate mTOR, a serine/threonine kinase which augments protein synthesis. Rheb has GTPase activity and shuttles between a GDP-bound form and a GTP-bound form, and farnesylation of the protein is required for this activity.

Storage

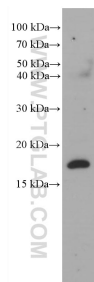
Storage:
Store at -20°C. Stable for one year after shipment.
Storage Buffer:
PBS with 0.02% sodium azide and 50% glycerol pH 7.3.
Aliquoting is unnecessary for -20°C storage

*** 20ul sizes contain 0.1% BSA

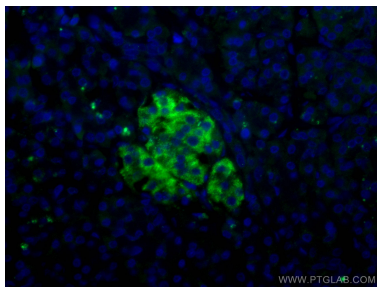
For technical support and original validation data for this product please contact:
T: 1 (888) 4PTGLAB (1-888-478-4522) (toll free in USA), or 1(312) 455-8498 (outside USA)
E: proteintech@ptglab.com
W: ptglab.com

This product is exclusively available under Proteintech Group brand and is not available to purchase from any other manufacturer.

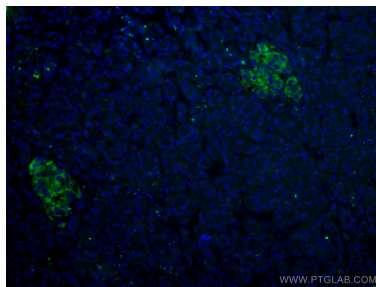
Selected Validation Data



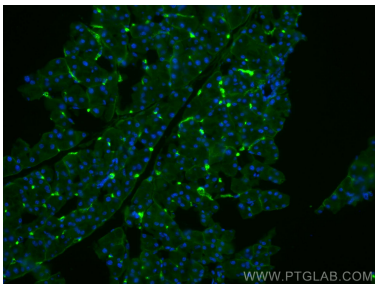
fetal human brain tissue were subjected to SDS PAGE followed by western blot with 66714-1-Ig (RHEB antibody) at dilution of 1:2000 incubated at room temperature for 1.5 hours.



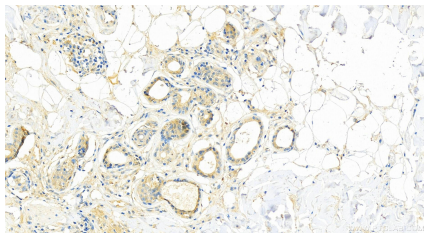
Immunofluorescent analysis of (4% PFA) fixed human pancreas cancer tissue using RHEB antibody (66714-1-Ig, Clone: 2F9H8) at dilution of 1:200 and CoraLite®488-Conjugated AffiniPure Goat Anti-Mouse IgG(H+L).



Immunofluorescent analysis of (4% PFA) fixed human pancreas cancer tissue using RHEB antibody (66714-1-Ig, Clone: 2F9H8) at dilution of 1:200 and CoraLite®488-Conjugated AffiniPure Goat Anti-Mouse IgG(H+L).



Immunofluorescent analysis of (4% PFA) fixed mouse pancreas tissue using RHEB antibody (66714-1-Ig, Clone: 2F9H8) at dilution of 1:400 and CoraLite®488-Conjugated AffiniPure Goat Anti-Mouse IgG(H+L).



Immunohistochemical analysis of paraffin-embedded skin cancer slide using 66714-1-Ig (RHEB antibody) at dilution of 1:400 (under 20x lens). Heat mediated antigen retrieval with Tris-EDTA buffer (pH 9.0).