

For Research Use Only

# GSTP1 Monoclonal antibody

Catalog Number: 66715-1-Ig

Featured Product

7 Publications



## Basic Information

Catalog Number:

66715-1-Ig

Size:

150ul, Concentration: 1600 ug/ml by 2950  
Nanodrop and 1000 ug/ml by Bradford  
method using BSA as the standard;

Source:

Mouse

Isotype:

IgG1

Immunogen Catalog Number:

AG8880

GenBank Accession Number:

BC010915

GeneID (NCBI):

2950

UNIPROT ID:

P09211

Full Name:

glutathione S-transferase pi 1

Calculated MW:

210 aa, 23 kDa

Observed MW:

23 kDa

Purification Method:

Protein A purification

CloneNo.:

2D4A6

Recommended Dilutions:

WB 1:5000-1:50000

IP 0.5-4.0 ug for 1.0-3.0 mg of total  
protein lysate

IHC 1:500-1:2000

IF/ICC 1:400-1:1600

## Applications

Tested Applications:

WB, IHC, IF/ICC, IP, ELISA

Cited Applications:

WB, IF, CoIP

Species Specificity:

human, rat

Cited Species:

human, mouse, rat

**Note-IHC: suggested antigen retrieval with  
TE buffer pH 9.0; (\*) Alternatively, antigen  
retrieval may be performed with citrate  
buffer pH 6.0**

Positive Controls:

WB : HuH-7 cells, HeLa cells, HEK-293 cells, HepG2  
cells, Jurkat cells, HCT 116 cells, Caco-2 cells, SCaBER  
cells, MCF-10A cells

IP : HeLa cells,

IHC : human colon cancer tissue, human cervical  
cancer tissue, human kidney tissue, human ovary  
tumor tissue

IF/ICC : HepG2 cells,

## Notable Publications

Author	Pubmed ID	Journal	Application
Qiu-Lin Yan	36209565	Bioorg Chem	WB
Qi Feng	32535103	Biochem Pharmacol	WB
Wan-Li Duan	38574838	Eur J Pharmacol	CoIP

## Storage

Storage:

Store at -20°C. Stable for one year after shipment.

Storage Buffer:

PBS with 0.02% sodium azide and 50% glycerol

Aliquoting is unnecessary for -20°C storage

\*\*\* 20ul sizes contain 0.1% BSA

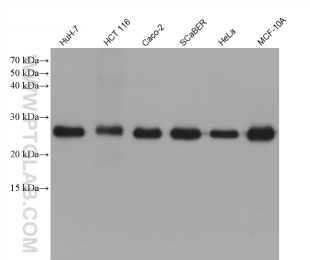
For technical support and original validation data for this product please contact:

T: 1 (888) 4PTGLAB (1-888-478-4522) (toll free  
in USA), or 1(312) 455-8498 (outside USA)

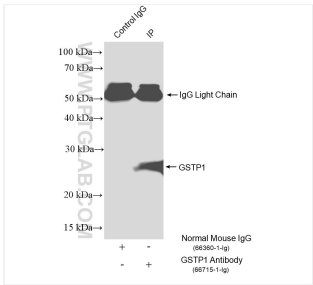
E: [proteintech@ptglab.com](mailto:proteintech@ptglab.com)  
W: [ptglab.com](http://ptglab.com)

This product is exclusively available under Proteintech  
Group brand and is not available to purchase from any  
other manufacturer.

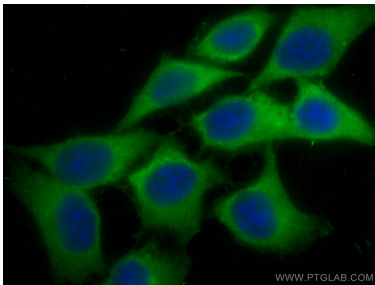
Selected Validation Data



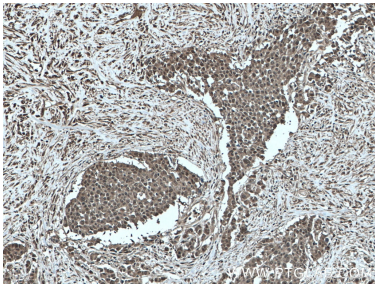
Various lysates were subjected to SDS PAGE followed by western blot with 66715-1-Ig (GSTP1 antibody) at dilution of 1:10000 incubated at room temperature for 1.5 hours.



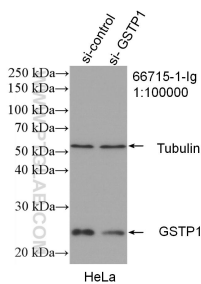
IP result of anti-GSTP1 (IP:66715-1-Ig, 4ug; Detection:66715-1-Ig 1:4000) with HeLa cells lysate 1640 ug.



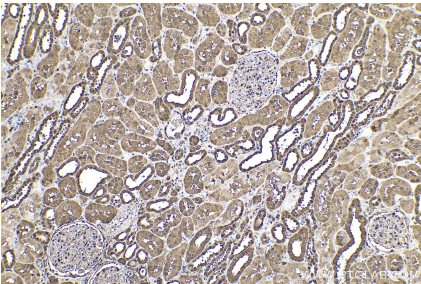
Immunofluorescent analysis of (-20°C Methanol) fixed HepG2 cells using GSTP1 antibody (66715-1-Ig, Clone: 2D4A6) at dilution of 1:800 and CoraLite®488-Conjugated AffiniPure Goat Anti-Mouse IgG(H+L).



Immunohistochemical analysis of paraffin-embedded human colon cancer tissue slide using 66715-1-Ig (GSTP1 antibody) at dilution of 1:1000 (under 10x lens. Heat mediated antigen retrieval with Tris-EDTA buffer (pH 9.0).



WB result of GSTP1 antibody (66715-1-Ig; 1:100000; incubated at room temperature for 1.5 hours) with sh-Control and sh-GSTP1 transfected HeLa cells.



Immunohistochemical analysis of paraffin-embedded human kidney tissue slide using 66715-1-Ig (GSTP1 antibody) at dilution of 1:4000 (under 10x lens). Heat mediated antigen retrieval with Tris-EDTA buffer (pH 9.0).