

For Research Use Only

GSTP1 Monoclonal antibody, PBS Only (Capture)

Catalog Number: 66715-2-PBS



Basic Information

Catalog Number: 66715-2-PBS	GenBank Accession Number: BC010915	Purification Method: Protein G purification
Size: 100ug , Concentration: 1 mg/ml by Nanodrop;	GeneID (NCBI): 2950	CloneNo.: 3G10H2
Source: Mouse	UNIPROT ID: P09211	
Isotype: IgG1	Full Name: glutathione S-transferase pi 1	
Immunogen Catalog Number: AG8880	Calculated MW: 210 aa, 23 kDa	

Applications

Tested Applications:
Cytometric bead array, Sandwich ELISA, Indirect ELISA, Sample test

Species Specificity:
human

Product Information

66715-2-PBS targets GSTP1 as part of a matched antibody pair:

MP50579-1: 66715-2-PBS capture and 66715-3-PBS detection (validated in Cytometric bead array, Sandwich ELISA)

Unconjugated mouse monoclonal antibody pair in PBS only (BSA and azide free) storage buffer at a concentration of 1 mg/mL, ready for conjugation.

This conjugation ready format makes antibodies ideal for use in many applications including: ELISAs, multiplex assays requiring matched pairs, mass cytometry, and multiplex imaging applications. Antibody use should be optimized by the end user for each application and assay.

Storage

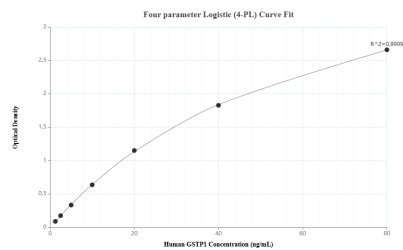
Storage:
Store at -80°C.

Storage Buffer:
PBS Only

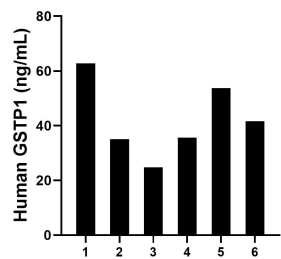
For technical support and original validation data for this product please contact:
T: 1 (888) 4PTGLAB (1-888-478-4522) (toll free in USA), or 1(312) 455-8498 (outside USA)
E: proteintech@ptglab.com
W: ptglab.com

This product is exclusively available under Proteintech Group brand and is not available to purchase from any other manufacturer.

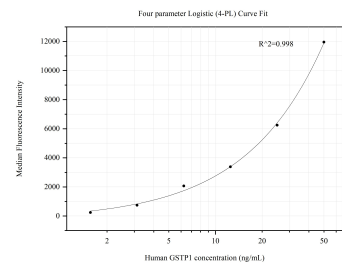
Selected Validation Data



Sandwich ELISA standard curve of MP50579-1, Human GSTP1 Monoclonal Matched Antibody Pair - PBS only. 66715-2-PBS was coated to a plate as the capture antibody and incubated with serial dilutions of standard Ag8880. 66715-3-PBS was HRP conjugated as the detection antibody. Range: 1.25-80 ng/mL



Serum of six individual healthy human donors was measured. The human GSTP1 concentration of detected samples was determined to be 42.26 ng/mL with a range of 24.74 - 62.83 ng/mL



Cytometric bead array standard curve of MP50579-1, GSTP1 Monoclonal Matched Antibody Pair, PBS Only. Capture antibody: 66715-2-PBS. Detection antibody: 66715-3-PBS. Standard:Ag8880. Range: 1.563-50 ng/mL