

For Research Use Only

RBX1 Monoclonal antibody

Catalog Number: 66716-1-Ig **2 Publications**



Basic Information

Catalog Number: 66716-1-Ig	GenBank Accession Number: BC001466	Purification Method: Protein G purification
Size: 150ul , Concentration: 1300 ug/ml by Nanodrop and 1000 ug/ml by Bradford method using BSA as the standard;	GeneID (NCBI): 9978	CloneNo.: 1F4D9
Source: Mouse	UNIPROT ID: P62877	Recommended Dilutions: WB 1:20000-1:50000 IHC 1:2500-1:10000 IF/ICC 1:1000-1:4000
Isotype: IgG1	Full Name: ring-box 1	
Immunogen Catalog Number: AG7005	Calculated MW: 12 kDa	
	Observed MW: 12-15 kDa	

Applications

Tested Applications: WB, IHC, IF/ICC, ELISA	Positive Controls: WB : HeLa cells, RAW 264.7 cells, HEK-293 cells, HepG2 cells, Jurkat cells
Cited Applications: WB, IP	IHC : human liver cancer tissue,
Species Specificity: human, mouse, rat	IF/ICC : A431 cells,
Cited Species: human	
Note-IHC: suggested antigen retrieval with TE buffer pH 9.0; (*) Alternatively, antigen retrieval may be performed with citrate buffer pH 6.0	

Background Information

RBX1(RING-box protein 1) is also named as RNF75, ROC1 and is a requisite component of the multi- subunit SCF family E3s36-40. It mediates the ubiquitination and subsequent proteasomal degradation of target proteins, including proteins involved in cell cycle progression, signal transduction, transcription and transcription-coupled nucleotide excision repair.

Notable Publications

Author	Pubmed ID	Journal	Application
Magda Wąchalśka	38442151	Proc Natl Acad Sci U S A	WB
Magda Wąchalśka	37808699	bioRxiv	WB,IP

Storage

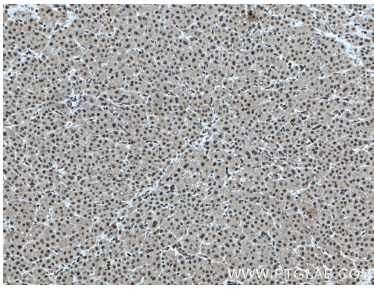
Storage:
Store at -20°C. Stable for one year after shipment.
Storage Buffer:
PBS with 0.02% sodium azide and 50% glycerol pH 7.3.
Aliquoting is unnecessary for -20°C storage

*** 20ul sizes contain 0.1% BSA

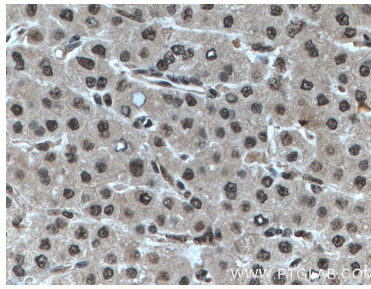
For technical support and original validation data for this product please contact:
T: 1 (888) 4PTGLAB (1-888-478-4522) (toll free in USA), or 1(312) 455-8498 (outside USA)
E: proteintech@ptglab.com
W: ptglab.com

This product is exclusively available under Proteintech Group brand and is not available to purchase from any other manufacturer.

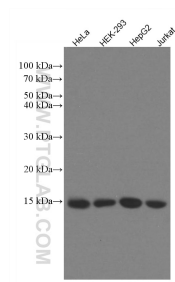
Selected Validation Data



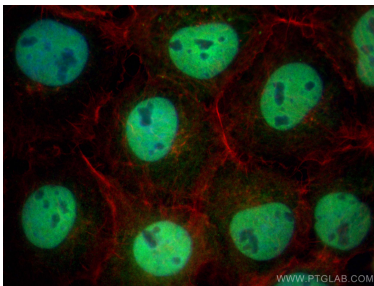
Immunohistochemical analysis of paraffin-embedded human liver cancer tissue slide using 66716-1-Ig (RBX1 antibody) at dilution of 1:5000 (under 10x lens) Heat mediated antigen retrieved with Sodium Citrate buffer (pH 6.0).



Immunohistochemical analysis of paraffin-embedded human liver cancer tissue slide using 66716-1-Ig (RBX1 antibody) at dilution of 1:5000 (under 40x lens) Heat mediated antigen retrieved with Sodium Citrate buffer (pH 6.0).



Various lysates were subjected to SDS PAGE followed by western blot with 66716-1-Ig (RBX1 antibody) at dilution of 1:50000 incubated at room temperature for 1.5 hours.



Immunofluorescent analysis of (4% PFA) fixed A431 cells using RBX1 antibody (66716-1-Ig, Clone: 1F4D9) at dilution of 1:2000 and Multi-rAb Coralite® Plus 488-Goat Anti-Mouse Recombinant Secondary Antibody (H+L) (RGAM002), CL594-phalloidin (red).