

CHCHD4 Monoclonal antibody

Catalog Number: 66718-1-Ig

Basic Information

Catalog Number: 66718-1-Ig	GenBank Accession Number: BC033775	Purification Method: Protein G purification
Size: 150ul , Concentration: 2000 ug/ml by Nanodrop and 1000 ug/ml by Bradford method using BSA as the standard;	GeneID (NCBI): 131474	CloneNo.: 3E4C6
Source: Mouse	UNIPROT ID: Q8N4Q1	Recommended Dilutions: WB 1:1000-1:3000 IHC 1:50-1:500 IF/ICC 1:1000-1:4000
Isotype: IgG1	Full Name: coiled-coil-helix-coiled-coil-helix domain containing 4	
Immunogen Catalog Number: AG15339	Calculated MW: 142 aa, 16 kDa	
	Observed MW: 22 kDa	

Applications

Tested Applications: WB, IHC, IF/ICC, ELISA	Positive Controls:
Species Specificity: Human, mouse, rat	WB : Raji cells, rat brain tissue, Ramos cells, Daudi cells
Note-IHC: suggested antigen retrieval with TE buffer pH 9.0; (*) Alternatively, antigen retrieval may be performed with citrate buffer pH 6.0	IHC : human testis tissue,
	IF/ICC : SK-BR-3 cells,

Background Information

CHCHD4, a component of human mitochondria, belongs to a protein family. It functions as chaperone and catalyzes the formation of disulfide bonds in substrate proteins, such as COX17. It is required for the import and folding of small cysteine-containing proteins (small Tim) in the mitochondrial intermembrane space (IMS).

Storage

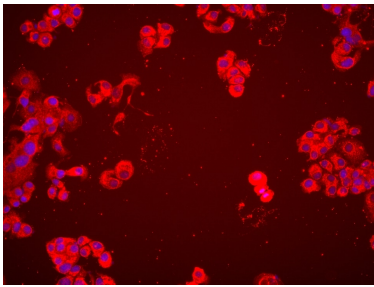
Storage:
Store at -20°C. Stable for one year after shipment.
Storage Buffer:
PBS with 0.02% sodium azide and 50% glycerol pH 7.3.
Aliquoting is unnecessary for -20°C storage

*** 20ul sizes contain 0.1% BSA

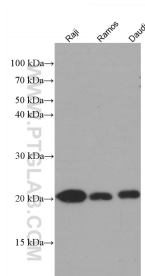
For technical support and original validation data for this product please contact:
T: 1 (888) 4PTGLAB (1-888-478-4522) (toll free in USA), or 1(312) 455-8498 (outside USA)
E: proteintech@ptglab.com
W: ptglab.com

This product is exclusively available under Proteintech Group brand and is not available to purchase from any other manufacturer.

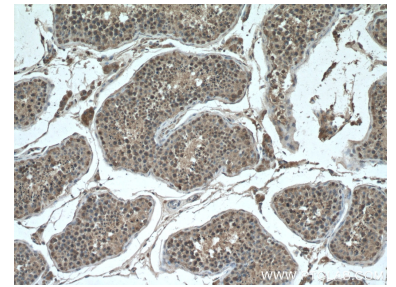
Selected Validation Data



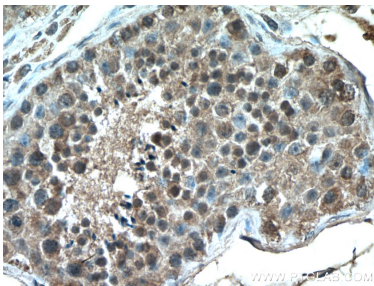
Immunofluorescent analysis of (4% PFA) fixed SK-BR-3 cells using CHCHD4 antibody (66718-1-Ig, Clone: 3E4C6) at dilution of 1:2000 and Multi-rAb CoraLite® Plus 594-Goat Anti-Mouse Recombinant Secondary Antibody (H+L) (Cat.NO. RGAM004).



Various lysates were subjected to SDS PAGE followed by western blot with 66718-1-Ig (CHCHD4 antibody) at dilution of 1:2000 incubated at room temperature for 1.5 hours.



Immunohistochemical analysis of paraffin-embedded human testis tissue slide using 66718-1-Ig (CHCHD4 antibody) at dilution of 1:200 (under 10x lens. Heat mediated antigen retrieval with Tris-EDTA buffer (pH 9.0).



Immunohistochemical analysis of paraffin-embedded human testis tissue slide using 66718-1-Ig (CHCHD4 antibody) at dilution of 1:200 (under 40x lens. Heat mediated antigen retrieval with Tris-EDTA buffer (pH 9.0).