

For Research Use Only

# CHCHD4 Monoclonal antibody, PBS Only



Catalog Number: 66718-1-PBS

## Basic Information

<b>Catalog Number:</b> 66718-1-PBS	<b>GenBank Accession Number:</b> BC033775	<b>Purification Method:</b> Protein G purification
<b>Size:</b> 100ug , Concentration: 1mg/ml by Nanodrop;	<b>GeneID (NCBI):</b> 131474	<b>CloneNo.:</b> 3E4C6
<b>Source:</b> Mouse	<b>UNIPROT ID:</b> Q8N4Q1	
<b>Isotype:</b> IgG1	<b>Full Name:</b> coiled-coil-helix-coiled-coil-helix domain containing 4	
<b>Immunogen Catalog Number:</b> AG15339	<b>Calculated MW:</b> 142 aa, 16 kDa	
	<b>Observed MW:</b> 22 kDa	

## Applications

**Tested Applications:**  
WB, IF, IHC, Indirect ELISA

**Species Specificity:**  
Human, mouse, rat

## Background Information

CHCHD4, a component of human mitochondria, belongs to a protein family. It functions as chaperone and catalyzes the formation of disulfide bonds in substrate proteins, such as COX17. It is required for the import and folding of small cysteine-containing proteins (small Tim) in the mitochondrial intermembrane space (IMS).

## Storage

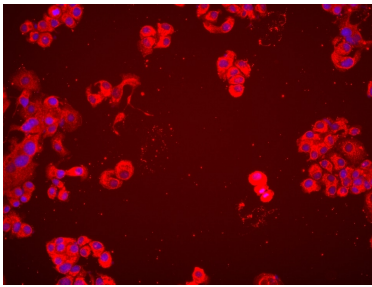
**Storage:**  
Store at -80°C.

**Storage Buffer:**  
PBS Only

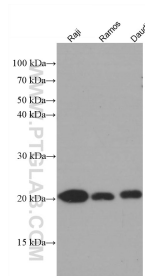
For technical support and original validation data for this product please contact:  
T: 1 (888) 4PTGLAB (1-888-478-4522) (toll free in USA), or 1(312) 455-8498 (outside USA)  
E: [proteintech@ptglab.com](mailto:proteintech@ptglab.com)  
W: [ptglab.com](http://ptglab.com)

This product is exclusively available under Proteintech Group brand and is not available to purchase from any other manufacturer.

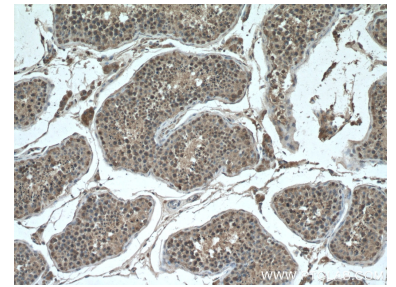
## Selected Validation Data



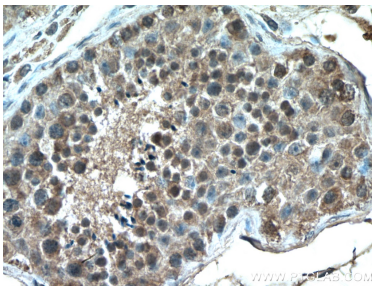
Immunofluorescent analysis of (4% PFA) fixed SK-BR-3 cells using CHCHD4 antibody (66718-1-Ig, Clone: 3E4C6) at dilution of 1:2000 and Multi-rAb CoraLite® Plus 594-Goat Anti-Mouse Recombinant Secondary Antibody (H+L) (Cat.NO. RGAM004). This data was developed using the same antibody clone with 66718-1-PBS in a different storage buffer formulation.



Various lysates were subjected to SDS PAGE followed by western blot with 66718-1-Ig (CHCHD4 antibody) at dilution of 1:2000 incubated at room temperature for 1.5 hours. This data was developed using the same antibody clone with 66718-1-PBS in a different storage buffer formulation.



Immunohistochemical analysis of paraffin-embedded human testis tissue slide using 66718-1-Ig (CHCHD4 antibody) at dilution of 1:200 (under 10x lens. Heat mediated antigen retrieval with Tris-EDTA buffer (pH 9.0). This data was developed using the same antibody clone with 66718-1-PBS in a different storage buffer formulation.



Immunohistochemical analysis of paraffin-embedded human testis tissue slide using 66718-1-Ig (CHCHD4 antibody) at dilution of 1:200 (under 40x lens. Heat mediated antigen retrieval with Tris-EDTA buffer (pH 9.0). This data was developed using the same antibody clone with 66718-1-PBS in a different storage buffer formulation.