

For Research Use Only

MRPS27 Monoclonal antibody

Catalog Number: 66724-1-Ig **3 Publications**



Basic Information

Catalog Number: 66724-1-Ig	GenBank Accession Number: BC030521	Purification Method: Protein A purification
Size: 150ul , Concentration: 2100 ug/ml by Nanodrop and 1000 ug/ml by Bradford method using BSA as the standard;	GeneID (NCBI): 23107	CloneNo.: 1B1B3
Source: Mouse	Full Name: mitochondrial ribosomal protein S27	Recommended Dilutions: WB 1:2000-1:10000 IHC 1:250-1:1000
Isotype: IgG2b	Calculated MW: 168 aa, 19 kDa, 48 kDa	
Immunogen Catalog Number: AG11047	Observed MW: 48 kDa	

Applications

Tested Applications: WB, IHC, ELISA	Positive Controls: WB : LNCaP cells, HeLa cells, A431 cells, HepG2 cells IHC : human breast cancer tissue,
Cited Applications: WB	
Species Specificity: Human	
Cited Species: human	
Note-IHC: suggested antigen retrieval with TE buffer pH 9.0; (*) Alternatively, antigen retrieval may be performed with citrate buffer pH 6.0	

Background Information

Genes encoding PPR (pentatricopeptide repeat)-containing proteins constitute one of the largest gene families in plants. The majority of these proteins are predicted to target organelles and to bind to RNA. Strikingly, there is a dearth of these proteins in mammals, although genomic searches reveal six candidates, all of which are also predicted to target the mitochondrion. One of these proteins, MRPS27 is participated in transcription and translation respectively. [PMID:18939947] MRPS27 is a component of the small subunit of the mitochondrial ribosome that is encoded by the nuclear genome [PMID: 11279123].

Notable Publications

Author	Pubmed ID	Journal	Application
Loukmane Karim	35884802	Biomedicines	WB
Jiaoyan Ma	39111634	Biochim Biophys Acta Mol Basis Dis	WB
Yoko Itakura	30157474	Aging (Albany NY)	

Storage

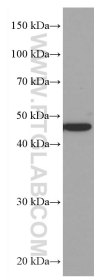
Storage:
Store at -20°C. Stable for one year after shipment.
Storage Buffer:
PBS with 0.02% sodium azide and 50% glycerol pH 7.3.
Aliquoting is unnecessary for -20°C storage

*** 20ul sizes contain 0.1% BSA

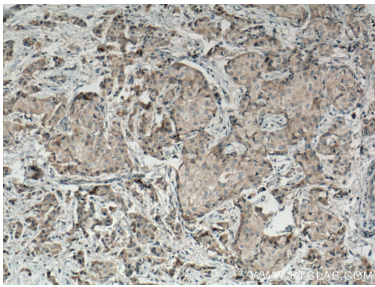
For technical support and original validation data for this product please contact:
T: 1 (888) 4PTGLAB (1-888-478-4522) (toll free in USA), or 1(312) 455-8498 (outside USA)
E: proteintech@ptglab.com
W: ptglab.com

This product is exclusively available under Proteintech Group brand and is not available to purchase from any other manufacturer.

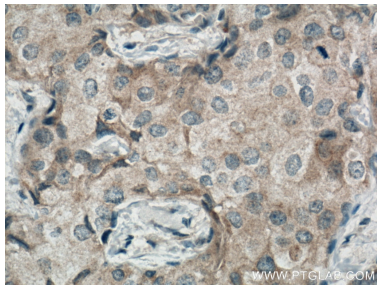
Selected Validation Data



LNCaP cells were subjected to SDS PAGE followed by western blot with 66724-1-Ig (MRPS27 antibody) at dilution of 1:5000 incubated at room temperature for 1.5 hours.



Immunohistochemical analysis of paraffin-embedded human breast cancer tissue slide using 66724-1-Ig (MRPS27 antibody) at dilution of 1:500 (under 10x lens. Heat mediated antigen retrieval with Tris-EDTA buffer (pH 9.0).



Immunohistochemical analysis of paraffin-embedded human breast cancer tissue slide using 66724-1-Ig (MRPS27 antibody) at dilution of 1:500 (under 40x lens. Heat mediated antigen retrieval with Tris-EDTA buffer (pH 9.0).