

For Research Use Only

# MRPS27 Monoclonal antibody, PBS Only



Catalog Number: 66724-1-PBS

## Basic Information

<b>Catalog Number:</b> 66724-1-PBS	<b>GenBank Accession Number:</b> BC030521	<b>Purification Method:</b> Protein A purification
<b>Size:</b> 100ug , Concentration: 1 mg/ml by Nanodrop;	<b>GeneID (NCBI):</b> 23107	<b>CloneNo.:</b> 1B1B3
<b>Source:</b> Mouse	<b>UNIPROT ID:</b> Q92552	
<b>Isotype:</b> IgG2b	<b>Full Name:</b> mitochondrial ribosomal protein S27	
<b>Immunogen Catalog Number:</b> AG11047	<b>Calculated MW:</b> 168 aa, 19 kDa, 48 kDa	
	<b>Observed MW:</b> 48 kDa	

## Applications

**Tested Applications:**  
WB, IHC, Indirect ELISA

**Species Specificity:**  
Human

## Background Information

Genes encoding PPR (pentatricopeptide repeat)-containing proteins constitute one of the largest gene families in plants. The majority of these proteins are predicted to target organelles and to bind to RNA. Strikingly, there is a dearth of these proteins in mammals, although genomic searches reveal six candidates, all of which are also predicted to target the mitochondrion. One of these proteins, MRPS27 is participated in transcription and translation respectively. [PMID:18939947] MRPS27 is a component of the small subunit of the mitochondrial ribosome that is encoded by the nuclear genome [PMID: 11279123].

## Storage

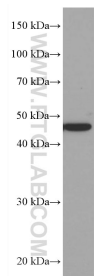
**Storage:**  
Store at -80°C.

**Storage Buffer:**  
PBS Only

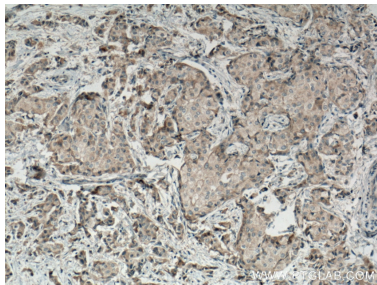
For technical support and original validation data for this product please contact:  
T: 1 (888) 4PTGLAB (1-888-478-4522) (toll free in USA), or 1(312) 455-8498 (outside USA)  
E: [proteintech@ptglab.com](mailto:proteintech@ptglab.com)  
W: [ptglab.com](http://ptglab.com)

This product is exclusively available under Proteintech Group brand and is not available to purchase from any other manufacturer.

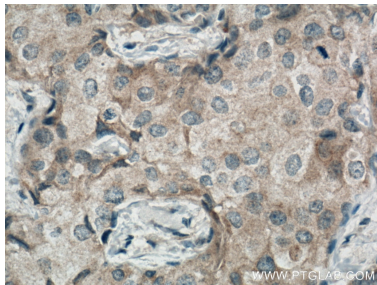
## Selected Validation Data



LNCaP cells were subjected to SDS PAGE followed by western blot with 66724-1-Ig (MRPS27 antibody) at dilution of 1:5000 incubated at room temperature for 1.5 hours. This data was developed using the same antibody clone with 66724-1-PBS in a different storage buffer formulation.



Immunohistochemical analysis of paraffin-embedded human breast cancer tissue slide using 66724-1-Ig (MRPS27 antibody) at dilution of 1:500 (under 10x lens. Heat mediated antigen retrieval with Tris-EDTA buffer (pH 9.0). This data was developed using the same antibody clone with 66724-1-PBS in a different storage buffer formulation.



Immunohistochemical analysis of paraffin-embedded human breast cancer tissue slide using 66724-1-Ig (MRPS27 antibody) at dilution of 1:500 (under 40x lens. Heat mediated antigen retrieval with Tris-EDTA buffer (pH 9.0). This data was developed using the same antibody clone with 66724-1-PBS in a different storage buffer formulation.