

For Research Use Only

CNPase Monoclonal antibody

Catalog Number: 66729-1-Ig

Featured Product

2 Publications



Basic Information

Catalog Number:

66729-1-Ig

Size:

150ul, Concentration: 1300 ug/ml by Nanodrop and 1000 ug/ml by Bradford method using BSA as the standard;

Source:

Mouse

Isotype:

IgG1

Immunogen Catalog Number:

AG4227

GenBank Accession Number:

BC028040

GeneID (NCBI):

1267

UNIPROT ID:

P09543

Full Name:

2',3'-cyclic nucleotide 3' phosphodiesterase

Calculated MW:

421 aa, 48 kDa

Observed MW:

45-48 kDa

Purification Method:

Protein A purification

CloneNo.:

1B9G9

Recommended Dilutions:

WB 1:2000-1:10000

IF-P 1:50-1:500

Applications

Tested Applications:

WB, IF-P, FC (Intra), ELISA

Cited Applications:

WB, IF

Species Specificity:

human, mouse, rat, pig

Cited Species:

mouse, rat

Positive Controls:

WB : pig cerebellum tissue, U-251 cells, human brain tissue, HepG2 cells, rat brain tissue, rat cerebellum tissue

IF-P : mouse brain tissue,

Background Information

CNP(2',3'-cyclic-nucleotide 3'-phosphodiesterase) belongs to the cyclic nucleotide phosphodiesterase family. It plays an essential role in axonal survival but not in myelin assembly, coupling oligodendroglial functions in axonal support and myelination. This protein has 2 isoforms produced by alternative splicing with molecular mass of 45 and 48 kDa.

Notable Publications

Author	Pubmed ID	Journal	Application
Yingmei Zhang	37803915	CNS Neurosci Ther	IF, WB
Mingcui Zheng	34082015	J Ethnopharmacol	WB

Storage

Storage:

Store at -20°C. Stable for one year after shipment.

Storage Buffer:

PBS with 0.02% sodium azide and 50% glycerol pH 7.3.

Aliquoting is unnecessary for -20°C storage

*** 20ul sizes contain 0.1% BSA

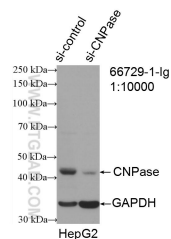
For technical support and original validation data for this product please contact:

T: 1 (888) 4PTGLAB (1-888-478-4522) (toll free in USA), or 1(312) 455-8498 (outside USA)

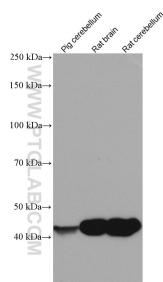
E: proteintech@ptglab.com
W: ptglab.com

This product is exclusively available under Proteintech Group brand and is not available to purchase from any other manufacturer.

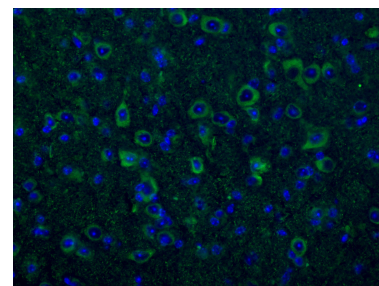
Selected Validation Data



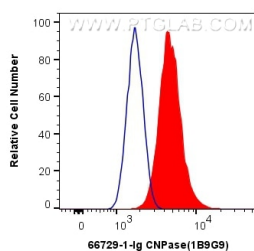
WB result of CNPase antibody (66729-1-Ig; 1:10000; incubated at room temperature for 1.5 hours) with sh-Control and sh-CNPase transfected HepG2 cells.



Various lysates were subjected to SDS PAGE followed by western blot with 66729-1-Ig (CNPase antibody) at dilution of 1:5000 incubated at room temperature for 1.5 hours.



Immunofluorescent analysis of (4% PFA) fixed mouse brain tissue using 66729-1-Ig (CNPase antibody), at dilution of 1:200 and CoraLite® 488-Conjugated AffiniPure Goat Anti-Mouse IgG(H+L).



1X10⁶ HepG2 cells were intracellularly stained with 0.5 ug Anti-Human CNPase (66729-1-Ig, Clone:1B9G9) and CoraLite® 488-Conjugated AffiniPure Goat Anti-Mouse IgG(H+L) at dilution 1:1000 (red), or 0.5 ug Control Antibody. Cells were fixed with 4% PFA and permeabilized with Flow Cytometry Perm Buffer (PF00011-C).