

For Research Use Only

HIF2 α /EPAS1 Monoclonal antibody

Catalog Number: 66731-1-Ig **7 Publications**



Basic Information

Catalog Number: 66731-1-Ig	GenBank Accession Number: BC051338	Purification Method: Protein A purification
Size: 150ul , Concentration: 1600 ug/ml by 2034 Nanodrop and 1000 ug/ml by Bradford method using BSA as the standard;	GeneID (NCBI): 2034	CloneNo.: 2F6B12
Source: Mouse	UNIPROT ID: Q99814	Recommended Dilutions: WB 1:1000-1:5000 IHC 1:250-1:1000
Isotype: IgG2a	Full Name: endothelial PAS domain protein 1	
Immunogen Catalog Number: AG24886	Calculated MW: 96 kDa	
	Observed MW: 120 kDa	

Applications

Tested Applications: WB, IHC, ELISA	Positive Controls: WB : HeLa cells, HepG2 cells IHC : human colon cancer tissue,
Cited Applications: WB, IHC, IF	
Species Specificity: Human	
Cited Species: human, bovine	
Note-IHC: suggested antigen retrieval with TE buffer pH 9.0; (*) Alternatively, antigen retrieval may be performed with citrate buffer pH 6.0	

Background Information

Endothelial PAS domain-containing protein 1 (EPAS1), also known as Hypoxia-inducible factor 2-alpha (HIF2-alpha, HIF2A), is a transcription factor involved in the induction of oxygen regulated genes. Binds to core DNA sequence 5'-[AG]CGTG-3' within the hypoxia response element (HRE) of target gene promoters. Regulates the vascular endothelial growth factor (VEGF) expression and seems to be implicated in the development of blood vessels and the tubular system of lung. May also play a role in the formation of the endothelium that gives rise to the blood brain barrier. Potent activator of the Tie-2 tyrosine kinase expression. Activation seems to require recruitment of transcriptional coactivators such as CREBBP and probably EP300. Interaction with redox regulatory protein APEX seems to activate CTAD. EPAS1 is expressed in most tissues, with highest levels in placenta, lung and heart. Selectively expressed in endothelial cells.

Notable Publications

Author	Pubmed ID	Journal	Application
Chen Lv	36325096	Front Vet Sci	WB, IF
Dayan Sun	33279689	Cell Mol Gastroenterol Hepatol	WB
Xuwei Zhai	39747579	Nat Cell Biol	WB

Storage

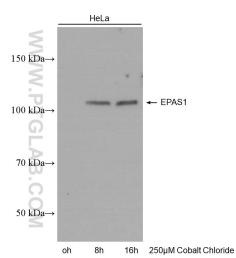
Storage:
Store at -20°C. Stable for one year after shipment.
Storage Buffer:
PBS with 0.02% sodium azide and 50% glycerol pH 7.3.
Aliquoting is unnecessary for -20°C storage

***** 20ul sizes contain 0.1% BSA**

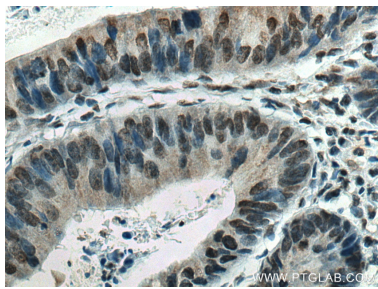
For technical support and original validation data for this product please contact:
T: 1 (888) 4PTGLAB (1-888-478-4522) (toll free in USA), or 1(312) 455-8498 (outside USA)
E: proteintech@ptglab.com
W: ptglab.com

This product is exclusively available under Proteintech Group brand and is not available to purchase from any other manufacturer.

Selected Validation Data



untreated and cobalt chloride treated HeLa cells were subjected to SDS PAGE followed by western blot with 66731-1-Ig (EPAS1 antibody) at dilution of 1:5000 incubated at room temperature for 1.5 hours.



Immunohistochemical analysis of paraffin-embedded human colon cancer tissue slide using 66731-1-Ig (EPAS1 antibody) at dilution of 1:500 (under 40x lens). Heat mediated antigen retrieval with Tris-EDTA buffer (pH 9.0).