

For Research Use Only

# EPHA2 Monoclonal antibody

Catalog Number: 66736-1-Ig

Featured Product

9 Publications



## Basic Information

Catalog Number:

66736-1-Ig

Size:

150ul, Concentration: 1200 ug/ml by Nanodrop and 1000 ug/ml by Bradford method using BSA as the standard;

Source:

Mouse

Isotype:

IgG1

Immunogen Catalog Number:

AG22566

GenBank Accession Number:

BC037166

GeneID (NCBI):

1969

UNIPROT ID:

P29317

Full Name:

EPH receptor A2

Calculated MW:

976 aa, 108 kDa

Observed MW:

130 kDa

Purification Method:

Protein A purification

CloneNo.:

1A9C3

Recommended Dilutions:

WB 1:5000-1:50000

IF/ICC 1:200-1:800

## Applications

Tested Applications:

WB, IF/ICC, ELISA

Cited Applications:

WB, IHC

Species Specificity:

human

Cited Species:

human, mouse

Positive Controls:

WB : A431 cells, HEK-293 cells, BxPC-3 cells, MCF-7 cells, HepG2 cells

IF/ICC : HepG2 cells,

## Background Information

EPHA2 (Ephrin type-A receptor 2) belongs to the receptor tyrosine kinase (RTK) family, with 16 known receptors and 9 known membrane-bound ligands in all species. Based on the extracellular domain sequence homology, structure, and binding affinity, Eph receptors and their ephrin ligands can be divided into A and B subtypes (PMID: 33962882). EPHA2 contains a conserved N-terminal ligand-bound extracellular domain, a transmembrane domain, and a conserved tyrosine kinase domain (PMID: 8070404).

## Notable Publications

Author	Pubmed ID	Journal	Application
Jing Han	34487720	Arch Biochem Biophys	WB
Xinyue Zhao	36478746	J Oncol	WB
Takuya Owari	33172177	Int J Mol Sci	WB

## Storage

Storage:

Store at -20°C. Stable for one year after shipment.

Storage Buffer:

PBS with 0.02% sodium azide and 50% glycerol pH 7.3.

Aliquoting is unnecessary for -20°C storage

\*\*\* 20ul sizes contain 0.1% BSA

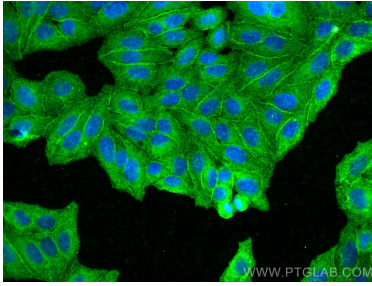
For technical support and original validation data for this product please contact:

T: 1 (888) 4PTGLAB (1-888-478-4522) (toll free in USA), or 1(312) 455-8498 (outside USA)

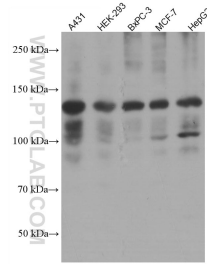
E: [proteintech@ptglab.com](mailto:proteintech@ptglab.com)  
W: [ptglab.com](http://ptglab.com)

This product is exclusively available under Proteintech Group brand and is not available to purchase from any other manufacturer.

## Selected Validation Data



Immunofluorescent analysis of (-20°C Ethanol) fixed HepG2 cells using EPHA2 antibody (66736-1-Ig, Clone: 1A9C3 ) at dilution of 1:400 and Multi-rAb CoraLite ® Plus 488-Goat Anti-Mouse Recombinant Secondary Antibody (H+L) (RGAM002).



Various lysates were subjected to SDS PAGE followed by western blot with 66736-1-Ig (EPHA2 antibody) at dilution of 1:10000 incubated at room temperature for 1.5 hours.