

For Research Use Only

IL-1 beta Monoclonal antibody

Catalog Number: 66737-1-Ig

Featured Product

98 Publications



Basic Information

Catalog Number:

66737-1-Ig

Size:

150ul, Concentration: 2000 ug/ml by Nanodrop;

Source:

Mouse

Isotype:

IgG1

Immunogen Catalog Number:

AG26030

GenBank Accession Number:

BC008678

GeneID (NCBI):

3553

ENSEMBL Gene ID:

ENSG00000125538

UNIPROT ID:

P01584

Full Name:

interleukin 1, beta

Calculated MW:

269 aa, 31 kDa

Observed MW:

35 kDa

Purification Method:

Protein G purification

CloneNo.:

2A1B4

Recommended Dilutions:

WB: 1:1000-1:6000

IHC: 1:50-1:500

Applications

Tested Applications:

WB, IHC, ELISA

Cited Applications:

WB, IHC, IF, IP, ELISA, Cell treatment

Species Specificity:

human

Cited Species:

human, rabbit, bovine

Note-IHC: suggested antigen retrieval with TE buffer pH 9.0; (*) Alternatively, antigen retrieval may be performed with citrate buffer pH 6.0

Positive Controls:

WB : A431 cells, U-87 MG cells

IHC : human lung cancer tissue, human skin cancer tissue

Background Information

Interleukin-1 is a pro-inflammatory cytokine with multiple biological effects. The IL-1 gene family encodes three proteins: IL-1 α , IL-1 β and their naturally occurring inhibitor IL-1RN. IL-1 Beta(IL-1 β), mainly produced by blood monocytes and tissue macrophages, has been implicated in mediating both acute and chronic inflammation. IL-1 β is known to be involved in a variety of cellular activities, including cell proliferation, differentiation and apoptosis. IL-1 β is emerging as a key mediator of carcinogenesis that characterizes host-environment interactions. Human IL-1 β is synthesized as a 31 kDa precursor. To gain activity, the precursor must be cleaved by caspase-1 between Asp116 and Ala117 to yield a 17 kDa mature form.

Notable Publications

Author	Pubmed ID	Journal	Application
Jinghong Zhong	36177510	J Biochem Mol Toxicol	Cell treatment
Yingying Wang	36174863	Int J Biol Macromol	WB
Yuan Gao	34630116	Front Pharmacol	WB,ELISA

Storage

Storage:

Store at -20°C. Stable for one year after shipment.

Storage Buffer:

PBS with 0.02% sodium azide and 50% glycerol, pH7.3

Aliquoting is unnecessary for -20°C storage

*** 20ul sizes contain 0.1% BSA

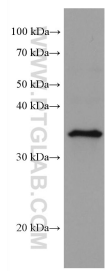
For technical support and original validation data for this product please contact:

T: 1 (888) 4PTGLAB (1-888-478-4522) (toll free in USA), or 1(312) 455-8498 (outside USA)

E: proteintech@ptglab.com
W: ptglab.com

This product is exclusively available under Proteintech Group brand and is not available to purchase from any other manufacturer.

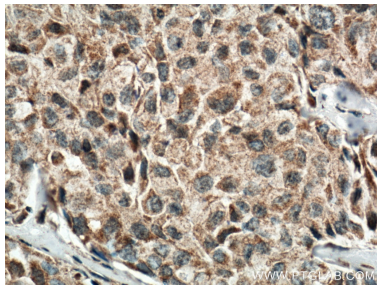
Selected Validation Data



A431 cells were subjected to SDS PAGE followed by western blot with 66737-1-Ig (IL-1 Beta antibody) at dilution of 1:4000 incubated at room temperature for 1.5 hours.



Immunohistochemical analysis of paraffin-embedded human lung cancer tissue slide using 66737-1-Ig (IL1 beta antibody) at dilution of 1:200 (under 10x lens. Heat mediated antigen retrieval with Tris-EDTA buffer (pH 9.0).



Immunohistochemical analysis of paraffin-embedded human lung cancer tissue slide using 66737-1-Ig (IL1 beta antibody) at dilution of 1:200 (under 40x lens. Heat mediated antigen retrieval with Tris-EDTA buffer (pH 9.0).