

For Research Use Only

SRF Monoclonal antibody

Catalog Number: 66742-1-Ig

Featured Product

3 Publications



Basic Information

Catalog Number:

66742-1-Ig

Size:

150ul, Concentration: 1800 ug/ml by 6722
Nanodrop and 1000 ug/ml by Bradford
method using BSA as the standard;

Source:

Mouse

Isotype:

IgG2a

Immunogen Catalog Number:

AG10386

GenBank Accession Number:

BC048211

GeneID (NCBI):

6722

UNIPROT ID:

P11831

Full Name:

serum response factor (c-fos serum
response element-binding
transcription factor)

Calculated MW:

508 aa, 52 kDa

Purification Method:

Protein A purification

CloneNo.:

1G8F4

Recommended Dilutions:

WB 1:2000-1:10000

IF/ICC 1:200-1:800

Applications

Tested Applications:

WB, IF/ICC, ELISA

Cited Applications:

WB

Species Specificity:

human, mouse, rat

Cited Species:

human, mouse

Positive Controls:

WB : HeLa cells, LNCaP cells, MCF-7 cells, RAW 264.7
cells, HEK-293 cells, HepG2 cells, Jurkat cells, SK-BR-3
cells, IMR-32 cells, HSC-T6 cells, NIH/3T3 cells

IF/ICC : HepG2 cells,

Background Information

Serum response factor (SRF) is a transcription factor that binds the serum response element (SRE), a sequence that mediates the transient response of many cellular genes to growth stimulation. SRF is required for cardiac differentiation and maturation due to the role in cardiac cell growth and muscle gene regulation. The full-length SRF protein is 67 kDa and molecular weight of cleaved fragment is 50 kDa and 20 kDa (PMID: 21769134).

Notable Publications

| Author | Pubmed ID | Journal | Application |
|---------------|-----------|------------------------|-------------|
| Ni Zeng | 34786209 | Mol Ther Nucleic Acids | WB |
| Lianling Li | 39190265 | Mol Neurobiol | WB |
| O'Neil Wiggan | 38370738 | bioRxiv | WB |

Storage

Storage:

Store at -20°C. Stable for one year after shipment.

Storage Buffer:

PBS with 0.02% sodium azide and 50% glycerol pH 7.3.

Aliquoting is unnecessary for -20°C storage

*** 20ul sizes contain 0.1% BSA

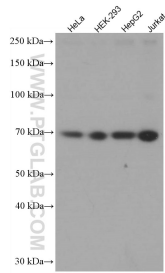
For technical support and original validation data for this product please contact:

T: 1 (888) 4PTGLAB (1-888-478-4522) (toll free
in USA), or 1(312) 455-8498 (outside USA)

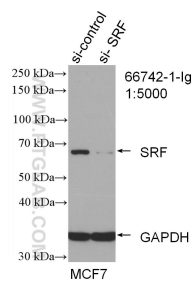
E: proteintech@ptglab.com
W: ptglab.com

This product is exclusively available under Proteintech Group brand and is not available to purchase from any other manufacturer.

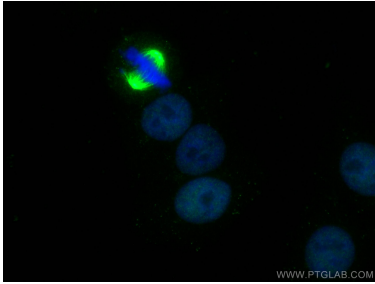
Selected Validation Data



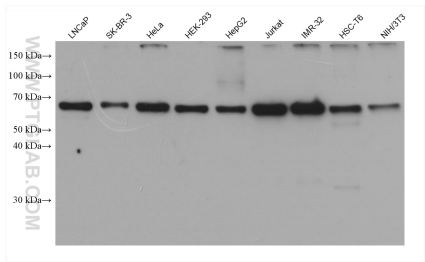
Various lysates were subjected to SDS PAGE followed by western blot with 66742-1-Ig (SRF antibody) at dilution of 1:5000 incubated at room temperature for 1.5 hours.



WB result of SRF antibody (66742-1-Ig; 1:5000; incubated at room temperature for 1.5 hours) with sh-Control and sh-SRF transfected MCF-7 cells.



Immunofluorescent analysis of (4% PFA) fixed HepG2 cells using SRF antibody (66742-1-Ig, Clone: 1G8F4) at dilution of 1:400 and CoraLite®488-Conjugated Goat Anti-Mouse IgG(H+L).



Various lysates were subjected to SDS PAGE followed by western blot with 66742-1-Ig (SRF antibody) at dilution of 1:10000 incubated at room temperature for 1.5 hours.