

For Research Use Only

SRF Monoclonal antibody

Catalog Number: 66742-1-Ig

Featured Product

1 Publications



Basic Information

Catalog Number: 66742-1-Ig	GenBank Accession Number: BC048211	Purification Method: Protein A purification
Size: 150ul , Concentration: 1800 µg/ml by Nanodrop and 1000 µg/ml by Bradford method using BSA as the standard;	GeneID (NCBI): 6722	CloneNo.: 1G8F4
Source: Mouse	Full Name: serum response factor (c-fos serum response element-binding transcription factor)	Recommended Dilutions: WB 1:2000-1:10000 IF 1:200-1:800
Isotype: IgG2a	Calculated MW: 508 aa, 52 kDa	
Immunogen Catalog Number: AG10386		

Applications

Tested Applications:

IF, WB, ELISA

Cited Applications:

WB

Species Specificity:

Human, mouse, rat

Cited Species:

mouse

Positive Controls:

WB : HeLa cells, RAW 264.7 cells, MCF-7 cells, HEK-293 cells, HepG2 cells, Jurkat cells

IF : HepG2 cells,

Background Information

Serum response factor (SRF) is a transcription factor that binds the serum response element (SRE), a sequence that mediates the transient response of many cellular genes to growth stimulation. SRF is required for cardiac differentiation and maturation due to the role in cardiac cell growth and muscle gene regulation. The full-length SRF protein is 67 kDa and molecular weight of cleaved fragment is 50 kDa and 20 kDa (PMID: 21769134).

Notable Publications

Author	Pubmed ID	Journal	Application
Ni Zeng	34786209	Mol Ther Nucleic Acids	WB

Storage

Storage:

Store at -20°C. Stable for one year after shipment.

Storage Buffer:

PBS with 0.02% sodium azide and 50% glycerol pH 7.3.

Aliquoting is unnecessary for -20°C storage

*** 20ul sizes contain 0.1% BSA

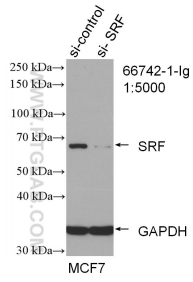
For technical support and original validation data for this product please contact:

T: 1 (888) 4PTGLAB (1-888-478-4522) (toll free
in USA), or 1(312) 455-8498 (outside USA)

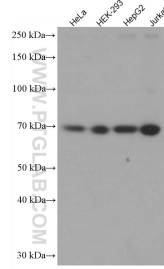
E: proteintech@ptglab.com
W: ptglab.com

This product is exclusively available under Proteintech Group brand and is not available to purchase from any other manufacturer.

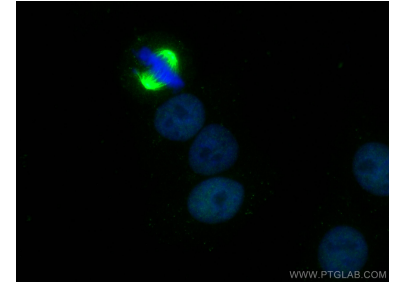
Selected Validation Data



WB result of SRF antibody (66742-1-Ig; 1:5000; incubated at room temperature for 1.5 hours) with sh-Control and sh-SRF transfected MCF-7 cells.



Various lysates were subjected to SDS PAGE followed by western blot with 66742-1-Ig (SRF antibody) at dilution of 1:5000 incubated at room temperature for 1.5 hours.



Immunofluorescent analysis of (4% PFA) fixed HepG2 cells using SRF antibody (66742-1-Ig, Clone: 1G8F4) at dilution of 1:400 and CoraLite®488-Conjugated AffiniPure Goat Anti-Mouse IgG(H+L).