

For Research Use Only

TSH Beta Monoclonal antibody

Catalog Number: 66750-1-Ig



Basic Information

| | | |
|--|--|---|
| Catalog Number: 66750-1-Ig | GenBank Accession Number: BC069298 | Purification Method: Protein A purification |
| Size: 150ul , Concentration: 1300 µg/ml by Nanodrop and 1000 µg/ml by Bradford method using BSA as the standard; | GeneID (NCBI): 7252 | CloneNo.: 2G1H3 |
| Source: Mouse | Full Name: thyroid stimulating hormone, beta | Recommended Dilutions: IHC 1:3000-1:12000 IF 1:200-1:800 |
| Isotype: IgG2b | Calculated MW: 138 aa, 16 kDa | |
| Immunogen Catalog Number: AG27153 | | |

Applications

Tested Applications:

IF, IHC, ELISA

Species Specificity:

Human

Note-IHC: suggested antigen retrieval with TE buffer pH 9.0; (*) Alternatively, antigen retrieval may be performed with citrate buffer pH 6.0

Positive Controls:

IHC : human pituitary tissue,

IF : human pituitary tissue,

Background Information

Storage

Storage:

Store at -20°C. Stable for one year after shipment.

Storage Buffer:

PBS with 0.02% sodium azide and 50% glycerol pH 7.3.

Aliquoting is unnecessary for -20°C storage

*** 20ul sizes contain 0.1% BSA

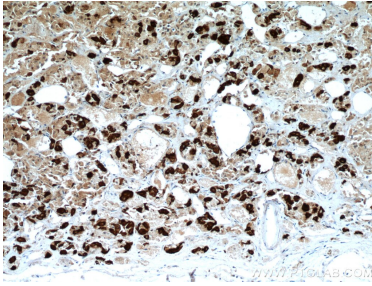
For technical support and original validation data for this product please contact:

T: 1 (888) 4PTGLAB (1-888-478-4522) (toll free in USA), or 1(312) 455-8498 (outside USA)

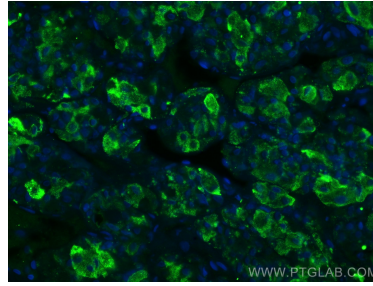
E: proteintech@ptglab.com
W: ptglab.com

This product is exclusively available under Proteintech Group brand and is not available to purchase from any other manufacturer.

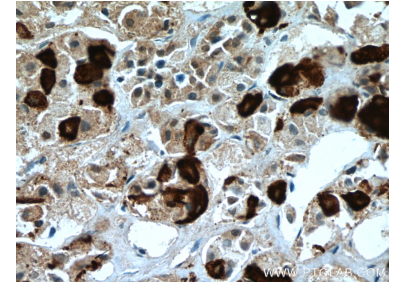
Selected Validation Data



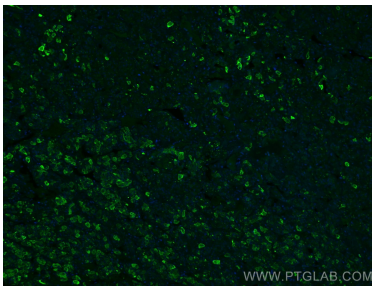
Immunohistochemical analysis of paraffin-embedded human pituitary tissue slide using 66750-1-Ig (TSH beta antibody) at dilution of 1:6000 (under 10x lens. Heat mediated antigen retrieval with Tris-EDTA buffer (pH 9.0).



Immunofluorescent analysis of (4% PFA) fixed human pituitary tissue using TSH Beta antibody (66750-1-Ig, Clone: 2G1H3) at dilution of 1:400 and CoraLite®488-Conjugated AffiniPure Goat Anti-Mouse IgG(H+L).



Immunohistochemical analysis of paraffin-embedded human pituitary tissue slide using 66750-1-Ig (TSH beta antibody) at dilution of 1:6000 (under 40x lens. Heat mediated antigen retrieval with Tris-EDTA buffer (pH 9.0).



Immunofluorescent analysis of (4% PFA) fixed human pituitary tissue using TSH Beta antibody (66750-1-Ig, Clone: 2G1H3) at dilution of 1:400 and CoraLite®488-Conjugated AffiniPure Goat Anti-Mouse IgG(H+L).