

For Research Use Only

# TSH Beta Monoclonal antibody, PBS Only



Catalog Number: 66750-1-PBS

## Basic Information

<b>Catalog Number:</b> 66750-1-PBS	<b>GenBank Accession Number:</b> BC069298	<b>Purification Method:</b> Protein A purification
<b>Size:</b> 100ug, Concentration: 1 mg/ml by Nanodrop;	<b>GeneID (NCBI):</b> 7252	<b>CloneNo.:</b> 2G1H3
<b>Source:</b> Mouse	<b>UNIPROT ID:</b> P01222	
<b>Isotype:</b> IgG2b	<b>Full Name:</b> thyroid stimulating hormone, beta	
<b>Immunogen Catalog Number:</b> AG27153	<b>Calculated MW:</b> 138 aa, 16 kDa	

## Applications

**Tested Applications:**  
IF, IHC, Indirect ELISA

**Species Specificity:**  
Human

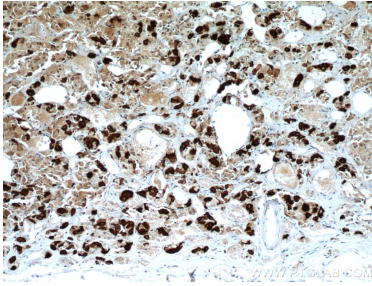
## Storage

**Storage:**  
Store at -80°C.  
**Storage Buffer:**  
PBS Only

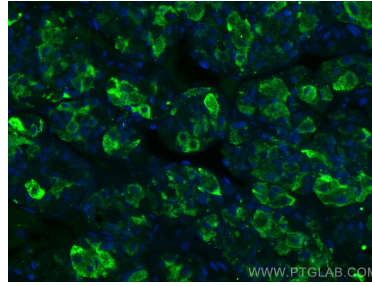
For technical support and original validation data for this product please contact:  
T: 1 (888) 4PTGLAB (1-888-478-4522) (toll free in USA), or 1(312) 455-8498 (outside USA)      E: [proteintech@ptglab.com](mailto:proteintech@ptglab.com)  
W: [ptglab.com](http://ptglab.com)

This product is exclusively available under Proteintech Group brand and is not available to purchase from any other manufacturer.

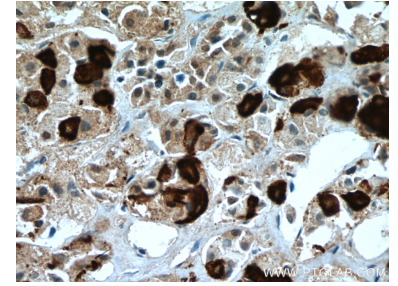
## Selected Validation Data



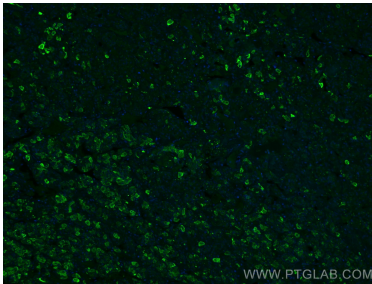
Immunohistochemical analysis of paraffin-embedded human pituitary tissue slide using 66750-1-Ig (TSH beta antibody) at dilution of 1:6000 (under 10x lens. Heat mediated antigen retrieval with Tris-EDTA buffer (pH 9.0). This data was developed using the same antibody clone with 66750-1-PBS in a different storage buffer formulation.



Immunofluorescent analysis of (4% PFA) fixed human pituitary tissue using TSH Beta antibody (66750-1-Ig, Clone: 2G1H3) at dilution of 1:400 and CoraLite®488-Conjugated AffiniPure Goat Anti-Mouse IgG(H+L). This data was developed using the same antibody clone with 66750-1-PBS in a different storage buffer formulation.



Immunohistochemical analysis of paraffin-embedded human pituitary tissue slide using 66750-1-Ig (TSH beta antibody) at dilution of 1:6000 (under 40x lens. Heat mediated antigen retrieval with Tris-EDTA buffer (pH 9.0). This data was developed using the same antibody clone with 66750-1-PBS in a different storage buffer formulation.



Immunofluorescent analysis of (4% PFA) fixed human pituitary tissue using TSH Beta antibody (66750-1-Ig, Clone: 2G1H3) at dilution of 1:400 and CoraLite®488-Conjugated AffiniPure Goat Anti-Mouse IgG(H+L). This data was developed using the same antibody clone with 66750-1-PBS in a different storage buffer formulation.