

For Research Use Only

PLA2G4D Monoclonal antibody

Catalog Number: 66752-1-Ig



Basic Information

Catalog Number: 66752-1-Ig	GenBank Accession Number: BC034571	Purification Method: Protein G purification
Size: 150ul , Concentration: 1800 ug/ml by Nanodrop and 1000 ug/ml by Bradford method using BSA as the standard;	GeneID (NCBI): 283748	CloneNo.: 2E2A10
Source: Mouse	UNIPROT ID: Q86XP0	Recommended Dilutions: WB 1:1000-1:4000 IF/ICC 1:200-1:800
Isotype: IgG1	Full Name: phospholipase A2, group IVD (cytosolic)	
Immunogen Catalog Number: AG4178	Calculated MW: 818 aa, 92 kDa	
	Observed MW: 92 kDa	

Applications

Tested Applications: WB, IF/ICC, ELISA	Positive Controls:
Species Specificity: Human	WB : HepG2 cells, L02 cells, SMMC-7721 cells IF/ICC : HepG2 cells,

Background Information

PLA2G4D(Cytosolic phospholipase A2 delta) belongs to the phospholipase A2 enzyme family, catalyzes the hydrolysis of glycerophospholipids at the sn-2 position and then liberate free fatty acids and lysophospholipids. PLA2G4D expression is specifically upregulated in the upper epidermis of patients with inflammatory skin diseases(PMID:14709560).

Storage

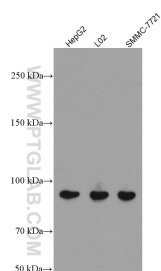
Storage:
Store at -20°C. Stable for one year after shipment.
Storage Buffer:
PBS with 0.02% sodium azide and 50% glycerol pH 7.3.
Aliquoting is unnecessary for -20°C storage

*** 20ul sizes contain 0.1% BSA

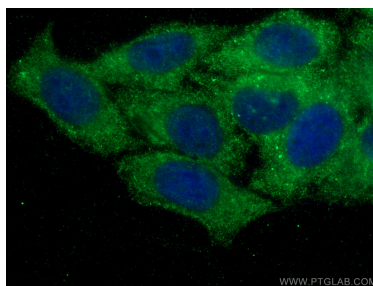
For technical support and original validation data for this product please contact:
T: 1 (888) 4PTGLAB (1-888-478-4522) (toll free in USA), or 1(312) 455-8498 (outside USA)
E: proteintech@ptglab.com
W: ptglab.com

This product is exclusively available under Proteintech Group brand and is not available to purchase from any other manufacturer.

Selected Validation Data



Various lysates were subjected to SDS PAGE followed by western blot with 66752-1-Ig (PLA2G4D antibody) at dilution of 1:3000 incubated at room temperature for 1.5 hours.



Immunofluorescent analysis of (-20°C Ethanol) fixed HepG2 cells using PLA2G4D antibody (66752-1-Ig, Clone: 2E2A10) at dilution of 1:400 and CoraLite®488-Conjugated AffiniPure Goat Anti-Mouse IgG(H+L).