

For Research Use Only

# PLA2G4D Monoclonal antibody

Catalog Number: 66752-1-Ig



## Basic Information

<b>Catalog Number:</b> 66752-1-Ig	<b>GenBank Accession Number:</b> BC034571	<b>Purification Method:</b> Protein G purification
<b>Size:</b> 150ul , Concentration: 1800 µg/ml by Nanodrop and 1000 µg/ml by Bradford method using BSA as the standard;	<b>GeneID (NCBI):</b> 283748	<b>CloneNo.:</b> 2E2A10
<b>Source:</b> Mouse	<b>Full Name:</b> phospholipase A2, group IVD (cytosolic)	<b>Recommended Dilutions:</b> WB 1:1000-1:4000 IF 1:200-1:800
<b>Isotype:</b> IgG1	<b>Calculated MW:</b> 818 aa, 92 kDa	
<b>Immunogen Catalog Number:</b> AG4178	<b>Observed MW:</b> 92 kDa	

## Applications

<b>Tested Applications:</b> IF, WB, ELISA	<b>Positive Controls:</b>
<b>Species Specificity:</b> Human	<b>WB :</b> HepG2 cells, L02 cells, SMMC-7721 cells <b>IF :</b> HepG2 cells,

## Background Information

PLA2G4D(Cytosolic phospholipase A2 delta) belongs to the phospholipase A2 enzyme family, catalyzes the hydrolysis of glycerophospholipids at the sn-2 position and then liberate free fatty acids and lysophospholipids. PLA2G4D expression is specifically upregulated in the upper epidermis of patients with inflammatory skin diseases(PMID:14709560).

## Storage

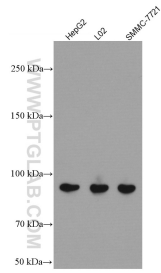
**Storage:**  
Store at -20°C. Stable for one year after shipment.  
**Storage Buffer:**  
PBS with 0.02% sodium azide and 50% glycerol pH 7.3.  
Aliquoting is unnecessary for -20°C storage

\*\*\* 20ul sizes contain 0.1% BSA

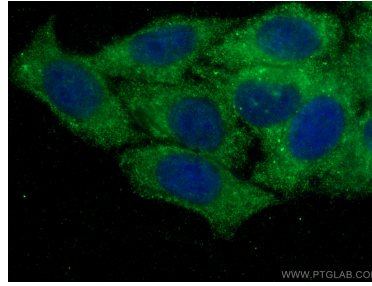
For technical support and original validation data for this product please contact:  
T: 1 (888) 4PTGLAB (1-888-478-4522) (toll free in USA), or 1(312) 455-8498 (outside USA)  
E: proteintech@ptglab.com  
W: ptglab.com

This product is exclusively available under Proteintech Group brand and is not available to purchase from any other manufacturer.

## Selected Validation Data



Various lysates were subjected to SDS PAGE followed by western blot with 66752-1-Ig (PLA2G4D antibody) at dilution of 1:3000 incubated at room temperature for 1.5 hours.



Immunofluorescent analysis of (-20°C Ethanol) fixed HepG2 cells using PLA2G4D antibody (66752-1-Ig, Clone: 2E2A10) at dilution of 1:400 and CoraLite®488-Conjugated AffiniPure Goat Anti-Mouse IgG(H+L).