

For Research Use Only

PLA2G4D Monoclonal antibody, PBS Only



Catalog Number: 66752-1-PBS

Basic Information

Catalog Number: 66752-1-PBS	GenBank Accession Number: BC034571	Purification Method: Protein G purification
Size: 100ug , Concentration: 1 mg/ml by Nanodrop;	GeneID (NCBI): 283748	CloneNo.: 2E2A10
Source: Mouse	UNIPROT ID: Q86XP0	
Isotype: IgG1	Full Name: phospholipase A2, group IVD (cytosolic)	
Immunogen Catalog Number: AG4178	Calculated MW: 818 aa, 92 kDa	
	Observed MW: 92 kDa	

Applications

Tested Applications:
WB, IF, Indirect ELISA

Species Specificity:
Human

Background Information

PLA2G4D(Cytosolic phospholipase A2 delta) belongs to the phospholipase A2 enzyme family, catalyzes the hydrolysis of glycerophospholipids at the sn-2 position and then liberate free fatty acids and lysophospholipids. PLA2G4D expression is specifically upregulated in the upper epidermis of patients with inflammatory skin diseases(PMID:14709560).

Storage

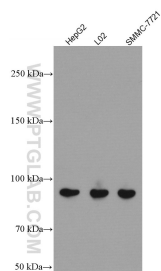
Storage:
Store at -80°C.

Storage Buffer:
PBS Only

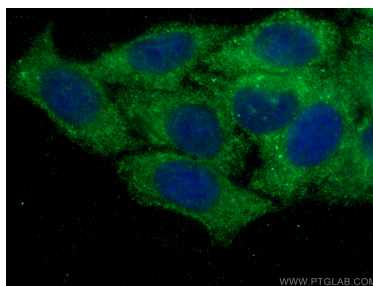
For technical support and original validation data for this product please contact:
T: 1 (888) 4PTGLAB (1-888-478-4522) (toll free in USA), or 1(312) 455-8498 (outside USA)
E: proteintech@ptglab.com
W: ptglab.com

This product is exclusively available under Proteintech Group brand and is not available to purchase from any other manufacturer.

Selected Validation Data



Various lysates were subjected to SDS PAGE followed by western blot with 66752-1-Ig (PLA2G4D antibody) at dilution of 1:3000 incubated at room temperature for 1.5 hours. This data was developed using the same antibody clone with 66752-1-PBS in a different storage buffer formulation.



Immunofluorescent analysis of (-20°C Ethanol) fixed HepG2 cells using PLA2G4D antibody (66752-1-Ig, Clone: 2E2A10) at dilution of 1:400 and CoraLite®488-Conjugated AffiniPure Goat Anti-Mouse IgG(H+L). This data was developed using the same antibody clone with 66752-1-PBS in a different storage buffer formulation.