

For Research Use Only

PSMB8 Monoclonal antibody

Catalog Number: 66759-1-Ig 1 Publications



Basic Information

Catalog Number: 66759-1-Ig	GenBank Accession Number: BC001114	Purification Method: Protein A purification
Size: 150ul, Concentration: 1600 ug/ml by Nanodrop and 1000 ug/ml by Bradford method using BSA as the standard;	GeneID (NCBI): 5696	CloneNo.: 2A5B6
Source: Mouse	UNIPROT ID: P28062	Recommended Dilutions: WB 1:5000-1:50000 IHC 1:500-1:2000 IF-P 1:200-1:800 IF/ICC 1:400-1:1600
Isotype: IgG1	Full Name: proteasome (prosome, macropain) subunit, beta type, 8 (large multifunctional peptidase 7)	
Immunogen Catalog Number: AG6780	Calculated MW: 30 kDa	
	Observed MW: 23 kDa	

Applications

Tested Applications: WB, IHC, IF/ICC, IF-P, ELISA	Positive Controls: WB: Jurkat cells, HSC-T6 cells, Raji cells, Ramos cells
Species Specificity: human, mouse, rat	IHC: human lung cancer tissue, human liver cancer tissue, human oesophagus cancer tissue, mouse colon tissue, mouse stomach tissue, rat colon tissue, rat stomach tissue
Note-IHC: suggested antigen retrieval with TE buffer pH 9.0; (*) Alternatively, antigen retrieval may be performed with citrate buffer pH 6.0	IF-P: human lung cancer tissue, human liver cancer tissue
	IF/ICC: HepG2 cells, HeLa cells

Background Information

PSMB8 (Proteasome subunit beta type-8) is also named as LMP7, PSMB5i, RING10, Y2 and belongs to the peptidase T1B family. The gene encodes the chymotrypsin-like catalytic subunit of the immunoproteasome (PMID: 19525961). PSMB8 has a role in controlling pathogenic immune responses and may be a target in autoimmune disorders. Its prosequence is not essential for incorporation of PSMB8 into the maturing proteasome, but it increased the efficiency of PSMB8 incorporation and proteasome maturation (PMID: 10926487). The pro-PSMB8 is a 276aa protein with the molecular mass of 30 kDa, and the mature form is about 23kDa due to the 72aa propeptide cleaved. Defects in PSMB8 are the cause of Nakajo syndrome (NKJO).

Notable Publications

Author	Pubmed ID	Journal	Application
Sheng-Wen Chen	39786996	Cell Rep	

Storage

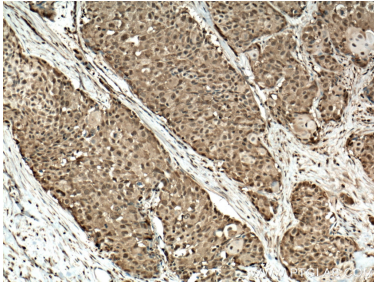
Storage:
Store at -20°C. Stable for one year after shipment.
Storage Buffer:
PBS with 0.02% sodium azide and 50% glycerol pH 7.3.
Aliquoting is unnecessary for -20°C storage

*** 20ul sizes contain 0.1% BSA

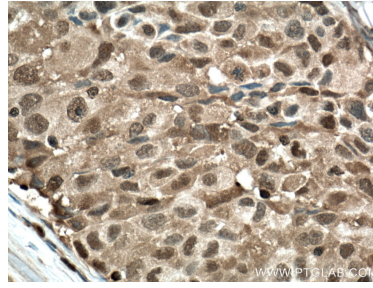
For technical support and original validation data for this product please contact:
T: 1 (888) 4PTGLAB (1-888-478-4522) (toll free in USA), or 1(312) 455-8498 (outside USA)
E: proteintech@ptglab.com
W: ptglab.com

This product is exclusively available under Proteintech Group brand and is not available to purchase from any other manufacturer.

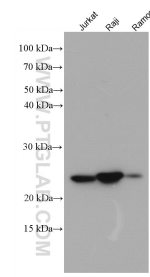
Selected Validation Data



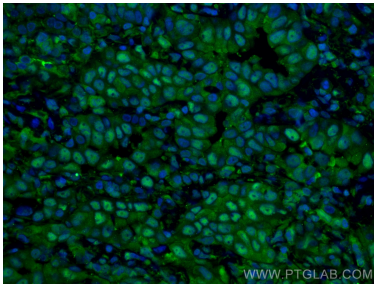
Immunohistochemical analysis of paraffin-embedded human lung cancer tissue slide using 66759-1-Ig (PSMB8 antibody) at dilution of 1:1000 (under 10x lens. Heat mediated antigen retrieval with Tris-EDTA buffer (pH 9.0).



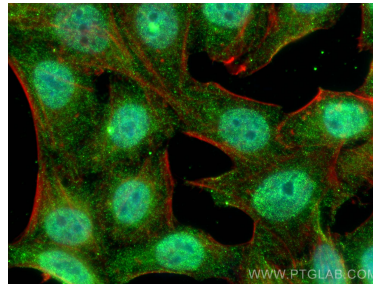
Immunohistochemical analysis of paraffin-embedded human lung cancer tissue slide using 66759-1-Ig (PSMB8 antibody) at dilution of 1:1000 (under 40x lens. Heat mediated antigen retrieval with Tris-EDTA buffer (pH 9.0).



Various lysates were subjected to SDS PAGE followed by western blot with 66759-1-Ig (PSMB8 antibody) at dilution of 1:10000 incubated at room temperature for 1.5 hours.



Immunofluorescent analysis of (4% PFA) fixed human lung cancer tissue using PSMB8 antibody (66759-1-Ig, Clone: 2A5B6) at dilution of 1:400 and CoraLite® 488-Conjugated Goat Anti-Mouse IgG(H+L).



Immunofluorescent analysis of (4% PFA) fixed HepG2 cells using PSMB8 antibody (66759-1-Ig, Clone: 2A5B6) at dilution of 1:800 and Multi-rAb CoraLite® Plus 488-Goat Anti-Mouse Recombinant Secondary Antibody (H+L) (RGAM002), CL594-phalloidin (red).