

For Research Use Only

BACH1 Monoclonal antibody

Catalog Number: 66762-1-Ig

Featured Product

3 Publications



Basic Information

Catalog Number: 66762-1-Ig	GenBank Accession Number: BC063307	Purification Method: Protein A purification
Size: 150ul, Concentration: 1000 ug/ml by Nanodrop;	GeneID (NCBI): 571	CloneNo.: 2D12A4
Source: Mouse	ENSEMBL Gene ID: ENSG00000156273	Recommended Dilutions: WB 1:1000-1:6000 IHC 1:50-1:500
Isotype: IgG1	UNIPROT ID: O14867	
Immunogen Catalog Number: AG6011	Full Name: BTB and CNC homology 1, basic leucine zipper transcription factor 1	
	Calculated MW: 82 kDa	
	Observed MW: 100-110 kDa	

Applications

Tested Applications: WB, IHC, ELISA	Positive Controls: WB : HeLa cells, HEK-293 cells, HSC-T6 cells, Jurkat cells, K-562 cells, Raji cells IHC : human lung cancer tissue,
Cited Applications: WB, IF	
Species Specificity: human, rat	
Cited Species: human, mouse	
Note-IHC: suggested antigen retrieval with TE buffer pH 9.0; (*) Alternatively, antigen retrieval may be performed with citrate buffer pH 6.0	

Background Information

BTB and CNC homology 1, basic leucine zipper transcription factor 1(BACH1) is a heme-regulated transcriptional regulator that acts as a repressor or activator and a member of the AP-2 superfamily. MafK belongs to the small Maf family that can function as transcriptional activators or repressors depending on the proteins with which they form heterodimers. BACH1 has crucial roles in both stress responses and transformation by H-RasV12. The molecular weight of expected mobility Bach1 is 100-110 kDa.

Notable Publications

Author	Pubmed ID	Journal	Application
Kenshiro Takemoto	36178067	Cancer Sci	WB
Kristen M Rehl	37666666	Life Sci Alliance	WB
Hao Qin	37405911	Cell Rep	WB,IF

Storage

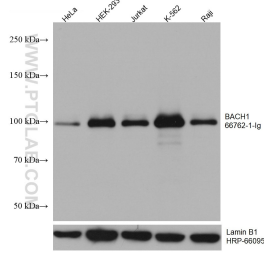
Storage:
Store at -20°C. Stable for one year after shipment.
Storage Buffer:
PBS with 0.02% sodium azide and 50% glycerol
Aliquoting is unnecessary for -20°C storage

*** 20ul sizes contain 0.1% BSA

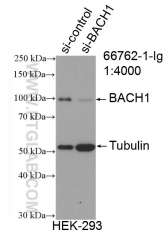
For technical support and original validation data for this product please contact:
T: 1 (888) 4PTGLAB (1-888-478-4522) (toll free in USA), or 1(312) 455-8498 (outside USA)
E: proteintech@ptglab.com
W: ptglab.com

This product is exclusively available under Proteintech Group brand and is not available to purchase from any other manufacturer.

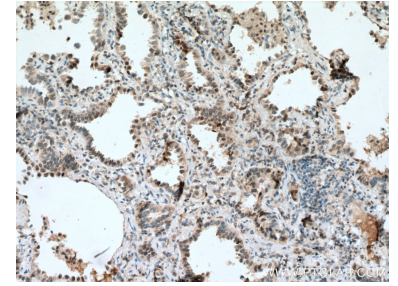
Selected Validation Data



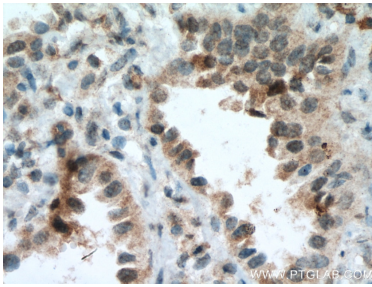
Various lysates were subjected to SDS PAGE followed by western blot with 66762-1-Ig (BACH1 antibody) at dilution of 1:3000 incubated at room temperature for 1.5 hours. The membrane was stripped and reblotted with HRP-conjugated Lamin B1 Monoclonal antibody (HRP-66095) as loading control.



WB result of BACH1 antibody (66762-1-Ig; 1:4000; incubated at room temperature for 1.5 hours) with sh-Control and sh-BACH1 transfected HEK-293 cells.



Immunohistochemical analysis of paraffin-embedded human lung cancer tissue slide using 66762-1-Ig (BACH1 antibody) at dilution of 1:100 (under 10x lens. Heat mediated antigen retrieval with Tris-EDTA buffer (pH 9.0).



Immunohistochemical analysis of paraffin-embedded human lung cancer tissue slide using 66762-1-Ig (BACH1 antibody) at dilution of 1:100 (under 40x lens. Heat mediated antigen retrieval with Tris-EDTA buffer (pH 9.0).