

For Research Use Only

# CRM1 Monoclonal antibody

Catalog Number: 66763-1-Ig

Featured Product

11 Publications



## Basic Information

### Catalog Number:

66763-1-Ig

### GenBank Accession Number:

BC032847

### Purification Method:

Protein A purification

### Size:

150ul, Concentration: 2285 ug/ml by Nanodrop and 1000 ug/ml by Bradford method using BSA as the standard;

### GeneID (NCBI):

7514

### CloneNo.:

2D3B6

### Source:

Mouse

### UNIPROT ID:

O14980

### Recommended Dilutions:

WB 1:5000-1:50000

IHC 1:500-1:2000

### Isotype:

IgG1

### Full Name:

exportin 1 (CRM1 homolog, yeast)

### Calculated MW:

1071 aa, 123 kDa

### Immunogen Catalog Number:

AG27337

### Observed MW:

100-110 kDa

## Applications

### Tested Applications:

WB, IHC, ELISA

### Positive Controls:

WB : A431 cells, HeLa cells, HepG2 cells, Jurkat cells, K-562 cells, HSC-T6 cells, PC-12 cells, NIH/3T3 cells, RAW 264.7 cells, HEK-293 cells

### Cited Applications:

WB, IHC, IP

IHC : human cervical cancer tissue,

### Species Specificity:

human, mouse, rat

### Cited Species:

human, mouse, rat

**Note-IHC: suggested antigen retrieval with TE buffer pH 9.0; (\*) Alternatively, antigen retrieval may be performed with citrate buffer pH 6.0**

## Background Information

CRM1 (chromosome region maintenance 1, also known as exportin-1 or XPO1), a member of the karyopherin  $\beta$  family of transport receptors, is an important nuclear export receptor recognizing proteins bearing a leucine-rich nuclear export signal (PMID: 9323133). CRM1 is the major receptor for the export of proteins out of the nucleus and is also required for transport of many RNAs (PMID: 17317185). In addition to nuclear export, CRM1 also plays a role in centrosome duplication and spindle assembly (PMID: 22773955). Elevated CRM1 expression has been reported in several cancers, which implicates CRM1 as a potential anti-cancer drug target (PMID: 22677130; 21683812).

## Notable Publications

Author	Pubmed ID	Journal	Application
Xiaogang Chen	32467578	Cell Death Dis	WB
Jianning Xu	31326389	Exp Cell Res	WB
Mu Zhang	33569632	Diabetologia	WB

## Storage

### Storage:

Store at -20°C. Stable for one year after shipment.

### Storage Buffer:

PBS with 0.02% sodium azide and 50% glycerol, pH7.3

Aliquoting is unnecessary for -20°C storage

\*\*\* 20ul sizes contain 0.1% BSA

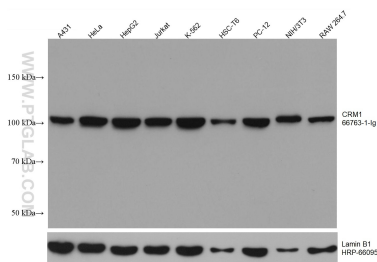
For technical support and original validation data for this product please contact:

T: 1 (888) 4PTGLAB (1-888-478-4522) (toll free in USA), or 1(312) 455-8498 (outside USA)

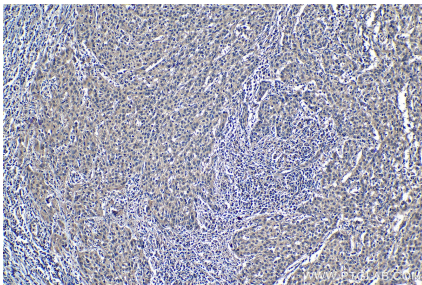
E: [proteintech@ptglab.com](mailto:proteintech@ptglab.com)  
W: [ptglab.com](http://ptglab.com)

This product is exclusively available under Proteintech Group brand and is not available to purchase from any other manufacturer.

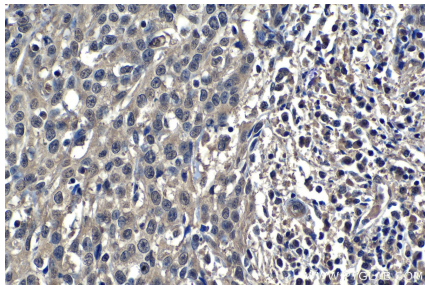
## Selected Validation Data



Various lysates were subjected to SDS PAGE followed by western blot with 66763-1-Ig (CRM1 antibody) at dilution of 1:10000 incubated at room temperature for 1.5 hours. The membrane was stripped and reblotted with HRP-conjugated Lamin B1 Monoclonal antibody (HRP-66095) as loading control.



Immunohistochemical analysis of paraffin-embedded human cervical cancer tissue slide using 66763-1-Ig (CRM1 antibody) at dilution of 1:1000 (under 10x lens). Heat mediated antigen retrieval with Tris-EDTA buffer (pH 9.0).



Immunohistochemical analysis of paraffin-embedded human cervical cancer tissue slide using 66763-1-Ig (CRM1 antibody) at dilution of 1:1000 (under 40x lens). Heat mediated antigen retrieval with Tris-EDTA buffer (pH 9.0).