

For Research Use Only

CRM1 Monoclonal antibody

Catalog Number: 66763-1-Ig

Featured Product

11 Publications



Basic Information

Catalog Number:

66763-1-Ig

GenBank Accession Number:

BC032847

Purification Method:

Protein A purification

Size:

150ul, Concentration: 2285 ug/ml by Nanodrop and 1000 ug/ml by Bradford method using BSA as the standard;

GeneID (NCBI):

7514

CloneNo.:

2D3B6

Source:

Mouse

UNIPROT ID:

O14980

Recommended Dilutions:

WB 1:5000-1:50000

IHC 1:500-1:2000

Isotype:

IgG1

Full Name:

exportin 1 (CRM1 homolog, yeast)

Calculated MW:

1071 aa, 123 kDa

Immunogen Catalog Number:

AG27337

Observed MW:

100-110 kDa

Applications

Tested Applications:

WB, IHC, ELISA

Cited Applications:

WB, IHC, IP

Species Specificity:

human, mouse, rat

Cited Species:

human, mouse, rat

Note-IHC: suggested antigen retrieval with TE buffer pH 9.0; (*) Alternatively, antigen retrieval may be performed with citrate buffer pH 6.0

Positive Controls:

WB : A431 cells, HeLa cells, HepG2 cells, Jurkat cells, K-562 cells, HSC-T6 cells, PC-12 cells, NIH/3T3 cells, RAW 264.7 cells, HEK-293 cells

IHC : human cervical cancer tissue,

Background Information

CRM1 (chromosome region maintenance 1, also known as exportin-1 or XPO1), a member of the karyopherin β family of transport receptors, is an important nuclear export receptor recognizing proteins bearing a leucine-rich nuclear export signal (PMID: 9323133). CRM1 is the major receptor for the export of proteins out of the nucleus and is also required for transport of many RNAs (PMID: 17317185). In addition to nuclear export, CRM1 also plays a role in centrosome duplication and spindle assembly (PMID: 22773955). Elevated CRM1 expression has been reported in several cancers, which implicates CRM1 as a potential anti-cancer drug target (PMID: 22677130; 21683812).

Notable Publications

Author	Pubmed ID	Journal	Application
Xiaogang Chen	32467578	Cell Death Dis	WB
Jianning Xu	31326389	Exp Cell Res	WB
Mu Zhang	33569632	Diabetologia	WB

Storage

Storage:

Store at -20°C. Stable for one year after shipment.

Storage Buffer:

PBS with 0.02% sodium azide and 50% glycerol, pH7.3

Aliquoting is unnecessary for -20°C storage

*** 20ul sizes contain 0.1% BSA

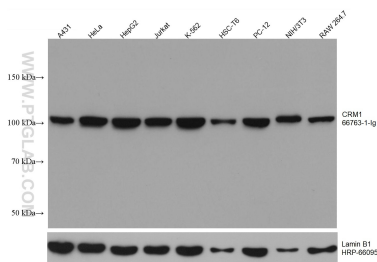
For technical support and original validation data for this product please contact:

T: 1 (888) 4PTGLAB (1-888-478-4522) (toll free in USA), or 1(312) 455-8498 (outside USA)

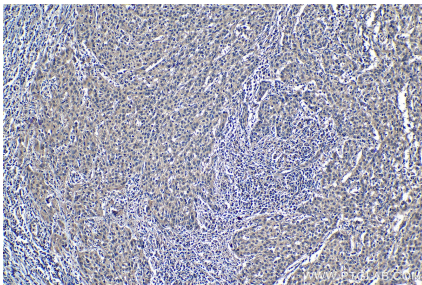
E: proteintech@ptglab.com
W: ptglab.com

This product is exclusively available under Proteintech Group brand and is not available to purchase from any other manufacturer.

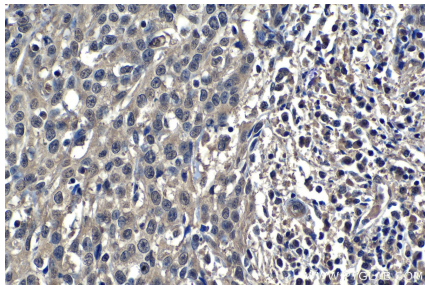
Selected Validation Data



Various lysates were subjected to SDS PAGE followed by western blot with 66763-1-Ig (CRM1 antibody) at dilution of 1:10000 incubated at room temperature for 1.5 hours. The membrane was stripped and reblotted with HRP-conjugated Lamin B1 Monoclonal antibody (HRP-66095) as loading control.



Immunohistochemical analysis of paraffin-embedded human cervical cancer tissue slide using 66763-1-Ig (CRM1 antibody) at dilution of 1:1000 (under 10x lens). Heat mediated antigen retrieval with Tris-EDTA buffer (pH 9.0).



Immunohistochemical analysis of paraffin-embedded human cervical cancer tissue slide using 66763-1-Ig (CRM1 antibody) at dilution of 1:1000 (under 40x lens). Heat mediated antigen retrieval with Tris-EDTA buffer (pH 9.0).