

For Research Use Only

PYGL Monoclonal antibody

Catalog Number: 66769-1-Ig

Featured Product

1 Publications



Basic Information

Catalog Number:

66769-1-Ig

GenBank Accession Number:

BC009895

Purification Method:

Protein G purification

Size:

150ul, Concentration: 1400 ug/ml by 5836

GeneID (NCBI):

5836

CloneNo.:

1G12D8

Nanodrop and 1000 ug/ml by Bradford method using BSA as the standard;

UNIPROT ID:

P06737

Recommended Dilutions:

WB 1:2000-1:10000

IF/ICC 1:400-1:1600

Source:

Mouse

Full Name:

phosphorylase, glycogen, liver

Isotype:

IgG1

Calculated MW:

846 aa, 97 kDa

Immunogen Catalog Number:

AG8550

Observed MW:

97 kDa

Applications

Tested Applications:

WB, IF/ICC, ELISA

Positive Controls:

WB : HSC-T6 cells, HeLa cells, HepG2 cells, L02 cells,

SMMC-7721 cells

Cited Applications:

WB

IF/ICC : U-251 cells,

Species Specificity:

human, rat

Cited Species:

human

Background Information

Glycogen phosphorylase L (PYGL) is one of the gene related to hypoxia metabolism and was found to be up-regulated in head and neck squamous cell carcinomas (HNSCCs) and breast cancers. Glycogen synthases (GSs) and glycogen phosphorylases (GPs) catalyze the key steps of glycogen synthesis and breakdown, while glycogen phosphorylase has three isoforms: PYGM (muscle), PYGL (liver), and PYGB (brain) (PMID: 37063425, 9529348). High PYGL expression plays an independent role in predicting the poor prognosis of glioma patients (PMID: 34177761).

Notable Publications

| Author | Pubmed ID | Journal | Application |
|------------|-----------|-------------------|-------------|
| Tingyu Cao | 39525037 | Transl Cancer Res | WB |

Storage

Storage:

Store at -20°C. Stable for one year after shipment.

Storage Buffer:

PBS with 0.02% sodium azide and 50% glycerol, pH7.3

Aliquoting is unnecessary for -20°C storage

*** 20ul sizes contain 0.1% BSA

For technical support and original validation data for this product please contact:

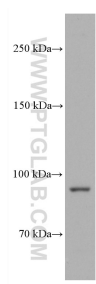
T: 1 (888) 4PTGLAB (1-888-478-4522) (toll free in USA), or 1(312) 455-8498 (outside USA)

E: proteintech@ptglab.com

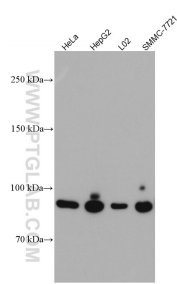
W: ptglab.com

This product is exclusively available under Proteintech Group brand and is not available to purchase from any other manufacturer.

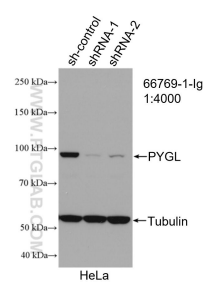
Selected Validation Data



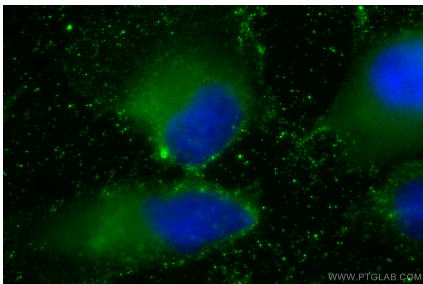
HSC-T6 cells were subjected to SDS PAGE followed by western blot with 66769-1-Ig (PYGL antibody) at dilution of 1:5000 incubated at room temperature for 1.5 hours.



Various lysates were subjected to SDS PAGE followed by western blot with 66769-1-Ig (PYGL antibody) at dilution of 1:5000 incubated at room temperature for 1.5 hours.



WB result of PYGL antibody (66769-1-Ig; 1:4000; incubated at room temperature for 1.5 hours) with sh-Control and sh-PYGL transfected HeLa cells.



Immunofluorescent analysis of (-20°C Ethanol) fixed U-251 cells using PYGL antibody (66769-1-Ig, Clone: 1G12D8) at dilution of 1:800 and CoraLite®488-Conjugated AffiniPure Goat Anti-Mouse IgG(H+L).