

For Research Use Only

SLC25A1 Monoclonal antibody

Catalog Number: 66771-1-Ig **1 Publications**



Basic Information

Catalog Number: 66771-1-Ig	GenBank Accession Number: BC004980	Purification Method: Protein A purification
Size: 150ul , Concentration: 1600 ug/ml by Nanodrop and 1000 ug/ml by Bradford method using BSA as the standard;	GeneID (NCBI): 6576	CloneNo.: 1F11A3
Source: Mouse	UNIPROT ID: P53007	Recommended Dilutions: WB 1:5000-1:50000
Isotype: IgG3	Full Name: solute carrier family 25 (mitochondrial carrier; citrate transporter), member 1	
Immunogen Catalog Number: AG7520	Calculated MW: 34 kDa	
	Observed MW: 34 kDa	

Applications

Tested Applications: WB, ELISA	Positive Controls: WB : HEK-293 cells, Jurkat cells, HSC-T6 cells, NIH/3T3 cells, NK-92 cells
Cited Applications: WB, IP	
Species Specificity: Human, Mouse, Rat	
Cited Species: mouse	

Background Information

SLC25A1, also known as CIC or CTP, is a mitochondrial citrate transporter that exports citrate from the mitochondria to the cytosol. SLC25A1 is highly expressed in several tumor types. Recently it has been identified as a novel transcriptional target of mutant p53 and a negative tumor prognostic marker. In addition, defects in SLC25A1 has been found as a cause of combined D-2- and L-2-hydroxyglutaric aciduria. This antibody specifically recognized the endogenous SLC25A1; no protein was detected in cells from subjects containing two alleles with truncating mutations with this antibody. (24681808, 23561848)

Notable Publications

Author	Pubmed ID	Journal	Application
Weiwei Liu	35585086	Nat Commun	WB,IP

Storage

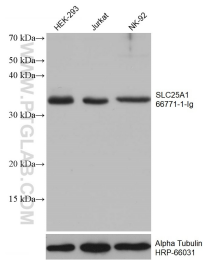
Storage:
Store at -20°C. Stable for one year after shipment.
Storage Buffer:
PBS with 0.02% sodium azide and 50% glycerol pH 7.3.
Aliquoting is unnecessary for -20°C storage

*** 20ul sizes contain 0.1% BSA

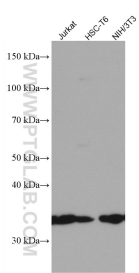
For technical support and original validation data for this product please contact:
T: 1 (888) 4PTGLAB (1-888-478-4522) (toll free in USA), or 1(312) 455-8498 (outside USA)
E: proteintech@ptglab.com
W: ptglab.com

This product is exclusively available under Proteintech Group brand and is not available to purchase from any other manufacturer.

Selected Validation Data



Various lysates were subjected to SDS PAGE followed by western blot with 66771-1-Ig (SLC25A1 antibody) at dilution of 1:10000 incubated at room temperature for 1.5 hours. The membrane was stripped and reblotted with HRP-conjugated Alpha Tubulin Monoclonal antibody (HRP-66031) as loading control.



Various lysates were subjected to SDS PAGE followed by western blot with 66771-1-Ig (SLC25A1 antibody) at dilution of 1:3000 incubated at room temperature for 1.5 hours.