

For Research Use Only

# SSTR5 Monoclonal antibody

Catalog Number: 66772-1-Ig **5 Publications**



## Basic Information

<b>Catalog Number:</b> 66772-1-Ig	<b>GenBank Accession Number:</b> BC146576	<b>Purification Method:</b> Protein G purification
<b>Size:</b> 150ul, Concentration: 1800 ug/ml by Nanodrop and 1000 ug/ml by Bradford method using BSA as the standard;	<b>GeneID (NCBI):</b> 6755	<b>CloneNo.:</b> 2B10D8
<b>Source:</b> Mouse	<b>UNIPROT ID:</b> P35346	<b>Recommended Dilutions:</b> WB 1:1000-1:6000 IF-P 1:200-1:800
<b>Isotype:</b> IgG1	<b>Full Name:</b> somatostatin receptor 5	
<b>Immunogen Catalog Number:</b> AG18615	<b>Calculated MW:</b> 364 aa, 39 kDa	
	<b>Observed MW:</b> 41 kDa	

## Applications

<b>Tested Applications:</b> WB, IF-P, ELISA	<b>Positive Controls:</b>
<b>Cited Applications:</b> WB, IF, CoIP	<b>WB :</b> HSC-T6 cells, HeLa cells, HEK-293 cells, HepG2 cells, NIH/3T3 cells, Neuro-2a cells
<b>Species Specificity:</b> Human, Mouse, Rat	<b>IF-P :</b> mouse kidney tissue,
<b>Cited Species:</b> human, mouse, rat	

## Background Information

Somatostatin is a widely distributed peptide with a broad range of biological actions. Two biological forms of somatostatin exist: somatostatin-14 and -28. Somatostatin receptors (SSTR1, 2A and B, 3, 4 and 5) belong to the G protein coupled receptor family and have a wide expression pattern in both normal tissues and solid tumors (PMID: 23872332). SSTR5 has greater affinity for somatostatin-28 than somatostatin-14 (PMID: 8373420).

## Notable Publications

Author	Pubmed ID	Journal	Application
Kazunori Kageyama	32963176	Endocr J	WB
Ping Ma	34710756	Phytomedicine	WB
Donatella Treppiedi	35992099	Front Endocrinol (Lausanne)	IF

## Storage

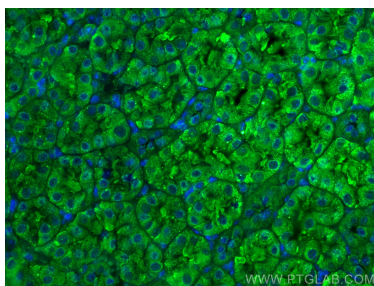
**Storage:**  
Store at -20°C. Stable for one year after shipment.  
**Storage Buffer:**  
PBS with 0.02% sodium azide and 50% glycerol, pH7.3  
Aliquoting is unnecessary for -20°C storage

\*\*\* 20ul sizes contain 0.1% BSA

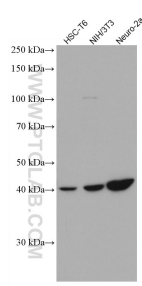
For technical support and original validation data for this product please contact:  
T: 1 (888) 4PTGLAB (1-888-478-4522) (toll free in USA), or 1(312) 455-8498 (outside USA)  
E: proteintech@ptglab.com  
W: ptglab.com

This product is exclusively available under Proteintech Group brand and is not available to purchase from any other manufacturer.

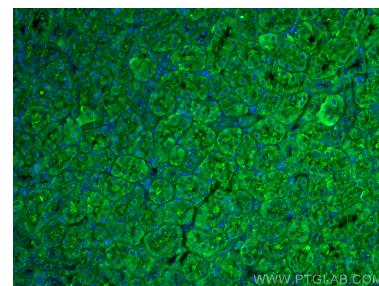
## Selected Validation Data



Immunofluorescent analysis of (4% PFA) fixed mouse kidney tissue using SSTR5 antibody (66772-1-Ig, Clone: 2B10D8 ) at dilution of 1:400 and CoraLite®488-Conjugated Goat Anti-Mouse IgG(H+L).



Various lysates were subjected to SDS PAGE followed by western blot with 66772-1-Ig (SSTR5 antibody) at dilution of 1:3000 incubated at room temperature for 1.5 hours.



Immunofluorescent analysis of (4% PFA) fixed mouse kidney tissue using SSTR5 antibody (66772-1-Ig, Clone: 2B10D8 ) at dilution of 1:400 and CoraLite®488-Conjugated Goat Anti-Mouse IgG(H+L).