

For Research Use Only

# Syntaxin 16 Monoclonal antibody

Catalog Number: 66775-1-Ig



## Basic Information

<b>Catalog Number:</b> 66775-1-Ig	<b>GenBank Accession Number:</b> BC019042	<b>Purification Method:</b> Protein G purification
<b>Size:</b> 150ul , Concentration: 1000 ug/ml by Bradford method using BSA as the standard;	<b>GeneID (NCBI):</b> 8675	<b>CloneNo.:</b> 4A9D8
<b>Source:</b> Mouse	<b>UNIPROT ID:</b> O14662	<b>Recommended Dilutions:</b> WB 1:2000-1:10000 IHC 1:250-1:1000 IF/ICC 1:100-1:800
<b>Isotype:</b> IgG1	<b>Full Name:</b> syntaxin 16	
<b>Immunogen Catalog Number:</b> AG27926	<b>Calculated MW:</b> 37 kDa	
	<b>Observed MW:</b> 37-40 kDa	

## Applications

**Tested Applications:**  
WB, IHC, IF/ICC, ELISA

**Species Specificity:**  
Human, Mouse, Rat

**Note-IHC:** suggested antigen retrieval with **TE buffer pH 9.0; (\*) Alternatively, antigen retrieval may be performed with citrate buffer pH 6.0**

**Positive Controls:**

**WB :** HeLa cells, rat brain tissue, mouse brain tissue, HEK-293 cells, HepG2 cells, Jurkat cells

**IHC :** human lung cancer tissue, human colon cancer tissue

**IF/ICC :** Neuro-2a cells,

## Background Information

Syntaxin 16 (STX16), also named as SYN16, belongs to the syntaxin family. Syntaxins are target membrane SNAREs (Soluble NSF attachment protein receptors) which are membrane components that determine the specificity of the docking and fusion of vesicles to target membranes. STX16 is localized to the Golgi apparatus.

## Storage

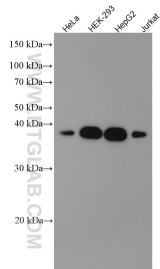
**Storage:**  
Store at -20°C. Stable for one year after shipment.  
**Storage Buffer:**  
PBS with 0.02% sodium azide and 50% glycerol pH 7.3.  
**Aliquoting is unnecessary for -20°C storage**

\*\*\* 20ul sizes contain 0.1% BSA

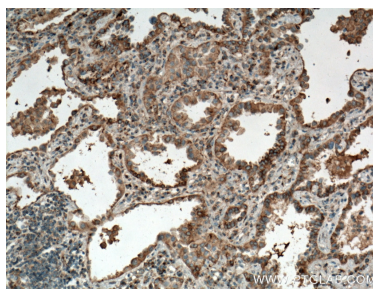
For technical support and original validation data for this product please contact:  
T: 1 (888) 4PTGLAB (1-888-478-4522) (toll free in USA), or 1(312) 455-8498 (outside USA)  
E: [proteintech@ptglab.com](mailto:proteintech@ptglab.com)  
W: [ptglab.com](http://ptglab.com)

This product is exclusively available under Proteintech Group brand and is not available to purchase from any other manufacturer.

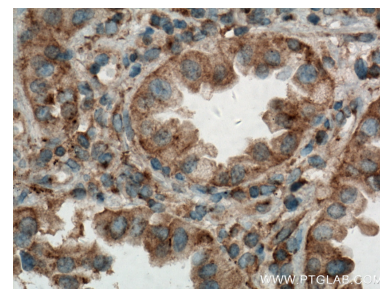
## Selected Validation Data



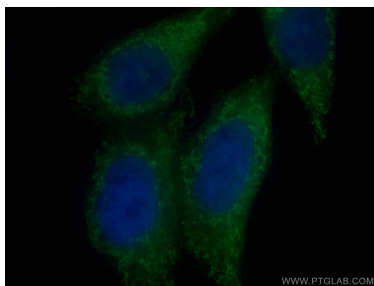
Various lysates were subjected to SDS PAGE followed by western blot with 66775-1-Ig (Syntaxin 16 antibody) at dilution of 1:5000 incubated at room temperature for 1.5 hours.



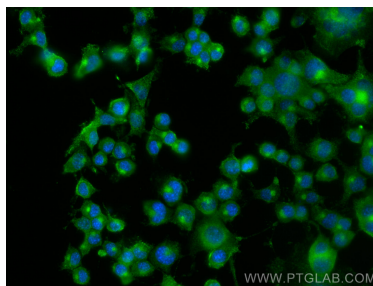
Immunohistochemical analysis of paraffin-embedded human lung cancer tissue slide using 66775-1-Ig (Syntaxin 16 antibody) at dilution of 1:500 (under 10x lens. Heat mediated antigen retrieval with Tris-EDTA buffer (pH 9.0).



Immunohistochemical analysis of paraffin-embedded human lung cancer tissue slide using 66775-1-Ig (Syntaxin 16 antibody) at dilution of 1:500 (under 40x lens. Heat mediated antigen retrieval with Tris-EDTA buffer (pH 9.0).



Immunofluorescent analysis of (4% PFA) fixed HepG2 cells using 66775-1-Ig (Syntaxin 16 antibody) at dilution of 1:100 and Alexa Fluor 488-Conjugated Goat Anti-Mouse IgG(H+L).



Immunofluorescent analysis of (4% PFA) fixed Neuro-2a cells using Syntaxin 16 antibody (66775-1-Ig, Clone: 4A9D8) at dilution of 1:800 and CoraLite® 488-Conjugated Goat Anti-Mouse IgG(H+L).