

For Research Use Only

TOM20 Monoclonal antibody

Catalog Number: 66777-1-Ig **55 Publications**



Basic Information

| | | |
|--|---|--|
| Catalog Number: 66777-1-Ig | GenBank Accession Number: BC000882 | Purification Method: Protein A purification |
| Size: 150ul , Concentration: 1000 ug/ml by Nanodrop; | GeneID (NCBI): 9804 | CloneNo.: 1D6F5 |
| Source: Mouse | UNIPROT ID: Q15388 | Recommended Dilutions: WB 1:1000-1:5000 IHC 1:500-1:2000 IF/ICC 1:400-1:1600 |
| Isotype: IgG2b | Full Name: translocase of outer mitochondrial membrane 20 homolog (yeast) | |
| Immunogen Catalog Number: AG2378 | Calculated MW: 145 aa, 16 kDa | |
| | Observed MW: 16 kDa | |

Applications

| | |
|--|---|
| Tested Applications: WB, IHC, IF/ICC, FC (Intra), ELISA | Positive Controls: WB : HeLa cells, HEK-293 cells, HepG2 cells, Jurkat cells, THP-1 cells, K-562 cells IHC : human liver cancer tissue, human breast cancer tissue IF/ICC : HepG2 cells, |
| Cited Applications: WB, IHC, IF | |
| Species Specificity: human | |
| Cited Species: human, monkey, chicken, bovine | |
| Note-IHC: suggested antigen retrieval with TE buffer pH 9.0; (*) Alternatively, antigen retrieval may be performed with citrate buffer pH 6.0 | |

Background Information

TOM20, also named as KIAA0016, belongs to the Tom20 family. It is a central component of the receptor complex responsible for the recognition and translocation of cytosolically synthesized mitochondrial preproteins. Together with TOM22, TOM20 functions as the transit peptide receptor at the surface of the mitochondrion outer membrane and facilitates the movement of preproteins into the TOM40 translocation pore. TOM20 is characterized as major docking receptors to mediate the recognition by different mechanisms.

Notable Publications

| Author | Pubmed ID | Journal | Application |
|---------------|-----------|---------------------------|-------------|
| Lu Lu | 36183875 | Environ Pollut | IF |
| Ye Young Shin | 34826168 | J Pineal Res | IF |
| Fangli Peng | 36374514 | Invest Ophthalmol Vis Sci | IF |

Storage

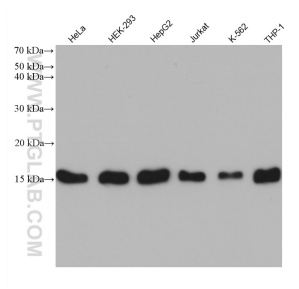
Storage:
Store at -20°C. Stable for one year after shipment.
Storage Buffer:
PBS with 0.02% sodium azide and 50% glycerol, pH7.3
Aliquoting is unnecessary for -20°C storage

*** 20ul sizes contain 0.1% BSA

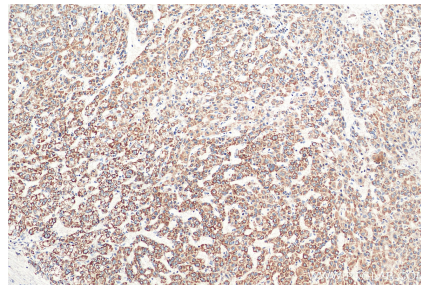
For technical support and original validation data for this product please contact:
T: 1 (888) 4PTGLAB (1-888-478-4522) (toll free in USA), or 1(312) 455-8498 (outside USA)
E: proteintech@ptglab.com
W: ptglab.com

This product is exclusively available under Proteintech Group brand and is not available to purchase from any other manufacturer.

Selected Validation Data



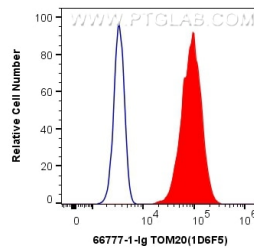
Various lysates were subjected to SDS PAGE followed by western blot with 66777-1-Ig (TOM20 antibody) at dilution of 1:5000 incubated at room temperature for 1.5 hours.



Immunohistochemical analysis of paraffin-embedded human liver cancer tissue slide using 66777-1-Ig (TOM20 antibody) at dilution of 1:1000 (under 10x lens). Heat mediated antigen retrieval with Tris-EDTA buffer (pH 9.0).



Immunofluorescent analysis of (4% PFA) fixed HepG2 cells using TOM20 antibody (66777-1-Ig, Clone: 1D6F5) at dilution of 1:800 and CoraLite®488-Conjugated Goat Anti-Mouse IgG(H+L), CL594-phalloidin (red).



1X10⁶ HeLa cells were intracellularly stained with 0.4 ug Anti-Human TOM20 (66777-1-Ig, Clone:1D6F5) and CoraLite®488-Conjugated Goat Anti-Mouse IgG(H+L) at dilution 1:1000 (red), or 0.4 ug Control Antibody. Cells were fixed with 4% PFA and permeabilized with Flow Cytometry Perm Buffer (PF00011-C).