

For Research Use Only

CD16 Monoclonal antibody, PBS Only (Capture)

Catalog Number: 66779-2-PBS



Basic Information

Catalog Number: 66779-2-PBS	GenBank Accession Number: BC017865	Purification Method: Protein G purification
Size: 100ug , Concentration: 1 mg/ml by Nanodrop;	GeneID (NCBI): 2214	CloneNo.: 2B6A3
Source: Mouse	ENSEMBL Gene ID: ENSG00000203747	
Isotype: IgG1	UNIPROT ID: P08637	
Immunogen Catalog Number: AG9787	Full Name: Fc fragment of IgG, low affinity IIIa, receptor (CD16a)	
	Calculated MW: 254 aa, 29 kDa	

Applications

Tested Applications:
Cytometric bead array, Indirect ELISA, Sample test

Species Specificity:
human

Product Information

66779-2-PBS targets CD16 as part of a matched antibody pair:

MP50298-1: 66779-2-PBS capture and 68897-1-PBS detection (validated in Cytometric bead array)

Unconjugated mouse monoclonal antibody pair in PBS only (BSA and azide free) storage buffer at a concentration of 1 mg/mL, ready for conjugation.

This conjugation ready format makes antibodies ideal for use in many applications including: ELISAs, multiplex assays requiring matched pairs, mass cytometry, and multiplex imaging applications. Antibody use should be optimized by the end user for each application and assay.

Storage

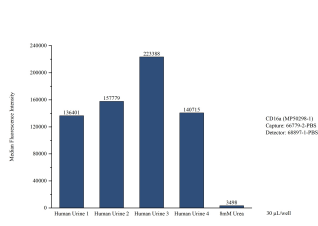
Storage:
Store at -80°C.

Storage Buffer:
PBS only, pH7.3

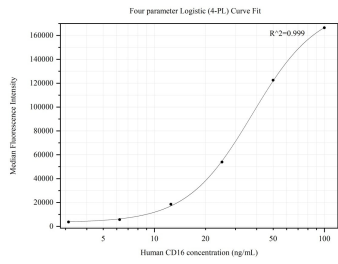
For technical support and original validation data for this product please contact:
T: 1 (888) 4PTGLAB (1-888-478-4522) (toll free in USA), or 1(312) 455-8498 (outside USA)
E: proteintech@ptglab.com
W: ptglab.com

This product is exclusively available under Proteintech Group brand and is not available to purchase from any other manufacturer.

Selected Validation Data



Cytometric bead array of Human urine using MP50298-1, CD16a Monoclonal Matched Antibody Pair, PBS Only. Capture antibody: 66779-2-PBS. Detection antibody: 68897-1-PBS. Urine of four individual healthy human donors was analyzed using MP50298-1.



Cytometric bead array standard curve of MP50298-1, CD16 Monoclonal Matched Antibody Pair, PBS Only. Capture antibody: 66779-2-PBS. Detection antibody: 68897-1-PBS. Standard:Eg31662. Range: 3.125-100 ng/mL