

For Research Use Only

LACTB Monoclonal antibody

Catalog Number: 66785-1-Ig

Featured Product

4 Publications



Basic Information

Catalog Number:

66785-1-Ig

GenBank Accession Number:

BC067288

Purification Method:

Protein G purification

Size:

150ul, Concentration: 1600 ug/ml by Nanodrop and 1000 ug/ml by Bradford method using BSA as the standard;

GeneID (NCBI):

114294

CloneNo.:

3C3C3

UNIPROT ID:

P83111

Recommended Dilutions:

WB 1:1000-1:6000

IHC 1:150-1:600

IF/ICC 1:800-1:3200

Source:

Mouse

Full Name:

lactamase, beta

Isotype:

IgG1

Calculated MW:

547 aa, 61 kDa

Immunogen Catalog Number:

AG12233

Observed MW:

50-60 kDa

Applications

Tested Applications:

WB, IHC, IF/ICC, ELISA

Positive Controls:

WB: HeLa cells, HEK-293 cells, HepG2 cells, Jurkat cells

Cited Applications:

WB, IHC, IF, IP

IHC: human liver cancer tissue,

Species Specificity:

human

IF/ICC: A549 cells,

Cited Species:

human, mouse

Note-IHC: suggested antigen retrieval with TE buffer pH 9.0; (*) Alternatively, antigen retrieval may be performed with citrate buffer pH 6.0

Background Information

LACTB is also named as MRPL56, which is a component of the large subunit of the mitochondrial ribosome that is encoded by the nuclear genome. LACTB is a mammalian active-site serine protein that has evolved from a bacterial penicillin-binding protein. It promotes intramitochondrial membrane organization and micro-compartmentalization through polymerization (PMID:19858488). Northern blot analysis of mouse tissues detected expression at high levels in liver, heart, and skeletal muscle, with lower levels in kidney, testis, brain, lung, and spleen (PMID:11707067). The full-length of LACTB is about 61kDa, and a 115aa transit peptide can be removed in the mature form.

Notable Publications

Author	Pubmed ID	Journal	Application
Chunxiao Wang	33273855	Cancer Manag Res	WB
Yawen Ma	33675985	Cancer Lett	WB, IHC, IF
Wenhao Ma	38787728	STAR Protoc	WB, IP

Storage

Storage:

Store at -20°C. Stable for one year after shipment.

Storage Buffer:

PBS with 0.02% sodium azide and 50% glycerol pH 7.3.

Aliquoting is unnecessary for -20°C storage

*** 20ul sizes contain 0.1% BSA

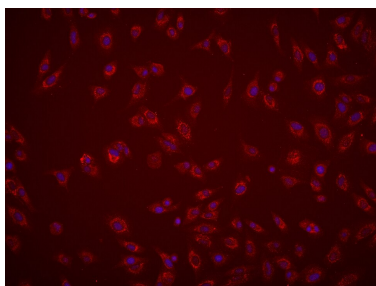
For technical support and original validation data for this product please contact:

T: 1 (888) 4PTGLAB (1-888-478-4522) (toll free in USA), or 1(312) 455-8498 (outside USA)

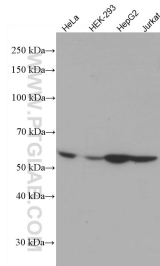
E: proteintech@ptglab.com
W: ptglab.com

This product is exclusively available under Proteintech Group brand and is not available to purchase from any other manufacturer.

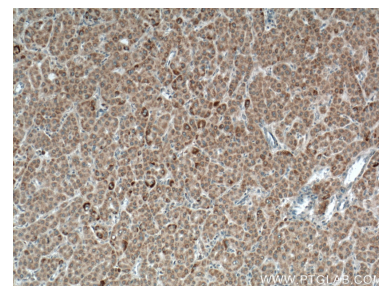
Selected Validation Data



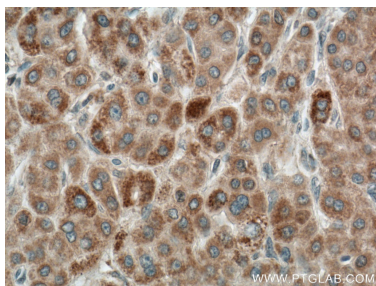
Immunofluorescent analysis of (4% PFA) fixed A549 cells using LACTB antibody (66785-1-Ig, Clone: 3C3C3) at dilution of 1:1600 and Multi-rAb CoraLite® Plus 594-Goat Anti-Mouse Recombinant Secondary Antibody (H+L) (Cat.NO. RGAM004).



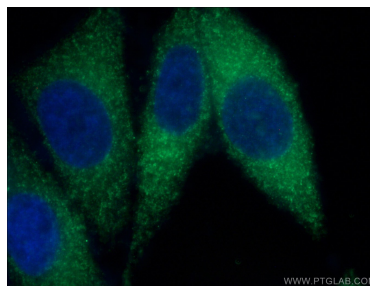
Various lysates were subjected to SDS PAGE followed by western blot with 66785-1-Ig (LACTB antibody) at dilution of 1:3000 incubated at room temperature for 1.5 hours.



Immunohistochemical analysis of paraffin-embedded human liver cancer tissue slide using 66785-1-Ig (LACTB antibody) at dilution of 1:300 (under 10x lens. Heat mediated antigen retrieval with Tris-EDTA buffer (pH 9.0).



Immunohistochemical analysis of paraffin-embedded human liver cancer tissue slide using 66785-1-Ig (LACTB antibody) at dilution of 1:300 (under 40x lens. Heat mediated antigen retrieval with Tris-EDTA buffer (pH 9.0).



Immunofluorescent analysis of (4% PFA) fixed HepG2 cells using 66785-1-Ig (LACTB antibody) at dilution of 1:100 and Alexa Fluor 488-Conjugated AffiniPure Goat Anti-Mouse IgG(H+L).