

For Research Use Only

CRACR2A Monoclonal antibody

Catalog Number: 66787-1-Ig

Featured Product



Basic Information

Catalog Number: 66787-1-Ig	GenBank Accession Number: BC004524	Purification Method: Protein G purification
Size: 150ul , Concentration: 1500 ug/ml by Nanodrop and 1000 ug/ml by Bradford method using BSA as the standard;	GeneID (NCBI): 84766	CloneNo.: 4C1F5
Source: Mouse	UNIPROT ID: Q9BSW2	Recommended Dilutions: WB 1:1000-1:6000 IHC 1:50-1:500 IF/ICC 1:50-1:500
Isotype: IgG1	Full Name: EF-hand calcium binding domain 4B	
Immunogen Catalog Number: AG7525	Calculated MW: 46 kDa	
	Observed MW: 80-90 kDa	

Applications

Tested Applications:
WB, IHC, IF/ICC, ELISA

Species Specificity:
human

Note-IHC: suggested antigen retrieval with **TE buffer pH 9.0; (*)** Alternatively, antigen retrieval may be performed with **citrate buffer pH 6.0**

Positive Controls:

WB : HEK-293 cells, Jurkat cells, Daudi cells, Ramos cells

IHC : human colon tissue,

IF/ICC : HEK-293 cells,

Background Information

CRACR2A (also called CRAC regulator 2A, EFCAB4B) is a cytoplasmic Ca²⁺ sensor predominantly expressed in lymphocytes. It has two isoforms: a long isoform of CRACR2A-a around 80-90 kDa and a short isoform of CRACR2A-c around 46 kDa. CRACR2A-c is involved in the regulation of Ca²⁺-NFAT signaling. CRACR2A-a exists in a GTP- and Golgi membrane-bound form in resting T cells, while it is present in subsynaptic vesicles that translocated from the Golgi region to the immunological synapse after ligation of TCRs. This antibody recognizes both of CRACR2A-c and CRACR2A-a.

Storage

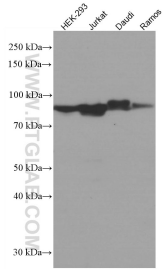
Storage:
Store at -20°C. Stable for one year after shipment.
Storage Buffer:
PBS with 0.02% sodium azide and 50% glycerol pH 7.3.
Aliquoting is unnecessary for -20°C storage

*** 20ul sizes contain 0.1% BSA

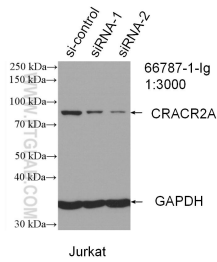
For technical support and original validation data for this product please contact:
T: 1 (888) 4PTGLAB (1-888-478-4522) (toll free in USA), or 1(312) 455-8498 (outside USA)
E: proteintech@ptglab.com
W: ptglab.com

This product is exclusively available under Proteintech Group brand and is not available to purchase from any other manufacturer.

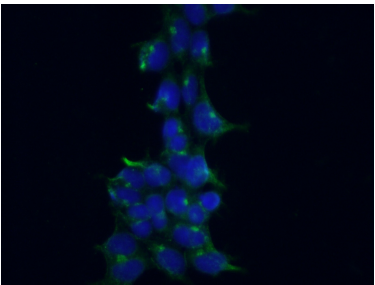
Selected Validation Data



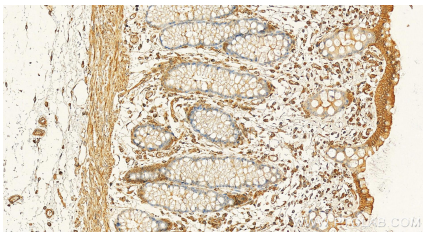
Various lysates were subjected to SDS PAGE followed by western blot with 66787-1-Ig (CRACR2A antibody) at dilution of 1:3000 incubated at room temperature for 1.5 hours.



WB result of CRACR2A antibody (66787-1-Ig; 1:3000; incubated at room temperature for 1.5 hours) with sh-Control and sh-CRACR2A transfected Jurkat cells.



Immunofluorescent analysis of (-20°C Ethanol) fixed HEK-293 cells using 66787-1-Ig (CRACR2A antibody) at dilution of 1:100 and Alexa Fluor 488-Conjugated AffiniPure Goat Anti-Mouse IgG(H+L).



Immunohistochemical analysis of paraffin-embedded human colon tissue slide using 66787-1-Ig (CRACR2A antibody) at dilution of 1:200 (under 20x lens). Heat mediated antigen retrieval with Tris-EDTA buffer (pH 9.0).