

For Research Use Only

CDR2L Monoclonal antibody

Catalog Number: 66791-1-Ig

Featured Product

1 Publications



Basic Information

Catalog Number:

66791-1-Ig

Size:

150ul, Concentration: 1400 ug/ml by Nanodrop and 1000 ug/ml by Bradford method using BSA as the standard;

Source:

Mouse

Isotype:

IgG1

Immunogen Catalog Number:

AG6139

GenBank Accession Number:

BC047534

GeneID (NCBI):

30850

UNIPROT ID:

Q86X02

Full Name:

cerebellar degeneration-related protein 2-like

Calculated MW:

53 kDa

Observed MW:

54 kDa

Purification Method:

Protein G purification

CloneNo.:

2E12D10

Recommended Dilutions:

WB 1:1000-1:6000

IHC 1:200-1:800

IF/ICC 1:400-1:1600

Applications

Tested Applications:

WB, IHC, IF/ICC, ELISA

Cited Applications:

IP

Species Specificity:

Human, Mouse, Rat

Cited Species:

human

Note-IHC: suggested antigen retrieval with TE buffer pH 9.0; (*) Alternatively, antigen retrieval may be performed with citrate buffer pH 6.0

Positive Controls:

WB : U-251 cells, HEK-293 cells, K-562 cells, human brain tissue, rat brain tissue, mouse brain tissue

IHC : human cerebellum tissue,

IF/ICC : HEK-293 cells,

Background Information

Cerebellar degeneration-related protein 2-like(CDR2L), also named as HUMPPA or Paraneoplastic 62 kDa antigen, is a 465 amino acid protein, which belongs to the CDR2 family. CDR2L contains three potential coiled-coil regions. The functions of protein is so far not known. CDR2L is expressed in the brain and localizes in the cytoplasm.

Notable Publications

Author	Pubmed ID	Journal	Application
Ida Herdlevaer	33009713	Ann Clin Transl Neurol	IP

Storage

Storage:

Store at -20°C. Stable for one year after shipment.

Storage Buffer:

PBS with 0.02% sodium azide and 50% glycerol pH 7.3.

Aliquoting is unnecessary for -20°C storage

*** 20ul sizes contain 0.1% BSA

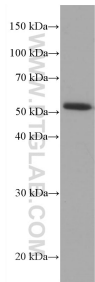
For technical support and original validation data for this product please contact:

T: 1 (888) 4PTGLAB (1-888-478-4522) (toll free in USA), or 1(312) 455-8498 (outside USA)

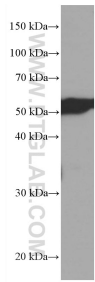
E: proteintech@ptglab.com
W: ptglab.com

This product is exclusively available under Proteintech Group brand and is not available to purchase from any other manufacturer.

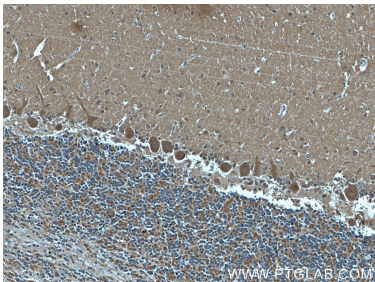
Selected Validation Data



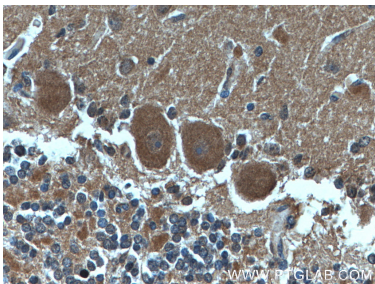
U-251 cells were subjected to SDS PAGE followed by western blot with 66791-1-Ig (CDR2L antibody) at dilution of 1:3000 incubated at room temperature for 1.5 hours.



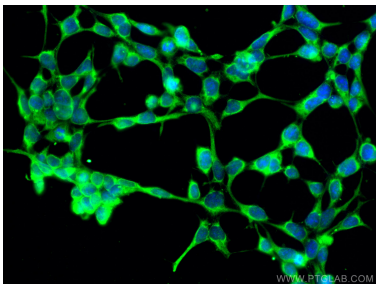
rat brain tissue were subjected to SDS PAGE followed by western blot with 66791-1-Ig (CDR2L antibody) at dilution of 1:3000 incubated at room temperature for 1.5 hours.



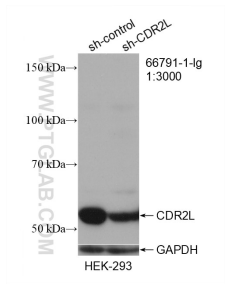
Immunohistochemical analysis of paraffin-embedded human cerebellum tissue slide using 66791-1-Ig (CDR2L antibody) at dilution of 1:400 (under 10x lens).



Immunohistochemical analysis of paraffin-embedded human cerebellum tissue slide using 66791-1-Ig (CDR2L antibody) at dilution of 1:400 (under 40x lens).



Immunofluorescent analysis of (-20°C Ethanol) fixed HEK-293 cells using CDR2L antibody (66791-1-Ig, Clone: 2E12D10) at dilution of 1:800 and Coralite®488-Conjugated AffiniPure Goat Anti-Mouse IgG(H+L).



WB result of CDR2L antibody (66791-1-Ig; 1:3000; incubated at room temperature for 1.5 hours) with sh-Control and sh-CDR2L transfected HEK-293 cells.