

For Research Use Only

CDR2L Monoclonal antibody, PBS Only



Catalog Number: 66791-1-PBS

Featured Product

Basic Information

Catalog Number:

66791-1-PBS

Size:

100ug , Concentration: 1 mg/ml by Nanodrop;

Source:

Mouse

Isotype:

IgG1

Immunogen Catalog Number:

AG6139

GenBank Accession Number:

BC047534

GeneID (NCBI):

30850

UNIPROT ID:

Q86X02

Full Name:

cerebellar degeneration-related protein 2-like

Calculated MW:

53 kDa

Observed MW:

54 kDa

Purification Method:

Protein G purification

CloneNo.:

2E12D10

Applications

Tested Applications:

WB, IF, IHC, Indirect ELISA

Species Specificity:

Human, Mouse, Rat

Background Information

Cerebellar degeneration-related protein 2-like(CDR2L), also named as HUMPPA or Paraneoplastic 62 kDa antigen, is a 465 amino acid protein, which belongs to the CDR2 family. CDR2L contains three potential coiled-coil regions. The functions of protein is so far not known. CDR2L is expressed in the brain and localizes in the cytoplasm.

Storage

Storage:

Store at -80°C.

Storage Buffer:

PBS Only

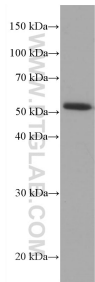
For technical support and original validation data for this product please contact:

T: 1 (888) 4PTGLAB (1-888-478-4522) (toll free in USA), or 1(312) 455-8498 (outside USA)

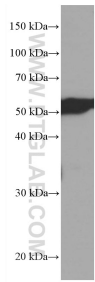
E: proteintech@ptglab.com
W: ptglab.com

This product is exclusively available under Proteintech Group brand and is not available to purchase from any other manufacturer.

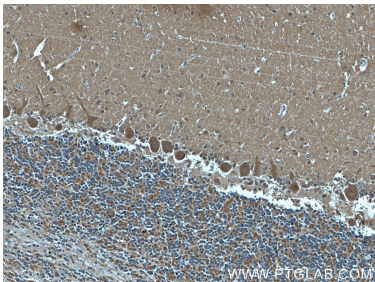
Selected Validation Data



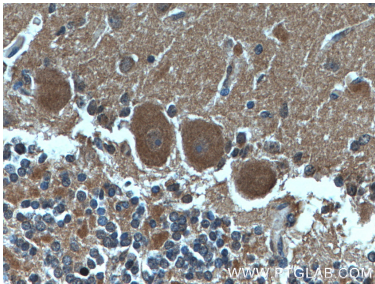
U-251 cells were subjected to SDS PAGE followed by western blot with 66791-1-Ig (CDR2L antibody) at dilution of 1:3000 incubated at room temperature for 1.5 hours. This data was developed using the same antibody clone with 66791-1-PBS in a different storage buffer formulation.



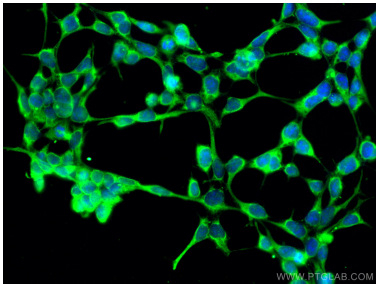
rat brain tissue were subjected to SDS PAGE followed by western blot with 66791-1-Ig (CDR2L antibody) at dilution of 1:3000 incubated at room temperature for 1.5 hours. This data was developed using the same antibody clone with 66791-1-PBS in a different storage buffer formulation.



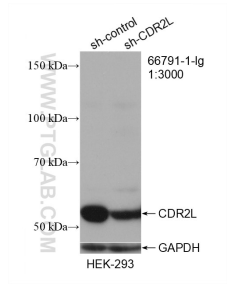
Immunohistochemical analysis of paraffin-embedded human cerebellum tissue slide using 66791-1-Ig (CDR2L antibody) at dilution of 1:400 (under 10x lens). This data was developed using the same antibody clone with 66791-1-PBS in a different storage buffer formulation.



Immunohistochemical analysis of paraffin-embedded human cerebellum tissue slide using 66791-1-Ig (CDR2L antibody) at dilution of 1:400 (under 40x lens). This data was developed using the same antibody clone with 66791-1-PBS in a different storage buffer formulation.



Immunofluorescent analysis of (-20°C Ethanol) fixed HEK-293 cells using CDR2L antibody (66791-1-Ig, Clone: 2E12D10) at dilution of 1:800 and Coralite®488-Conjugated AffiniPure Goat Anti-Mouse IgG(H+L). This data was developed using the same antibody clone with 66791-1-PBS in a different storage buffer formulation.



WB result of CDR2L antibody (66791-1-Ig; 1:3000; incubated at room temperature for 1.5 hours) with sh-Control and sh-CDR2L transfected HEK-293 cells. This data was developed using the same antibody clone with 66791-1-PBS in a different storage buffer formulation.