

For Research Use Only

# COMP Monoclonal antibody

Catalog Number: 66793-1-Ig



## Basic Information

<b>Catalog Number:</b> 66793-1-Ig	<b>GenBank Accession Number:</b> BC033676	<b>Purification Method:</b> Protein G purification
<b>Size:</b> 150ul, Concentration: 1500 ug/ml by Nanodrop and 1000 ug/ml by Bradford method using BSA as the standard;	<b>GeneID (NCBI):</b> 1311	<b>CloneNo.:</b> 1D7A6
<b>Source:</b> Mouse	<b>UNIPROT ID:</b> P49747	<b>Recommended Dilutions:</b> WB 1:500-1:2000 IF/ICC 1:200-1:800
<b>Isotype:</b> IgG1	<b>Full Name:</b> cartilage oligomeric matrix protein	
<b>Immunogen Catalog Number:</b> AG4575	<b>Calculated MW:</b> 757 aa, 83 kDa	
	<b>Observed MW:</b> 100-130 kDa	

## Applications

<b>Tested Applications:</b> WB, IF/ICC, ELISA	<b>Positive Controls:</b>
<b>Species Specificity:</b> human, pig	<b>WB :</b> pig cartilage tissue, <b>IF/ICC :</b> HepG2 cells, U2OS cells

## Background Information

COMP is a secreted pentameric glycoprotein built from modular units and belongs to the thrombospondin protein family. COMP is expressed by hypertrophic chondrocytes and osteoblasts during endochondral ossification, and its expression is increased during fracture healing. COMP is involved in the assembly of collagen fibrils and other structural matrix components. COMP interacts with a number of cartilage ECM proteins, including fibronectin, collagen I, II IX, XII, and XIV, matrilins, as well as proteoglycans such as aggrecan and others. This antibody got 100-130 kDa maybe due to glycosylation.

## Storage

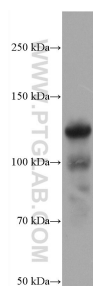
**Storage:**  
Store at -20°C. Stable for one year after shipment.  
**Storage Buffer:**  
PBS with 0.02% sodium azide and 50% glycerol, pH7.3  
**Aliquoting is unnecessary for -20°C storage**

\*\*\* 20ul sizes contain 0.1% BSA

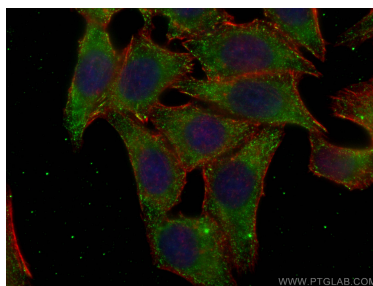
For technical support and original validation data for this product please contact:  
T: 1 (888) 4PTGLAB (1-888-478-4522) (toll free in USA), or 1(312) 455-8498 (outside USA)  
E: [proteintech@ptglab.com](mailto:proteintech@ptglab.com)  
W: [ptglab.com](http://ptglab.com)

This product is exclusively available under Proteintech Group brand and is not available to purchase from any other manufacturer.

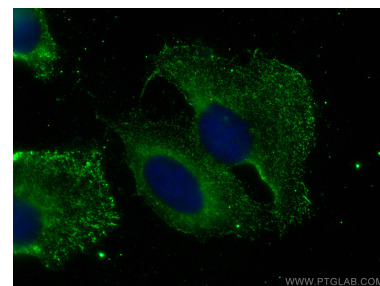
## Selected Validation Data



pig cartilage tissue were subjected to SDS PAGE followed by western blot with 66793-1-Ig (COMP antibody) at dilution of 1:1000 incubated at room temperature for 1.5 hours.



Immunofluorescent analysis of (-20°C Ethanol) fixed HepG2 cells using COMP antibody (66793-1-Ig, Clone: 1D7A6 ) at dilution of 1:400 and CoraLite®488-Conjugated AffiniPure Goat Anti-Mouse IgG(H+L), CL594-Phalloidin (red).



Immunofluorescent analysis of (-20°C Methanol) fixed U2OS cells using COMP antibody (66793-1-Ig, Clone: 1D7A6 ) at dilution of 1:400 and CoraLite®488-Conjugated AffiniPure Goat Anti-Mouse IgG(H+L).