

For Research Use Only

COMP Monoclonal antibody

Catalog Number: 66793-1-Ig



Basic Information

Catalog Number: 66793-1-Ig	GenBank Accession Number: BC033676	Purification Method: Protein G purification
Size: 150ul , Concentration: 1500 ug/ml by Nanodrop and 1000 ug/ml by Bradford method using BSA as the standard;	GeneID (NCBI): 1311	CloneNo.: 1D7A6
Source: Mouse	UNIPROT ID: P49747	Recommended Dilutions: WB 1:500-1:2000 IF/ICC 1:200-1:800
Isotype: IgG1	Full Name: cartilage oligomeric matrix protein	
Immunogen Catalog Number: AG4575	Calculated MW: 757 aa, 83 kDa	
	Observed MW: 100-130 kDa	

Applications

Tested Applications: WB, IF/ICC, ELISA	Positive Controls:
Species Specificity: Human, pig	WB : pig cartilage tissue, IF/ICC : HepG2 cells, U2OS cells

Background Information

COMP is a secreted pentameric glycoprotein built from modular units and belongs to the thrombospondin protein family. COMP is expressed by hypertrophic chondrocytes and osteoblasts during endochondral ossification, and its expression is increased during fracture healing. COMP is involved in the assembly of collagen fibrils and other structural matrix components. COMP interacts with a number of cartilage ECM proteins, including fibronectin, collagen I, II IX, XII, and XIV, matrilins, as well as proteoglycans such as aggrecan and others. This antibody got 100-130 kDa maybe due to glycosylation.

Storage

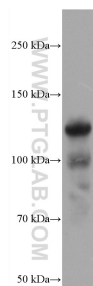
Storage:
Store at -20°C. Stable for one year after shipment.
Storage Buffer:
PBS with 0.02% sodium azide and 50% glycerol pH 7.3.
Aliquoting is unnecessary for -20°C storage

*** 20ul sizes contain 0.1% BSA

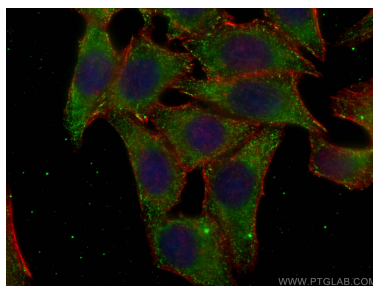
For technical support and original validation data for this product please contact:
T: 1 (888) 4PTGLAB (1-888-478-4522) (toll free in USA), or 1(312) 455-8498 (outside USA)
E: proteintech@ptglab.com
W: ptglab.com

This product is exclusively available under Proteintech Group brand and is not available to purchase from any other manufacturer.

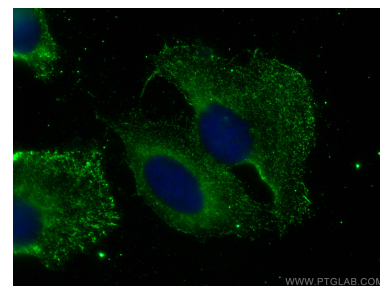
Selected Validation Data



pig cartilage tissue were subjected to SDS PAGE followed by western blot with 66793-1-Ig (COMP antibody) at dilution of 1:1000 incubated at room temperature for 1.5 hours.



Immunofluorescent analysis of (-20°C Ethanol) fixed HepG2 cells using COMP antibody (66793-1-Ig, Clone: 1D7A6) at dilution of 1:400 and CoraLite®488-Conjugated Goat Anti-Mouse IgG(H+L), CL594-Phalloidin (red).



Immunofluorescent analysis of (-20°C Methanol) fixed U2OS cells using COMP antibody (66793-1-Ig, Clone: 1D7A6) at dilution of 1:400 and CoraLite®488-Conjugated Goat Anti-Mouse IgG(H+L).