

CCR6 Monoclonal antibody

Catalog Number: 66801-1-Ig 1 Publications

Basic Information

Catalog Number: 66801-1-Ig	GenBank Accession Number: BC037960	Purification Method: Protein A purification
Size: 150ul , Concentration: 1600 µg/ml by Nanodrop and 1000 µg/ml by Bradford method using BSA as the standard;	GeneID (NCBI): 1235	CloneNo.: 1C11A9
Source: Mouse	Full Name: chemokine (C-C motif) receptor 6	Recommended Dilutions: IHC 1:250-1:1000 IF 1:400-1:1600
Isotype: IgG2a	Calculated MW: 42 kDa	
Immunogen Catalog Number: AG24195		

Applications

Tested Applications: FC, IF, IHC, ELISA	Positive Controls:
Cited Applications: IHC	IHC : human tonsillitis tissue,
Species Specificity: Human	IF : Jurkat cells, human tonsillitis tissue
Cited Species: human	
Note-IHC: suggested antigen retrieval with TE buffer pH 9.0; (*) Alternatively, antigen retrieval may be performed with citrate buffer pH 6.0	

Background Information

CCR6, also known as CD196, is a C-C chemokine receptor that belongs to family A of G protein-coupled receptor superfamily. It is expressed in most B cells, memory T cells, and some subsets of dendritic cells (PMID: 17057190). CCR6 is a receptor for the C-C type chemokine CCL20 (PMID: 9169459). The ligand-receptor pair CCL20-CCR6 is responsible for the chemoattraction of immature dendritic cells, effector/memory T-cells, and B-cells and plays a role in skin and mucosal surfaces under homeostatic and inflammatory conditions, as well as in pathology, including cancer and rheumatoid arthritis (PMID: 12948524). CCR6 polymorphism has been associated with rheumatoid arthritis susceptibility and CCR6 is involved in IL-17-driven autoimmunity in human diseases (PMID: 20453841).

Notable Publications

Author	Pubmed ID	Journal	Application
Yufei Liu	37579688	Neoplasia	IHC

Storage

Storage:
Store at -20°C. Stable for one year after shipment.

Storage Buffer:
PBS with 0.02% sodium azide and 50% glycerol pH 7.3.

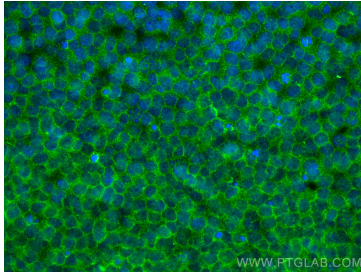
Aliquoting is unnecessary for -20°C storage

*** 20ul sizes contain 0.1% BSA

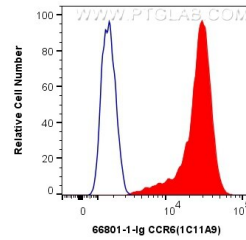
For technical support and original validation data for this product please contact:
 T: 1 (888) 4PTGLAB (1-888-478-4522) (toll free in USA), or 1(312) 455-8498 (outside USA)
 E: proteintech@ptglab.com
 W: ptglab.com

This product is exclusively available under Proteintech Group brand and is not available to purchase from any other manufacturer.

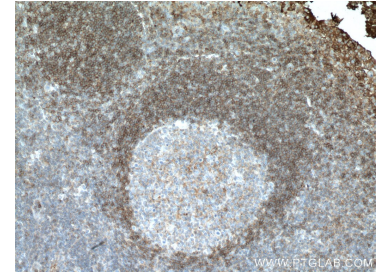
Selected Validation Data



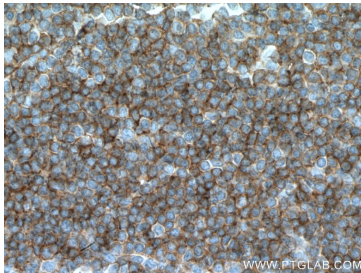
Immunofluorescent analysis of (4% PFA) fixed Jurkat cells using CCR6 antibody (66801-1-Ig, Clone: 1C11A9) at dilution of 1:800 and CoraLite®488-Conjugated AffiniPure Goat Anti-Mouse IgG(H+L).



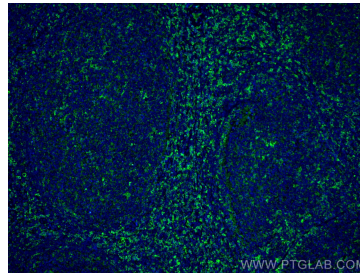
1X10⁶ Jurkat cells were intracellularly stained with 0.4 ug Anti-Human CCR6 (66801-1-Ig, Clone:1C11A9) and CoraLite®488-Conjugated AffiniPure Goat Anti-Mouse IgG(H+L) at dilution 1:1000 (red), or 0.4 ug Mouse IgG2a Isotype Control (66360-2-Ig, Clone: K11A1B2A2) (blue). Cells were fixed with 4% PFA and permeabilized with Flow Cytometry Perm Buffer (PF00011-C).



Immunohistochemical analysis of paraffin-embedded human tonsillitis tissue slide using 66801-1-Ig (CCR6 antibody) at dilution of 1:500 (under 10x lens. Heat mediated antigen retrieval with Tris-EDTA buffer (pH 9.0).



Immunohistochemical analysis of paraffin-embedded human tonsillitis tissue slide using 66801-1-Ig (CCR6 antibody) at dilution of 1:500 (under 40x lens. Heat mediated antigen retrieval with Tris-EDTA buffer (pH 9.0).



Immunofluorescent analysis of (4% PFA) fixed human tonsillitis tissue using CCR6 antibody (66801-1-Ig, Clone: 1C11A9) at dilution of 1:800 and CoraLite®488-Conjugated AffiniPure Goat Anti-Mouse IgG(H+L).