

For Research Use Only

CCR6 Monoclonal antibody, PBS Only



Catalog Number: 66801-1-PBS

Basic Information

Catalog Number: 66801-1-PBS	GenBank Accession Number: BC037960	Purification Method: Protein A purification
Size: 100ug , Concentration: 1 mg/ml by Nanodrop;	GeneID (NCBI): 1235	CloneNo.: 1C11A9
Source: Mouse	UNIPROT ID: P51684	
Isotype: IgG2a	Full Name: chemokine (C-C motif) receptor 6	
Immunogen Catalog Number: AG24195	Calculated MW: 42 kDa	

Applications

Tested Applications:
IF, FC, IHC, ELISA

Species Specificity:
Human

Background Information

CCR6, also known CD196, is a C-C chemokine receptor that belongs to family A of G protein-coupled receptor superfamily. It is expressed on most B cells, memory T cells, and some subsets of dendritic cells (PMID: 17057190). CCR6 is a receptor for the C-C type chemokine CCL20 (PMID: 9169459). The ligand-receptor pair CCL20-CCR6 is responsible for the chemoattraction of immature dendritic cells, effector/memory T-cells and B-cells and plays a role at skin and mucosal surfaces under homeostatic and inflammatory conditions, as well as in pathology, including cancer and rheumatoid arthritis (PMID: 12948524). CCR6 polymorphism has been associated with rheumatoid arthritis susceptibility and CCR6 is involved in IL-17-driven autoimmunity in human diseases (PMID: 20453841).

Storage

Storage:
Store at -20°C. Stable for one year after shipment.

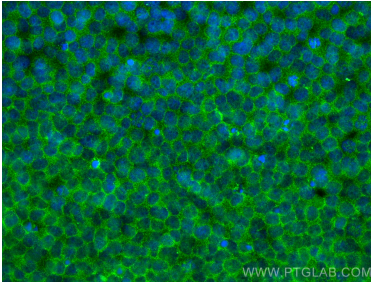
Storage Buffer:
PBS only

Aliquoting is unnecessary for -20°C storage

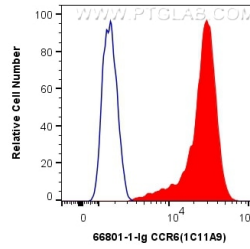
For technical support and original validation data for this product please contact:
T: 1 (888) 4PTGLAB (1-888-478-4522) (toll free in USA), or 1(312) 455-8498 (outside USA) E: proteintech@ptglab.com W: ptglab.com

This product is exclusively available under Proteintech Group brand and is not available to purchase from any other manufacturer.

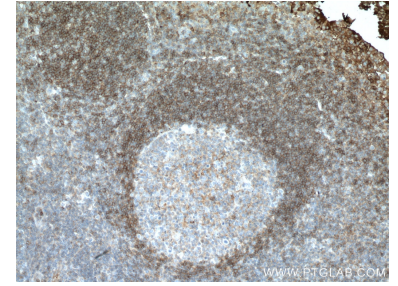
Selected Validation Data



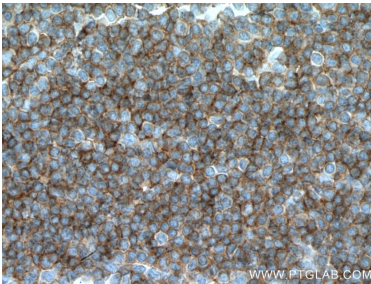
Immunofluorescent analysis of (4% PFA) fixed Jurkat cells using CCR6 antibody (66801-1-Ig, Clone: 1C11A9) at dilution of 1:800 and CoraLite®488-Conjugated AffiniPure Goat Anti-Mouse IgG(H+L). This data was developed using the same antibody clone with 66801-1-PBS in a different storage buffer formulation.



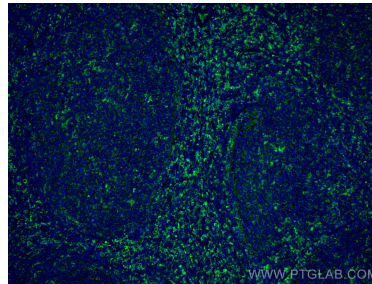
1X10⁶ Jurkat cells were intracellularly stained with 0.4 ug Anti-Human CCR6 (66801-1-Ig, Clone:1C11A9) and CoraLite®488-Conjugated AffiniPure Goat Anti-Mouse IgG(H+L) at dilution 1:1000 (red), or 0.4 ug Mouse IgG2a Isotype Control (66360-2-Ig, Clone: K11A1B2A2) (blue). Cells were fixed with 4% PFA and permeabilized with Flow Cytometry Perm Buffer (PF00011-C). This data was developed using the same antibody clone with 66801-1-PBS in a different storage buffer



Immunohistochemical analysis of paraffin-embedded human tonsillitis tissue slide using 66801-1-Ig (CCR6 antibody) at dilution of 1:500 (under 10x lens. Heat mediated antigen retrieval with Tris-EDTA buffer (pH 9.0). This data was developed using the same antibody clone with 66801-1-PBS in a different storage buffer formulation.



Immunohistochemical analysis of paraffin-embedded human tonsillitis tissue slide using 66801-1-Ig (CCR6 antibody) at dilution of 1:500 (under 40x lens. Heat mediated antigen retrieval with Tris-EDTA buffer (pH 9.0). This data was developed using the same antibody clone with 66801-1-PBS in a different storage buffer formulation.



Immunofluorescent analysis of (4% PFA) fixed human tonsillitis tissue using CCR6 antibody (66801-1-Ig, Clone: 1C11A9) at dilution of 1:800 and CoraLite®488-Conjugated AffiniPure Goat Anti-Mouse IgG(H+L). This data was developed using the same antibody clone with 66801-1-PBS in a different storage buffer formulation.