

For Research Use Only

# Cytokeratin 16 Monoclonal antibody, PBS Only

Catalog Number: 66802-1-PBS

Featured Product



## Basic Information

Catalog Number:

66802-1-PBS

Size:

100ug, Concentration: 1mg/ml by  
Nanodrop;

Source:

Mouse

Isotype:

IgG1

Immunogen Catalog Number:

AG11240

GenBank Accession Number:

BC039169

GeneID (NCBI):

3868

UNIPROT ID:

P08779

Full Name:

keratin 16

Calculated MW:

473 aa, 51 kDa

Observed MW:

51 kDa

Purification Method:

Protein A purification

CloneNo.:

2H4D8

## Applications

Tested Applications:

WB, IHC, IF/ICC, ELISA

Species Specificity:

human

## Background Information

Keratins are a large family of proteins that form the intermediate filament cytoskeleton of epithelial cells, which are classified into two major sequence types. Type I keratins are a group of acidic intermediate filament proteins, including K9-K23, and the hair keratins Ha1-Ha8. Type II keratins are the basic or neutral counterparts to the acidic type I keratins, including K1-K8, and the hair keratins, Hb1-Hb6. Keratin 16 is a type I cytokeratin. It is paired with keratin 6 in a number of epithelial tissues, including nail bed, esophagus, tongue, and hair follicles.

## Storage

Storage:

Store at -80°C.

Storage Buffer:

PBS Only

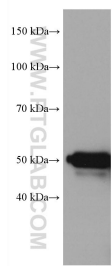
For technical support and original validation data for this product please contact:

T: 1 (888) 4PTGLAB (1-888-478-4522) (toll free  
in USA), or 1(312) 455-8498 (outside USA)

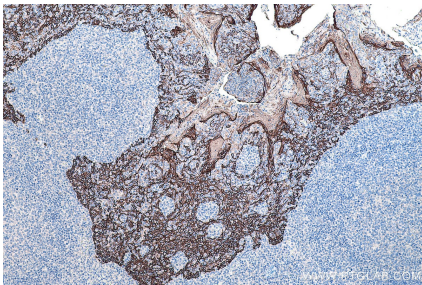
E: [proteintech@ptglab.com](mailto:proteintech@ptglab.com)  
W: [ptglab.com](http://ptglab.com)

This product is exclusively available under Proteintech Group brand and is not available to purchase from any other manufacturer.

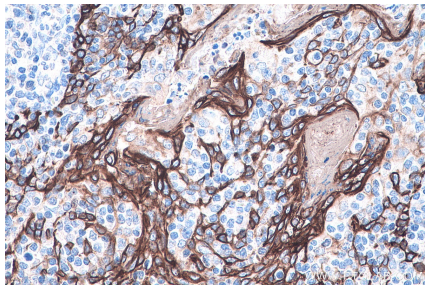
Selected Validation Data



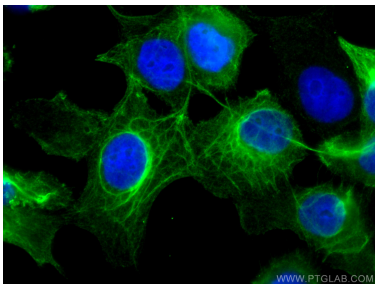
A431 cells were subjected to SDS PAGE followed by western blot with 66802-1-Ig (Cytokeratin 16 antibody) at dilution of 1:10000 incubated at room temperature for 1.5 hours. This data was developed using the same antibody clone with 66802-1-PBS in a different storage buffer formulation.



Immunohistochemical analysis of paraffin-embedded human tonsillitis tissue slide using 66802-1-Ig (Cytokeratin 16 antibody) at dilution of 1:4000 (under 10x lens). Heat mediated antigen retrieval with Tris-EDTA buffer (pH 9.0). This data was developed using the same antibody clone with 66802-1-PBS in a different storage buffer formulation.



Immunohistochemical analysis of paraffin-embedded human tonsillitis tissue slide using 66802-1-Ig (Cytokeratin 16 antibody) at dilution of 1:4000 (under 40x lens). Heat mediated antigen retrieval with Tris-EDTA buffer (pH 9.0). This data was developed using the same antibody clone with 66802-1-PBS in a different storage buffer formulation.



Immunofluorescent analysis of (-20°C Ethanol) fixed A431 cells using Cytokeratin 16 antibody (66802-1-Ig, Clone: 2H4D8) at dilution of 1:400 and CoraLite®488-Conjugated AffiniPure Goat Anti-Mouse IgG(H+L). This data was developed using the same antibody clone with 66802-1-PBS in a different storage buffer formulation.



Immunohistochemical analysis of paraffin-embedded human tonsillitis tissue slide using 66802-1-Ig (Cytokeratin 16 antibody) at dilution of 1:8000 (under 10x lens). Heat mediated antigen retrieval with Tris-EDTA buffer (pH 9.0). This data was developed using the same antibody clone with 66802-1-PBS in a different storage buffer formulation.