

For Research Use Only

# EEF1A2 Monoclonal antibody, PBS Only

Catalog Number: 66806-1-PBS



## Basic Information

<b>Catalog Number:</b> 66806-1-PBS	<b>GenBank Accession Number:</b> BC000432	<b>Purification Method:</b> Protein G purification
<b>Size:</b> 100ug , Concentration: 1mg/ml by Nanodrop;	<b>GeneID (NCBI):</b> 1917	<b>CloneNo.:</b> 4F3F4
<b>Source:</b> Mouse	<b>UNIPROT ID:</b> Q05639	
<b>Isotype:</b> IgG1	<b>Full Name:</b> eukaryotic translation elongation factor 1 alpha 2	
<b>Immunogen Catalog Number:</b> AG6875	<b>Calculated MW:</b> 50 kDa	
	<b>Observed MW:</b> 48-50 kDa	

## Applications

**Tested Applications:**  
WB, IHC, Indirect ELISA

**Species Specificity:**  
human, mouse, rat, pig

## Background Information

eEF1A2 is one of two isoforms (eEF1A1 and eEF1A2) of eukaryotic elongation factor 1 alpha (eEF1A or eEF1α). The two isoforms share more than 90% sequence identity and have the similar function that being a protein translation factor involved in protein synthesis. Addition, eEF1A2 plays an important role in cell cycle regulation, heat-shock response, aging, posttranslational modifications, and signal transduction (PMID: 25905039). eEF1A2 is expressed in heart, brain tissue, diaphragm and skeletal muscle while eEF1A1 is expressed ubiquitously (PMID:14588074). And the eEF1A2 protein stimulates the phospholipid signaling and activates the Akt-dependent cell migration and actin remodeling that ultimately favors tumorigenesis. It is reported that eEF1A2 was related with kinds of cancers such as ovarian cancer, prostate cancer, pancreatic cancer, breast cancer and lung cancer (PMID:14588074; 24853801; 25744894; 25905039). An 48 kDa band has also been reported(PMID: 24285179).

## Storage

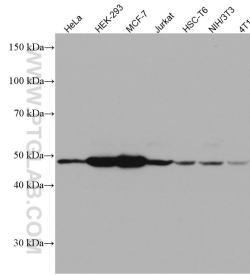
**Storage:**  
Store at -80°C.

**Storage Buffer:**  
PBS Only

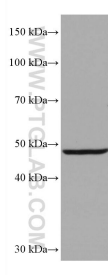
For technical support and original validation data for this product please contact:  
T: 1 (888) 4PTGLAB (1-888-478-4522) (toll free in USA), or 1(312) 455-8498 (outside USA)  
E: [proteintech@ptglab.com](mailto:proteintech@ptglab.com)  
W: [ptglab.com](http://ptglab.com)

This product is exclusively available under Proteintech Group brand and is not available to purchase from any other manufacturer.

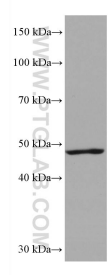
## Selected Validation Data



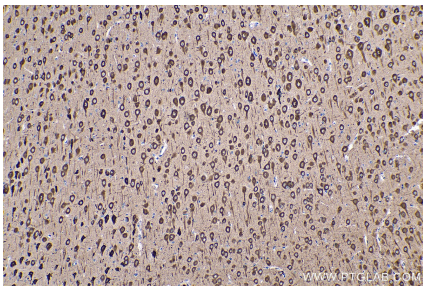
Various lysates were subjected to SDS PAGE followed by western blot with 66806-1-Ig (EEF1A2 antibody) at dilution of 1:3000 incubated at room temperature for 1.5 hours. This data was developed using the same antibody clone with 66806-1-PBS in a different storage buffer formulation.



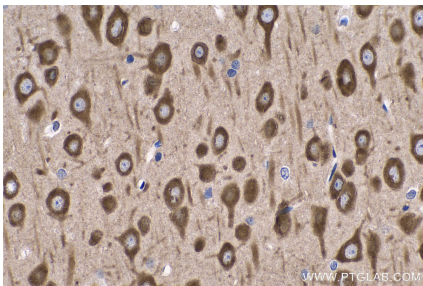
mouse brain tissue were subjected to SDS PAGE followed by western blot with 66806-1-Ig (EEF1A2 antibody) at dilution of 1:20000 incubated at room temperature for 1.5 hours. This data was developed using the same antibody clone with 66806-1-PBS in a different storage buffer formulation.



rat brain tissue were subjected to SDS PAGE followed by western blot with 66806-1-Ig (EEF1A2 antibody) at dilution of 1:20000 incubated at room temperature for 1.5 hours. This data was developed using the same antibody clone with 66806-1-PBS in a different storage buffer formulation.



Immunohistochemical analysis of paraffin-embedded rat brain tissue slide using 66806-1-Ig (EEF1A2 antibody) at dilution of 1:1000 (under 10x lens). Heat mediated antigen retrieval with Tris-EDTA buffer (pH 9.0). This data was developed using the same antibody clone with 66806-1-PBS in a different storage buffer formulation.



Immunohistochemical analysis of paraffin-embedded rat brain tissue slide using 66806-1-Ig (EEF1A2 antibody) at dilution of 1:1000 (under 40x lens). Heat mediated antigen retrieval with Tris-EDTA buffer (pH 9.0). This data was developed using the same antibody clone with 66806-1-PBS in a different storage buffer formulation.