

For Research Use Only

GCLM Monoclonal antibody

Catalog Number: 66808-1-Ig

Featured Product

4 Publications



Basic Information

Catalog Number:

66808-1-Ig

Size:

150ul, Concentration: 2500 ug/ml by 2730
Nanodrop and 1000 ug/ml by Bradford
method using BSA as the standard;

Source:

Mouse

Isotype:

IgG2b

Immunogen Catalog Number:

AG5497

GenBank Accession Number:

BC041809

GeneID (NCBI):

2730

UNIPROT ID:

P48507

Full Name:

glutamate-cysteine ligase, modifier
subunit

Calculated MW:

31 kDa

Observed MW:

31 kDa

Purification Method:

Protein A purification

CloneNo.:

1A5A4

Recommended Dilutions:

WB 1:2000-1:10000

IHC 1:50-1:500

Applications

Tested Applications:

WB, IHC, ELISA

Cited Applications:

WB

Species Specificity:

human, mouse, rat

Cited Species:

human, rat

**Note-IHC: suggested antigen retrieval with
TE buffer pH 9.0; (*) Alternatively, antigen
retrieval may be performed with citrate
buffer pH 6.0**

Positive Controls:

WB : HeLa cells, HEK-293 cells, MCF-7 cells, Jurkat
cells, HSC-T6 cells, NIH/3T3 cells, RAW 264.7 cells

IHC : human liver cancer tissue, human lung cancer
tissue

Notable Publications

Author	Pubmed ID	Journal	Application
Yuanyuan Wang	36223681	Eur J Med Chem	WB
Ning Ma	33763175	Oxid Med Cell Longev	WB
Feng Cao	37745297	Front Cell Dev Biol	WB

Storage

Storage:

Store at -20°C. Stable for one year after shipment.

Storage Buffer:

PBS with 0.02% sodium azide and 50% glycerol pH 7.3.

Aliquoting is unnecessary for -20°C storage

*** 20ul sizes contain 0.1% BSA

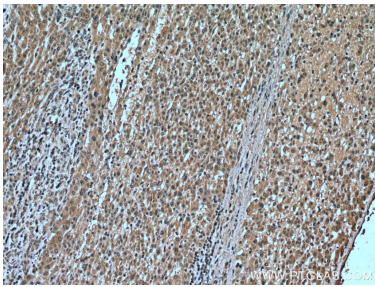
For technical support and original validation data for this product please contact:

T: 1 (888) 4PTGLAB (1-888-478-4522) (toll free
in USA), or 1(312) 455-8498 (outside USA)

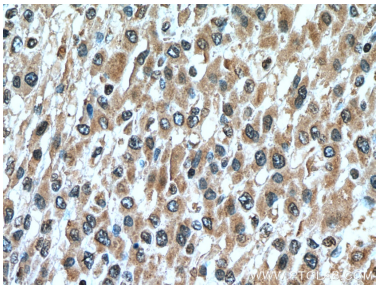
E: proteintech@ptglab.com
W: ptglab.com

This product is exclusively available under Proteintech
Group brand and is not available to purchase from any
other manufacturer.

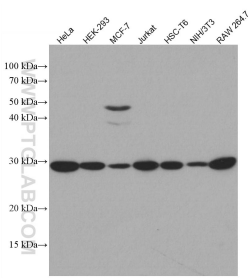
Selected Validation Data



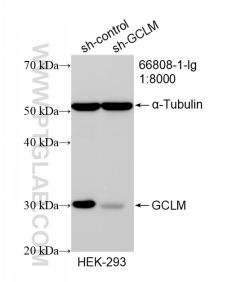
Immunohistochemical analysis of paraffin-embedded human liver cancer tissue slide using 66808-1-Ig (GCLM antibody) at dilution of 1:200 (under 10x lens). Heat mediated antigen retrieval with Tris-EDTA buffer (pH 9.0).



Immunohistochemical analysis of paraffin-embedded human liver cancer tissue slide using 66808-1-Ig (GCLM antibody) at dilution of 1:200 (under 40x lens). Heat mediated antigen retrieval with Tris-EDTA buffer (pH 9.0).



Various lysates were subjected to SDS PAGE followed by western blot with 66808-1-Ig (GCLM antibody) at dilution of 1:5000 incubated at room temperature for 1.5 hours.



WB result of GCLM antibody (66808-1-Ig; 1:8000; incubated at room temperature for 1.5 hours) with sh-Control and sh-GCLM transfected HEK-293 cells.