

For Research Use Only

PABPC1,PABP Monoclonal antibody

Catalog Number: 66809-1-Ig

Featured Product

4 Publications



Basic Information

Catalog Number: 66809-1-Ig	GenBank Accession Number: BC015958	Purification Method: Protein A purification
Size: 150ul , Concentration: 1000 ug/ml by Nanodrop;	GeneID (NCBI): 26986	CloneNo.: 3D8B5
Source: Mouse	UNIPROT ID: P11940	Recommended Dilutions: WB 1:2000-1:10000 IHC 1:50-1:500 IF/ICC 1:50-1:500
Isotype: IgG1	Full Name: poly(A) binding protein, cytoplasmic 1	
Immunogen Catalog Number: AG27860	Calculated MW: 71 kDa	
	Observed MW: 71 kDa	

Applications

Tested Applications: WB, IHC, IF/ICC, ELISA	Positive Controls:
Cited Applications: WB, IHC, IF, IP	WB : HeLa cells, LNCaP cells, MCF-7 cells, T-47D cells, NCCIT cells
Species Specificity: Human, rat, mouse	IHC : mouse testis tissue, mouse cerebellum tissue
Cited Species: human	IF/ICC : HEK-293 cells,
Note-IHC: suggested antigen retrieval with TE buffer pH 9.0; (*) Alternatively, antigen retrieval may be performed with citrate buffer pH 6.0	

Background Information

The poly(A)-binding protein (PABP), which is found complexed to the 3-prime poly(A) tail of eukaryotic mRNA, is required for poly(A) shortening and translation initiation [PMID: 21989405]. Polyadenylate-binding protein 1 (PABPC1) is a cytoplasmic-nuclear shuttling protein important for protein translation initiation, and both RNA processing and stability. In the cytoplasm, PABPC1 binds to the 3' poly(A) tail of eukaryotic mRNAs through its RNA-recognition motifs (RRM) and interacts with the N-terminus of eIF4G, part of the eIF4F complex associated with the 5' cap structure [PMID:20009508, 17381337].

Notable Publications

Author	Pubmed ID	Journal	Application
Abdoulaye Issotina Zibrila	34232157	J Hypertens	IHC
Tailai An	34420428	Future Oncol	IHC
Yi Yu	38887155	Adv Sci (Weinh)	WB,IF

Storage

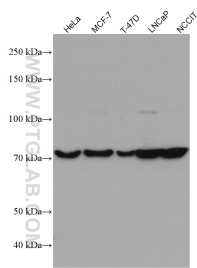
Storage:
Store at -20°C. Stable for one year after shipment.
Storage Buffer:
PBS with 0.02% sodium azide and 50% glycerol pH 7.3.
Aliquoting is unnecessary for -20°C storage

*** 20ul sizes contain 0.1% BSA

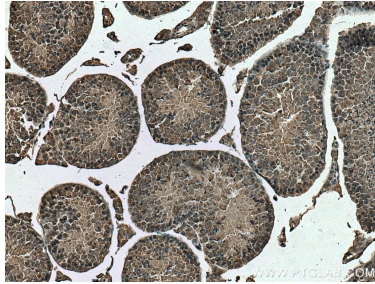
For technical support and original validation data for this product please contact:
T: 1 (888) 4PTGLAB (1-888-478-4522) (toll free in USA), or 1(312) 455-8498 (outside USA)
E: proteintech@ptglab.com
W: ptglab.com

This product is exclusively available under Proteintech Group brand and is not available to purchase from any other manufacturer.

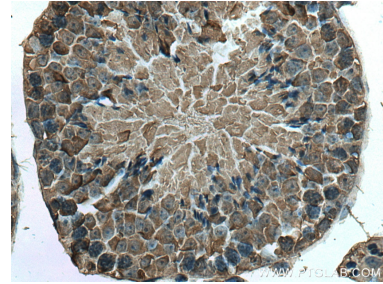
Selected Validation Data



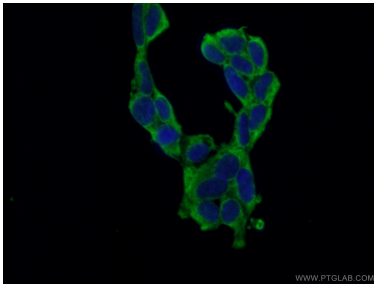
Various lysates were subjected to SDS PAGE followed by western blot with 66809-1-Ig (PABPC1,PABP antibody) at dilution of 1:5000 incubated at room temperature for 1.5 hours.



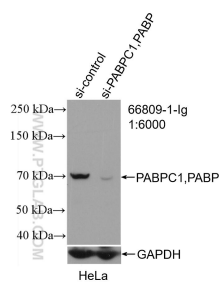
Immunohistochemical analysis of paraffin-embedded mouse testis tissue slide using 66809-1-Ig (PABPC1,PABP antibody) at dilution of 1:200 (under 10x lens). Heat mediated antigen retrieval with Tris-EDTA buffer (pH 9.0).



Immunohistochemical analysis of paraffin-embedded mouse testis tissue slide using 66809-1-Ig (PABPC1,PABP antibody) at dilution of 1:200 (under 40x lens). Heat mediated antigen retrieval with Tris-EDTA buffer (pH 9.0).



Immunofluorescent analysis of (-20°C Ethanol) fixed HEK-293 cells using 66809-1-Ig (PABPC1,PABP antibody) at dilution of 1:100 and Alexa Fluor 488-Conjugated Goat Anti-Mouse IgG(H+L).



WB result of PABPC1,PABP antibody (66809-1-Ig; 1:6000; incubated at room temperature for 1.5 hours) with sh-Control and sh-PABPC1,PABP transfected HeLa cells.