

For Research Use Only

CEP250,C-NAP1 Monoclonal antibody

Catalog Number: 66814-1-Ig **2 Publications**



Basic Information

Catalog Number: 66814-1-Ig	GenBank Accession Number: BC001433	Purification Method: Protein A purification
Size: 150ul , Concentration: 1600 ug/ml by Nanodrop and 1000 ug/ml by Bradford method using BSA as the standard;	GeneID (NCBI): 11190	CloneNo.: 2G12D12
Source: Mouse	UNIPROT ID: Q9BV73	Recommended Dilutions: WB 1:1000-1:8000 IF/ICC 1:400-1:1500
Isotype: IgG1	Full Name: centrosomal protein 250kDa	
Immunogen Catalog Number: AG5925	Calculated MW: 281 kDa	
	Observed MW: 280 kDa	

Applications

Tested Applications: WB, IF/ICC, ELISA	Positive Controls:
Cited Applications: IHC, IF	WB : HeLa cells, HEK-293 cells, HepG2 cells, Jurkat cells, K-562 cells, HL-60 cells
Species Specificity: Human	IF/ICC : HepG2 cells,
Cited Species: human, mouse	

Background Information

CEP250, also known as C-Nap1, is a coiled-coil protein that localizes to the proximal ends of mother and daughter centrioles. It is required for centriole-centriole cohesion during interphase of the cell cycle. It dissociates from the centrosomes when parental centrioles separate at the beginning of mitosis. The protein associates with and is phosphorylated by NIMA-related kinase 2, which is also associated with the centrosome.

Notable Publications

Author	Pubmed ID	Journal	Application
Guido Giordano	38942662	Pancreatology	IHC,IF
Luigi Cerulo	37250316	iScience	IHC,IF

Storage

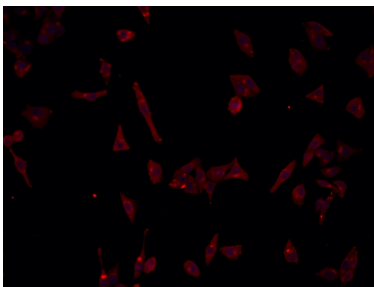
Storage:
Store at -20°C. Stable for one year after shipment.
Storage Buffer:
PBS with 0.02% sodium azide and 50% glycerol pH 7.3.
Aliquoting is unnecessary for -20°C storage

*** 20ul sizes contain 0.1% BSA

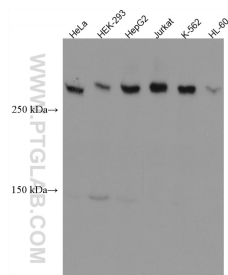
For technical support and original validation data for this product please contact:
T: 1 (888) 4PTGLAB (1-888-478-4522) (toll free in USA), or 1(312) 455-8498 (outside USA)
E: proteintech@ptglab.com
W: ptglab.com

This product is exclusively available under Proteintech Group brand and is not available to purchase from any other manufacturer.

Selected Validation Data



Immunofluorescent analysis of (4% PFA) fixed HepG2 cells using CEP250,C-NAP1 antibody (66814-1-Ig, Clone: 2G12D12) at dilution of 1:773 and Multi-rAb CoraLite® Plus 594-Goat Anti-Mouse Recombinant Secondary Antibody (H+L) (Cat.NO. RGAM004).



Various lysates were subjected to SDS PAGE followed by western blot with 66814-1-Ig (CEP250,C-NAP1 antibody) at dilution of 1:4000 incubated at room temperature for 1.5 hours.