

For Research Use Only

ESRRB Monoclonal antibody

Catalog Number: 66818-1-Ig **1 Publications**



Basic Information

Catalog Number: 66818-1-Ig	GenBank Accession Number: BC131517	Purification Method: Protein A purification
Size: 150ul , Concentration: 1300 ug/ml by Nanodrop and 1000 ug/ml by Bradford method using BSA as the standard;	GeneID (NCBI): 2103	CloneNo.: 3E10C1
Source: Mouse	UNIPROT ID: O95718	Recommended Dilutions: WB 1:1000-1:4000 IHC 1:1000-1:4000 IF/ICC 1:400-1:1600
Isotype: IgG1	Full Name: estrogen-related receptor beta	
Immunogen Catalog Number: AG18626	Calculated MW: 508 aa, 56 kDa	
	Observed MW: 47 kDa	

Applications

Tested Applications: WB, IHC, IF/ICC, ELISA	Positive Controls:
Cited Applications: IF	WB : HEK-293 cells, HeLa cells, NCCIT cells, JAR cells, A549 cells, Caco-2 cells, LNCaP cells, HT-29 cells, Rat brain tissue, Mouse brain tissue
Species Specificity: human, mouse, rat	IHC : human prostate cancer tissue,
Cited Species: human	IF/ICC : Caco-2 cells,
Note-IHC: suggested antigen retrieval with TE buffer pH 9.0; (*) Alternatively, antigen retrieval may be performed with citrate buffer pH 6.0	

Background Information

Estrogen related receptor beta (ESRRB), a NR3 Steroid Receptor, has been shown to affect early placental development. Also it can act as a repressor of transcriptional activity mediated by the glucocorticoid receptor (GR). It binds as a monomer to the extended half-site TNAAGTGCA and as a homodimer to the estrogen response element (ERE), palindromic thyroid hormone response element (TRE(pal)), and SF-1 response element, but not to the glucocorticoid response element (GRE). Estrogen related receptor beta mutations lead to abnormal development of the chorion and defective diploid trophoblast proliferation, and are lethal during midgestation. Expression has been documented in mice in the extra embryonic ectoderm that gives rise to the chorion. ESTs have been isolated from normal human eye, lung, and testis libraries. The ligand for the receptor is PPARGgamma coactivator 1 (PGC-1) beta. ESRRB exists various isoforms and molecular weight of each isoform is 48 kDa, 55 kDa and 56 kDa.

Notable Publications

Author	Pubmed ID	Journal	Application
Bo Wang	34749018	Stem Cell Res	IF

Storage

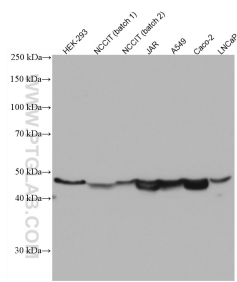
Storage:
Store at -20°C. Stable for one year after shipment.
Storage Buffer:
PBS with 0.02% sodium azide and 50% glycerol pH 7.3.
Aliquoting is unnecessary for -20°C storage

*** 20ul sizes contain 0.1% BSA

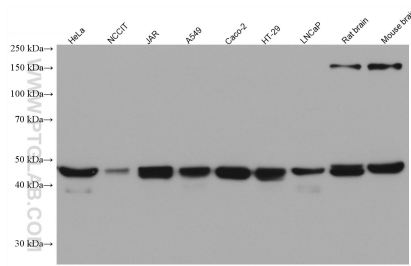
For technical support and original validation data for this product please contact:
T: 1 (888) 4PTGLAB (1-888-478-4522) (toll free in USA), or 1(312) 455-8498 (outside USA)
E: proteintech@ptglab.com
W: ptglab.com

This product is exclusively available under Proteintech Group brand and is not available to purchase from any other manufacturer.

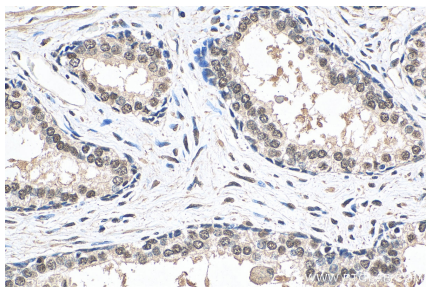
Selected Validation Data



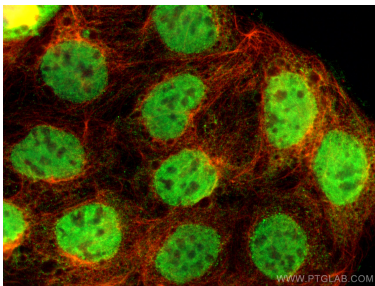
Various lysates were subjected to SDS PAGE followed by western blot with 66818-1-Ig (ESRRB antibody) at dilution of 1:2000 incubated at room temperature for 1.5 hours.



Various lysates were subjected to SDS PAGE followed by western blot with 66818-1-Ig (ESRRB antibody) at dilution of 1:40000 incubated at room temperature for 1.5 hours.



Immunohistochemical analysis of paraffin-embedded human prostate cancer tissue slide using 66818-1-Ig (ESRRB antibody) at dilution of 1:2000 (under 10x lens). Heat mediated antigen retrieval with Tris-EDTA buffer (pH 9.0).



Immunofluorescent analysis of (4% PFA) fixed Caco-2 cells using ESRRB antibody (66818-1-Ig, Clone: 3E10C1) at dilution of 1:800 and CoraLite®488-Conjugated AffiniPure Goat Anti-Mouse IgG(H+L) (SA00013-1), Alpha Tubulin antibody (80762-1-RR, Clone: 1G7, red).